

aaron



Retail Price List
January 2025

BESPOKE



Create a workspace that reflects your company's unique style with our bespoke office furniture, crafted in the UK. We design and manufacture custom furniture solutions that blend functionality, aesthetics, and comfort to meet the specific needs of your business. Whether you require executive desks, collaborative workstations, or tailored reception areas, each piece is carefully designed to maximize space and efficiency.

Our bespoke office furniture is available in a wide range of materials, finishes, and configurations, ensuring every item fits seamlessly into your office environment. From ergonomic designs that prioritize employee well-being to statement pieces that leave a lasting impression on clients, we deliver tailored solutions that elevate your workspace.

Made with high-quality craftsmanship and attention to detail, our UK-made furniture is built to last, offering durability and style. Whether you're renovating or starting fresh, trust us to create furniture that reflects your brand and enhances your office's productivity and appeal."



CONTENTS

RECEPTIONS	5	STORAGE WALL AND TEACHER WALL	55
Hoop Reception NEW	6	Teacher Media Wall	56
800 Reception	9	Freestanding Tray Units	60
650 Reception	13	Storage Trays	62
Glass Shelves for Receptions	15	STORAGE SOLUTIONS	64
BENCH DESKING	16	Zone Metal Shelving	65
Team Back to Back Bench Desking NEW	17	Filing	68
Telescopic Back to Back Bench Desking	20	Cupboards & Bookcases	72
120 Degree Telesales Desks	22	Planter Boxes	74
Single Row Desks with Goal Post Legs	23	Lockers	75
Radial Desks with Goal Post Legs	25	TABLES	79
Accessories for Bench Desking	26	Classic Tables	80
CLASSIC DESKING	28	Atlas Tables	83
Greet Desks with Floating Tops	29	Capri Tables	85
Panel End Desks	30	Splinta Tables - Oak Legs	86
Cantilever Desks	32	Splinta Tables - Steel Legs	90
Tops only	34	Splinta Sit	93
Desk Screens	36	Flip Top Tables	96
Desk Accessories	44	Pillar Tables & Stools	98
Power Modules	45	Picnic Tables	103
HEIGHT ADJUSTABLE DESKING	47	RESIDENTIAL FURNITURE	105
Acclaim Height Adjustable Desks	48	Wardrobes	106
Aspire Height Adjustable Desks	49	Chest of Drawers	106
Aspire Height Adjustable eBench	50	Storage	107
Aspire Screens for eBench	51	Terms and Conditions	110

- SPECIFICATIONS**
- * All furniture is supplied with 25mm MFC tops
 - * All furniture finished with 2mm ABS edging
 - * All storage and wooden pedestals have solid 18mm backs
 - * All Storage shelves are 25mm thick
 - * Storage width and depth dimensions are top sizes (including overhang)
 - * Locks fitted with snap over key fob
 - * Filers and floor standing pedestals fitted with anti-tilt
 - * Heavy duty ball bearing runners on drawers



Our MFC Finishes

Concrete
4298



Natural Nebraska Oak
H3331



Grey Nebraska Oak
H3332



Venetian Walnut
D3811



Maple
D375



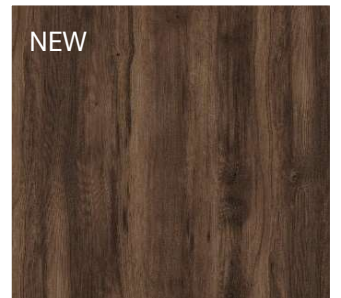
Medium Beech
D381



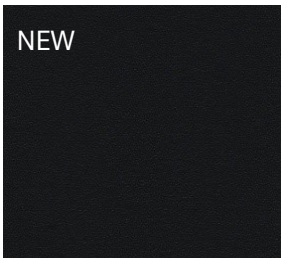
Ferarra Oak
H1334



Ristretto
Baroque Oak
K537



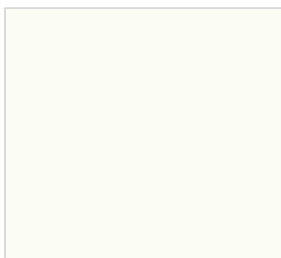
Black
U190



Dark Grey
U171



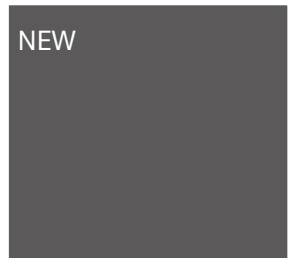
Premium White
W1000



Light Grey
U112



Graphite Grey
U162



New Accent Colours (18mm only)



Rusty Flow
K351



Iron Flow
K352



Charcoal Flow
K353



Fjord Green
U636

STEEL FINISHES



PRODUCT CODE	COLOUR	RETAIL PRICE
RAL5001	Green Blue	£190
RAL6013	Reed Green	£190
RAL6021	Pale Green	£190
RAL9016	Traffice White	£190
RAL9017	Traffice Black	£190
RAL7021	Black Grey	£190
RAL1005	Honey Yellow	£190
RAL3022	Salmon Pink	£190
RAL7030	Stone Grey	£190
RAL7016	Anthracite Grey	£190
RA69006	Silver Grey	£190
RAL-CLEAR	Clear	£190

NEW!

Many of our furniture ranges (please see below) are now available in these new steel RAL colours

There is a surcharge of £190.00 per order, whether that order be for 1 desk or 20 desks.

RANGES

Bench Desking

Aspire Height Adjustable Desking

Atlas Tables

Splinta Steel Tables

Flip Top Tables

Pillar Tables

Picnic Tables

PLEASE NOTE

These images are a digital representation of our finishes and are not exact

RECEPTIONS

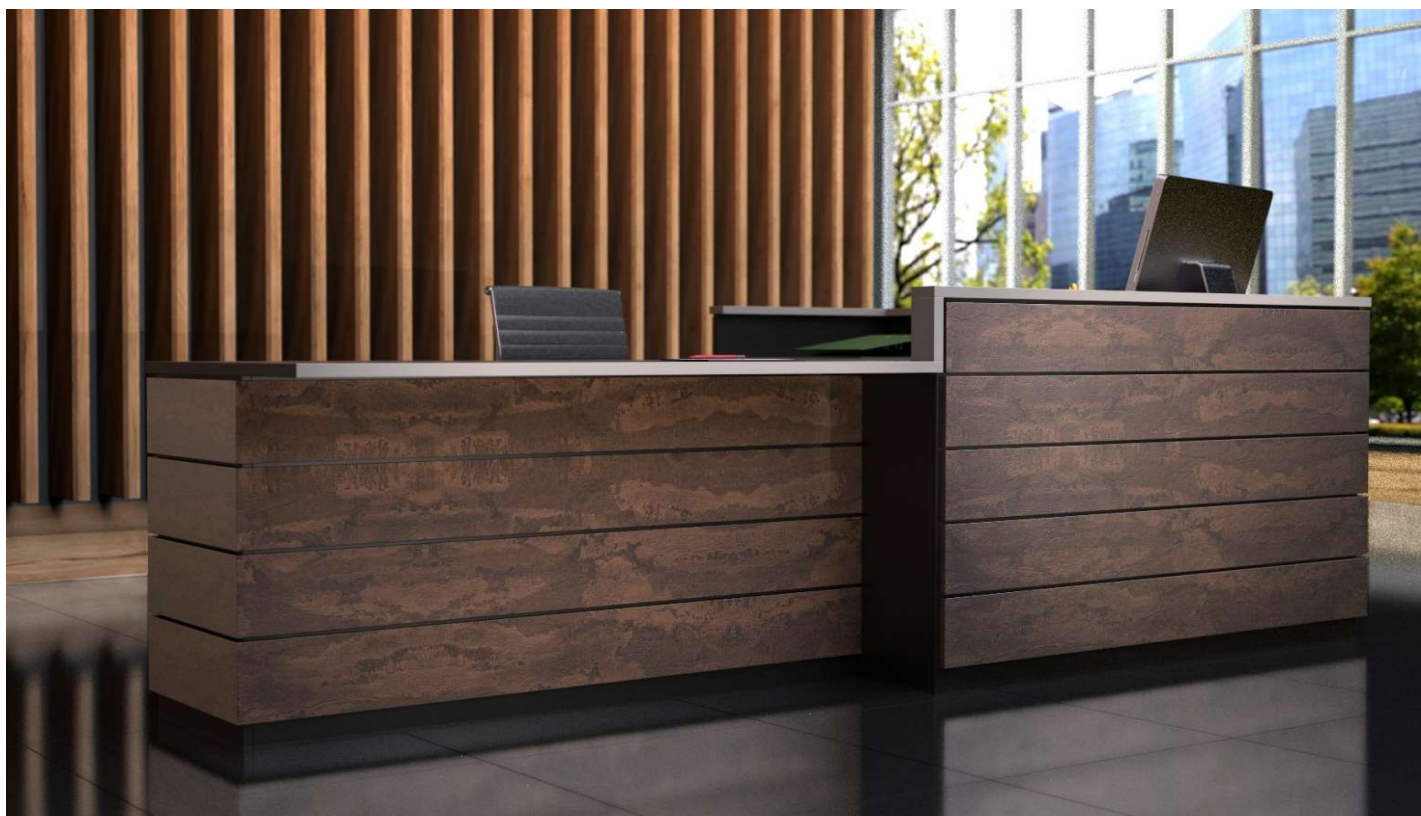


NEW HOOP RECEPTION RANGE

The Hoop reception desk offers a sleek, modern design with practical functionality. This model features clean horizontal lines and a smooth, spacious countertop, contrasted by, textured panels. Ideal for contemporary spaces, Hoop combines style and utility, creating a professional and welcoming atmosphere for any reception area.



Hoop Reception



Hoop Straight Reception

Total W	Counter H	Desk H	Top D	Front panel Sections	Product Code	Retail
1600	905	740	700	1	HOOP-1600	£1,861
2000	905	740	700	3	HOOP-2000	£2,768
2400	905	740	700	3	HOOP-2400	£3,032
2800	905	740	700	3	HOOP-2800	£3,297
3200	905	740	700	3	HOOP-3200	£3,561



Hoop Straight Reception with Central Disabled Access

Total W	D/A W	Counter H	Desk H	Top D	Hand	Product Code	Retail
3000	1000	905	740	700	N/A	HOOP-30/10-DA	£3,340
3400	1000	905	740	700	N/A	HOOP-34/10-DA	£3,503
3800	1000	905	740	700	N/A	HOOP-38/10-DA	£3,910
4200	1000	905	740	700	N/A	HOOP-42/10-DA	£4,072
3200	1200	905	740	700	N/A	HOOP-32/12-DA	£3,408
3600	1200	905	740	700	N/A	HOOP-36/12-DA	£3,571
4000	1200	905	740	700	N/A	HOOP-40/12-DA	£3,978
4400	1200	905	740	700	N/A	HOOP-44/12-DA	£4,140



Hoop Reception

Hoop Straight Reception with Disabled Access

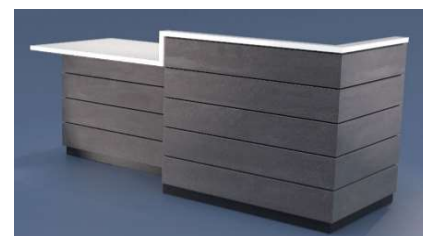
Total W	D/A W	Counter H	Desk H	Top D	Hand	Product Code	Retail
2000	1000	905	740	700	Left	HOOP-20/10-L	£2,384
2200	1000	905	740	700	Left	HOOP-22/10-L	£2,465
2400	1000	905	740	700	Left	HOOP-24/10-L	£2,584
2600	1000	905	740	700	Left	HOOP-26/10-L	£2,670
2000	1000	905	740	700	Right	HOOP-20/10-R	£2,384
2200	1000	905	740	700	Right	HOOP-22/10-R	£2,465
2400	1000	905	740	700	Right	HOOP-24/10-R	£2,584
2600	1000	905	740	700	Right	HOOP-26/10-R	£2,670

Total W	D/A W	Counter H	Desk H	Top D	Hand	Product Code	Retail
2200	1200	905	740	700	Left	HOOP-22/12-L	£2,534
2400	1200	905	740	700	Left	HOOP-24/12-L	£2,615
2600	1200	905	740	700	Left	HOOP-26/12-L	£2,733
2800	1200	905	740	700	Left	HOOP-28/12-L	£2,820
2200	1200	905	740	700	Right	HOOP-22/12-R	£2,534
2400	1200	905	740	700	Right	HOOP-24/12-R	£2,615
2600	1200	905	740	700	Right	HOOP-26/12-R	£2,733
2800	1200	905	740	700	Right	HOOP-28/12-R	£2,820



Left Hand Desk shown

Total W	D/A W	Counter H	Desk H	Top D	Hand	Product Code	Retail
2400	1400	905	740	700	Left	HOOP-24/14-L	£2,683
2600	1400	905	740	700	Left	HOOP-26/14-L	£2,764
2800	1400	905	740	700	Left	HOOP-28/14-L	£2,883
3000	1400	905	740	700	Left	HOOP-30/14-L	£2,969
2400	1400	905	740	700	Right	HOOP-24/14-R	£2,683
2600	1400	905	740	700	Right	HOOP-26/14-R	£2,764
2800	1400	905	740	700	Right	HOOP-28/14-R	£2,883
3000	1400	905	740	700	Right	HOOP-30/14-R	£2,969



Right Hand Desk shown

Total W	D/A W	Counter H	Desk H	Top D	Hand	Product Code	Retail
2600	1600	905	740	700	Left	HOOP-26/16-L	£2,833
2800	1600	905	740	700	Left	HOOP-28/16-L	£2,914
3000	1600	905	740	700	Left	HOOP-30/16-L	£3,033
3200	1600	905	740	700	Left	HOOP-32/16-L	£3,119
2600	1600	905	740	700	Right	HOOP-26/16-R	£2,833
2800	1600	905	740	700	Right	HOOP-28/16-R	£2,914
3000	1600	905	740	700	Right	HOOP-30/16-R	£3,033
3200	1600	905	740	700	Right	HOOP-32/16-R	£3,119

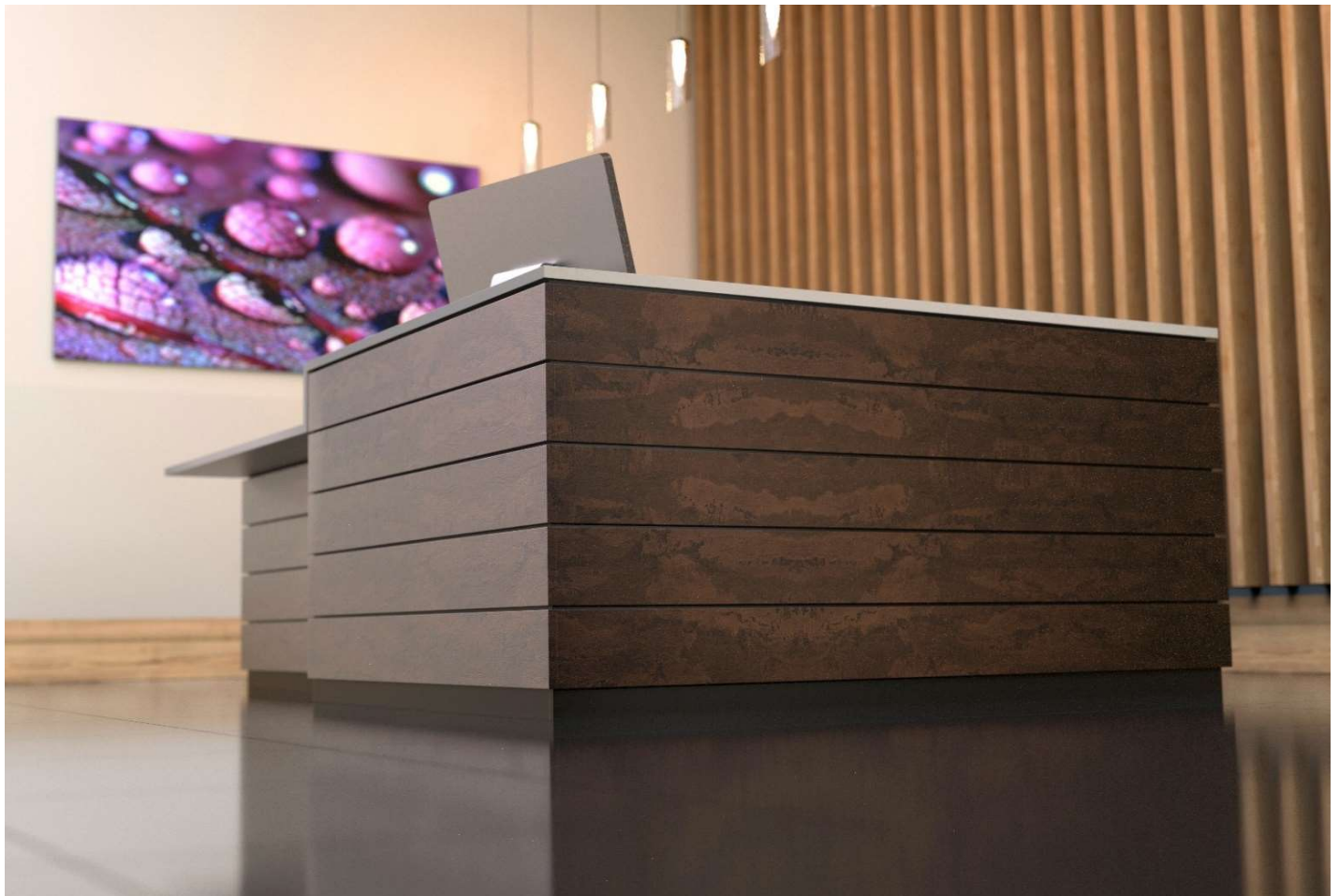
Hoop Reception

Hoop L Shaped Reception with Disabled Access

Front W	Return W	Counter H	Desk H	Top D	Return	Product Code	Retail
2400	1800	905	740	700	Left	HOOP-24/18-LH	£3,878
2600	1800	905	740	700	Left	HOOP-26/18-LH	£3,947
2800	1800	905	740	700	Left	HOOP-28/18-LH	£4,016
2400	1800	905	740	700	Right	HOOP-24/18-RH	£3,878
2600	1800	905	740	700	Right	HOOP-26/18-RH	£3,947
2800	1800	905	740	700	Right	HOOP-28/18-RH	£4,016



Right Hand Return shown



800 Reception



Straight Desks

W	D	H	Cut Back Leg	Product Code	Retail
800	800	740	No Cut Back	R8X8	£417
1000	800	740	No Cut Back	R10X8	£465
1200	800	740	No Cut Back	R12X8	£490
1400	800	740	No Cut Back	R14X8	£533
1600	800	740	No Cut Back	R16X8	£591
1800	800	740	No Cut Back	R18X8	£633
2000	800	740	No Cut Back	R20X8	£677
800	800	740	Left Hand	R8X8-L	£417
1000	800	740	Left Hand	R10X8-L	£465
1200	800	740	Left Hand	R12X8-L	£490
1400	800	740	Left Hand	R14X8-L	£533
1600	800	740	Left Hand	R16X8-L	£591
1800	800	740	Left Hand	R18X8-L	£633
2000	800	740	Left Hand	R20X8-L	£677
800	800	740	Right Hand	R8X8-R	£417
1000	800	740	Right Hand	R10X8-R	£465
1200	800	740	Right Hand	R12X8-R	£490
1400	800	740	Right Hand	R14X8-R	£533
1600	800	740	Right Hand	R16X8-R	£591
1800	800	740	Right Hand	R18X8-R	£633
2000	800	740	Right Hand	R20X8-R	£677



Modesty panel is inset
400mm from the front of the
desk

800 Reception

Straight Desks with Disabled Access

W	D	H	Cut back leg	Product Code	Retail
800	800	740	No Cut Back	R8X8/DA	£417
1000	800	740	No Cut Back	R10X8/DA	£465
1200	800	740	No Cut Back	R12X8/DA	£490
1400	800	740	No Cut Back	R14X8/DA	£533
1600	800	740	No Cut Back	R16X8/DA	£591
1800	800	740	No Cut Back	R18X8/DA	£633
2000	800	740	No Cut Back	R20X8/DA	£677



Modesty panel is inset
400mm from the front of the
desk

800	800	740	Left Hand	R8X8/DA-L	£417
1000	800	740	Left Hand	R10X8/DA-L	£465
1200	800	740	Left Hand	R12X8/DA-L	£490
1400	800	740	Left Hand	R14X8/DA-L	£533
1600	800	740	Left Hand	R16X8/DA-L	£591
1800	800	740	Left Hand	R18X8/DA-L	£633
2000	800	740	Left Hand	R20X8/DA-L	£677

800	800	740	Right Hand	R8X8/DA-R	£417
1000	800	740	Right Hand	R10X8/DA-R	£465
1200	800	740	Right Hand	R12X8/DA-R	£490
1400	800	740	Right Hand	R14X8/DA-R	£533
1600	800	740	Right Hand	R16X8/DA-R	£591
1800	800	740	Right Hand	R18X8/DA-R	£633
2000	800	740	Right Hand	R20X8/DA-R	£677

800 Radius Curved Desk

Angle	D	H	Cut back leg	Product Code	Retail
90°	800	740	Left and Right	800RD/90EC	£877



800 Radius Curved Desk with Disabled Access

Angle	D	H	Cut back leg	Product Code	Retail
90°	800	740	Left and Right	800R/90EC/DA	£877



800 Reception

1200 Radius Curved Desk

Angle	D	H	Cut back leg	Product Code	Retail
-------	---	---	--------------	--------------	--------

Internal Curve

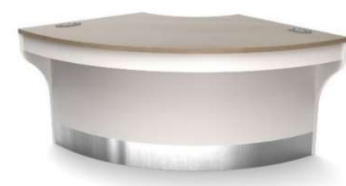
90°	800	740	Left and Right	1200R/90IC	£908
-----	-----	-----	----------------	------------	------



Internal Curve

External Curve

90°	800	740	Left and Right	1200R/90EC	£1,105
-----	-----	-----	----------------	------------	--------



External Curve

1200 Radius Curved Desk with Disabled Access

Angle	D	H	Cut back leg	Product Code	Retail
-------	---	---	--------------	--------------	--------

90°	800	740	Left and Right	1200R90/EC/DA	£1,105
-----	-----	-----	----------------	---------------	--------



1500 Radius Curved Desk

Angle	D	H	Cut back leg	Product Code	Retail
-------	---	---	--------------	--------------	--------

90°	800	740	Left and Right	1500R/90EC	£1,357
-----	-----	-----	----------------	------------	--------



Straight Top Units

W	D	H	Product Code	Retail
800	300	450	RDO800	£230
1000	300	450	RDO1000	£235
1200	300	450	RDO1200	£254
1400	300	450	RDO1400	£261
1600	300	450	RDO1600	£275
1800	300	450	RDO1800	£288
2000	300	450	RDO2000	£301



800 Reception

800 Radius Top Unit

Angle	D	H	Note	Product Code	Retail
90°	300	450	External Curve	800RDO/90EC	£349



1200 Radius Top Unit

Angle	D	H	Note	Product Code	Retail
90°	300	450	External Curve	1200RDO/90EC	£652



1500 Radius Top Unit

Angle	D	H	Note	Product Code	Retail
90°	300	450	External Curve	1500RDO/90EC	£745



Pigeon Hole Units

W	D	H	Product Code	Retail
425	272	425	SPHU-H	£255
425	272	425	SPHU-V	£255



650 Reception



Straight Desks

W	D	H	Cut back Leg	Product Code	Retail
800	650	740	No Cut Back	R8X65	£323
1000	650	740	No Cut Back	R10X65	£385
1200	650	740	No Cut Back	R12X65	£387
1400	650	740	No Cut Back	R14X65	£433
1600	650	740	No Cut Back	R16X65	£457
1800	650	740	No Cut Back	R18X65	£481
2000	650	740	No Cut Back	R20X65	£506
800	650	740	Left Hand	R8X65-L	£323
1000	650	740	Left Hand	R10X65-L	£385
1200	650	740	Left Hand	R12X65-L	£387
1400	650	740	Left Hand	R14X65-L	£433
1600	650	740	Left Hand	R16X65-L	£457
1800	650	740	Left Hand	R18X65-L	£481
2000	650	740	Left Hand	R20X65-L	£506
800	650	740	Right Hand	R8X65-R	£323
1000	650	740	Right Hand	R10X65-R	£385
1200	650	740	Right Hand	R12X65-R	£387
1400	650	740	Right Hand	R14X65-R	£433
1600	650	740	Right Hand	R16X65-R	£457
1800	650	740	Right Hand	R18X65-R	£481
2000	650	740	Right Hand	R20X65-R	£506



650 Reception

1050 Radius Curves

Angle	D	H	Cut back Leg	Product Code	Retail
External Curve					
90°	650	740	No Cut Back	1050R90/EC	£1,114
90°	650	740	Left Hand	1050R90/EC-L	£1,114
90°	650	740	Right Hand	1050R90/EC-R	£1,114
Internal Curve					
90°	650	740	No Cut Back	1050R90/IC	£881
90°	650	740	Left Hand	1050R90/IC-L	£881
90°	650	740	Right Hand	1050R90/IC-R	£881



External Curve



Internal Curve

Straight Top Units

W	D	H	Product Code	Retail
800	300	450	RDO800	£230
1000	300	450	RDO1000	£235
1200	300	450	RDO1200	£254
1400	300	450	RDO1400	£261
1600	300	450	RDO1600	£275
1800	300	450	RDO1800	£288
2000	300	450	RDO2000	£301



1050 Radius Top Unit

Angle	D	H	Product Code	Retail
90°	300	450	1050RDO90/EC	£673



Pigeon Hole Units

W	D	H	Product Code	Retail
425	272	425	SPHU-H (Horizontal)	£255
425	272	425	SPHU-V (Vertical)	£255



Slot size 389W/276D/82H

Glass Shelves for Receptions

Straight Shelves

W	D	H	Product Code	Turrets	Retail
800	250	200	RGS/800	2	£249
1000	250	200	RGS/1000	3	£300
1200	250	200	RGS/1200	3	£308
1400	250	200	RGS/1400	3	£336
1600	250	200	RGS/1600	4	£407
1800	250	200	RGS/1800	4	£436
2000	250	200	RGS/2000	5	£507



Curved Shelves

Angle	D	H	Product Code	Turrets	Retail
800 Radius Curves					
90°	250	200	800RGS/90EC	3	£520
1050 Radius Curves					
90°	250	200	1050RGS/90EC	3	£587
1200 Radius Curves					
90°	250	200	1200RGS/90EC	3	£647
1500 Radius Curve					
90°	250	200	1500RGS/90EC	5	£887



BENCH DESKING with Goal Post Legs

Team Bench

Our new TEAM Bench platform has been designed to use the minimum number of components possible. The system utilises an innovative leg to rail connection to create a stable product whilst providing a cost-effective solution.



Telescopic Bench

Our Telescopic Bench Desking is a stylish solution for the busy modern office. It is extremely flexible where numbers can be increased or decreased with little or no fuss.

Bench is space efficient, cost effective, and it's clean, uncluttered lines are currently in vogue.



To compliment this range, we also offer a large selection of desk screens, including fabric screens with an aluminium extrusion that matches the legs of our Bench system (excluding Raw) and acrylic glazed screens in a choice of colours.

Team Bench Desking - Back to Back



- * Back to Back Bench Desking
- * Unlimited seats using Back to Back 2 seat extension
- * Fixed rails
- * Shared cable trays
- * 25mm Cut Back Tops
- * Screens sold separately

ONLY AVAILABLE IN UNI COLOURS.
See page 19

2 Position Back to Back Bench

W	D	H	Silver Frame	White Frame	Black Frame	Retail
1000	1200	740	TGP2-10/6-GSX	TGP2-10/6-GWX	TGP2-10/6-GBX	£464
1200	1200	740	TGP2-12/6-GSX	TGP2-12/6-GWX	TGP2-12/6-GBX	£510
1385	1200	740	TGP2-13/6-GSX	TGP2-13/6-GWX	TGP2-13/6-GBX	£536
1400	1200	740	TGP2-14/6-GSX	TGP2-14/6-GWX	TGP2-14/6-GBX	£554
1600	1200	740	TGP2-16/6-GSX	TGP2-16/6-GWX	TGP2-16/6-GBX	£623
1800	1200	740	TGP2-18/6-GSX	TGP2-18/6-GWX	TGP2-18/6-GBX	£640
1000	1600	740	TGP2-10/8-GSX	TGP2-10/8-GWX	TGP2-10/8-GBX	£486
1200	1600	740	TGP2-12/8-GSX	TGP2-12/8-GWX	TGP2-12/8-GBX	£536
1385	1600	740	TGP2-13/8-GSX	TGP2-13/8-GWX	TGP2-13/8-GBX	£565
1400	1600	740	TGP2-14/8-GSX	TGP2-14/8-GWX	TGP2-14/8-GBX	£592
1600	1600	740	TGP2-16/8-GSX	TGP2-16/8-GWX	TGP2-16/8-GBX	£667
1800	1600	740	TGP2-18/8-GSX	TGP2-18/8-GWX	TGP2-18/8-GBX	£688

4 Position Back to Back Bench

W	D	H	Silver Frame	White Frame	Black Frame	Retail
2000	1200	740	TGP4-10/6-GSX	TGP4-10/6-GWX	TGP4-10/6-GBX	£847
2400	1200	740	TGP4-12/6-GSX	TGP4-12/6-GWX	TGP4-12/6-GBX	£940
2770	1200	740	TGP4-13/6-GSX	TGP4-13/6-GWX	TGP4-13/6-GBX	£991
2800	1200	740	TGP4-14/6-GSX	TGP4-14/6-GWX	TGP4-14/6-GBX	£1,028
3200	1200	740	TGP4-16/6-GSX	TGP4-16/6-GWX	TGP4-16/6-GBX	£1,166
3600	1200	740	TGP4-18/6-GSX	TGP4-18/6-GWX	TGP4-18/6-GBX	£1,199
2000	1600	740	TGP4-10/8-GSX	TGP4-10/8-GWX	TGP4-10/8-GBX	£888
2400	1600	740	TGP4-12/8-GSX	TGP4-12/8-GWX	TGP4-12/8-GBX	£988
2770	1600	740	TGP4-13/8-GSX	TGP4-13/8-GWX	TGP4-13/8-GBX	£1,046
2800	1600	740	TGP4-14/8-GSX	TGP4-14/8-GWX	TGP4-14/8-GBX	£1,101
3200	1600	740	TGP4-16/8-GSX	TGP4-16/8-GWX	TGP4-16/8-GBX	£1,249
3600	1600	740	TGP4-18/8-GSX	TGP4-18/8-GWX	TGP4-18/8-GBX	£1,292

Team Bench Desking - Back to Back

6 Position Back to Back Bench

W	D	H	Silver Frame	White Frame	Black Frame	Retail
3000	1200	740	TGP6-10/6-GSX	TGP6-10/6-GWX	TGP6-10/6-GBX	£1,231
3600	1200	740	TGP6-12/6-GSX	TGP6-12/6-GWX	TGP6-12/6-GBX	£1,369
4155	1200	740	TGP6-13/6-GSX	TGP6-13/6-GWX	TGP6-13/6-GBX	£1,446
4200	1200	740	TGP6-14/6-GSX	TGP6-14/6-GWX	TGP6-14/6-GBX	£1,501
4800	1200	740	TGP6-16/6-GSX	TGP6-16/6-GWX	TGP6-16/6-GBX	£1,709
5400	1200	740	TGP6-18/6-GSX	TGP6-18/6-GWX	TGP6-18/6-GBX	£1,758
3000	1600	740	TGP6-10/8-GSX	TGP6-10/8-GWX	TGP6-10/8-GBX	£1,290
3600	1600	740	TGP6-12/8-GSX	TGP6-12/8-GWX	TGP6-12/8-GBX	£1,440
4155	1600	740	TGP6-13/8-GSX	TGP6-13/8-GWX	TGP6-13/8-GBX	£1,527
4200	1600	740	TGP6-14/8-GSX	TGP6-14/8-GWX	TGP6-14/8-GBX	£1,609
4800	1600	740	TGP6-16/8-GSX	TGP6-16/8-GWX	TGP6-16/8-GBX	£1,832
5400	1600	740	TGP6-18/8-GSX	TGP6-18/8-GWX	TGP6-18/8-GBX	£1,896

8 Position Back to Back Bench

W	D	H	Silver Frame	White Frame	Black Frame	Retail
4000	1200	740	TGP8-10/6-GSX	TGP8-10/6-GWX	TGP8-10/6-GBX	£1,614
4800	1200	740	TGP8-12/6-GSX	TGP8-12/6-GWX	TGP8-12/6-GBX	£1,799
5540	1200	740	TGP8-13/6-GSX	TGP8-13/6-GWX	TGP8-13/6-GBX	£1,901
5600	1200	740	TGP8-14/6-GSX	TGP8-14/6-GWX	TGP8-14/6-GBX	£1,975
6400	1200	740	TGP8-16/6-GSX	TGP8-16/6-GWX	TGP8-16/6-GBX	£2,252
7200	1200	740	TGP8-18/6-GSX	TGP8-18/6-GWX	TGP8-18/6-GBX	£2,317
4000	1600	740	TGP8-10/8-GSX	TGP8-10/8-GWX	TGP8-10/8-GBX	£1,692
4800	1600	740	TGP8-12/8-GSX	TGP8-12/8-GWX	TGP8-12/8-GBX	£1,891
5540	1600	740	TGP8-13/8-GSX	TGP8-13/8-GWX	TGP8-13/8-GBX	£2,008
5600	1600	740	TGP8-14/8-GSX	TGP8-14/8-GWX	TGP8-14/8-GBX	£2,117
6400	1600	740	TGP8-16/8-GSX	TGP8-16/8-GWX	TGP8-16/8-GBX	£2,415
7200	1600	740	TGP8-18/8-GSX	TGP8-18/8-GWX	TGP8-18/8-GBX	£2,500

2 Position Extension

W	D	H	Silver Frame	White Frame	Black Frame	Retail
+1000	1200	740	TGP2X-10/6-GSX	TGP2X-10/6-GWX	TGP2X-10/6-GBX	£383
+1200	1200	740	TGP2X-12/6-GSX	TGP2X-12/6-GWX	TGP2X-12/6-GBX	£429
+1385	1200	740	TGP2X-13/6-GSX	TGP2X-13/6-GWX	TGP2X-13/6-GBX	£455
+1400	1200	740	TGP2X-14/6-GSX	TGP2X-14/6-GWX	TGP2X-14/6-GBX	£474
+1600	1200	740	TGP2X-16/6-GSX	TGP2X-16/6-GWX	TGP2X-16/6-GBX	£543
+1800	1200	740	TGP2X-18/6-GSX	TGP2X-18/6-GWX	TGP2X-18/6-GBX	£559
+1000	1600	740	TGP2X-10/8-GSX	TGP2X-10/8-GWX	TGP2X-10/8-GBX	£402
+1200	1600	740	TGP2X-12/8-GSX	TGP2X-12/8-GWX	TGP2X-12/8-GBX	£452
+1385	1600	740	TGP2X-13/8-GSX	TGP2X-13/8-GWX	TGP2X-13/8-GBX	£481
+1400	1600	740	TGP2X-14/8-GSX	TGP2X-14/8-GWX	TGP2X-14/8-GBX	£508
+1600	1600	740	TGP2X-16/8-GSX	TGP2X-16/8-GWX	TGP2X-16/8-GBX	£583
+1800	1600	740	TGP2X-18/8-GSX	TGP2X-18/8-GWX	TGP2X-18/8-GBX	£604

Team Bench Desking - Back to Back



Our new TEAM Bench platform has been designed to use the minimum number of components possible. The system utilises an innovative leg to rail connection to create a stable product whilst providing a cost-effective solution.

Black
U190

Premium White
W1000

Dark Grey
U171

Light Grey
U112

Graphite Grey
U162



Telescopic Bench Desking - Back to Back



- * Back to Back Bench Desking
- * Unlimited seats using Back to Back 2 seat extension
- * Telescopic Beam with cable trough for smaller cable capacity requirements
- * Supplied with Scallops in Tops
- * Tops also available with ports (on request)
- * Additional Leg colour options available (extra cost)
- * Screens sold separately
- * Cable trays sold separately for larger cable capacity requirements

2 Position Back to Back Bench

W	D	H	Silver Frame	White Frame	Black Frame	Retail
1000	1200	740	BC2-10/6-GSX	BC2-10/6-GWX	BC2-10/6-GBX	£646
1200	1200	740	BC2-12/6-GSX	BC2-12/6-GWX	BC2-12/6-GBX	£722
1400	1200	740	BC2-14/6-GSX	BC2-14/6-GWX	BC2-14/6-GBX	£768
1600	1200	740	BC2-16/6-GSX	BC2-16/6-GWX	BC2-16/6-GBX	£788
1800	1200	740	BC2-18/6-GSX	BC2-18/6-GWX	BC2-18/6-GBX	£809
1000	1600	740	BC2-10/8-GSX	BC2-10/8-GWX	BC2-10/8-GBX	£693
1200	1600	740	BC2-12/8-GSX	BC2-12/8-GWX	BC2-12/8-GBX	£775
1400	1600	740	BC2-14/8-GSX	BC2-14/8-GWX	BC2-14/8-GBX	£836
1600	1600	740	BC2-16/8-GSX	BC2-16/8-GWX	BC2-16/8-GBX	£863
1800	1600	740	BC2-18/8-GSX	BC2-18/8-GWX	BC2-18/8-GBX	£890

4 Position Back to Back Bench

W	D	H	Silver Frame	White Frame	Black Frame	Retail
2000	1200	740	BC4-10/6-GSX	BC4-10/6-GWX	BC4-10/6-GBX	£1,121
2400	1200	740	BC4-12/6-GSX	BC4-12/6-GWX	BC4-12/6-GBX	£1,274
2800	1200	740	BC4-14/6-GSX	BC4-14/6-GWX	BC4-14/6-GBX	£1,365
3200	1200	740	BC4-16/6-GSX	BC4-16/6-GWX	BC4-16/6-GBX	£1,406
3600	1200	740	BC4-18/6-GSX	BC4-18/6-GWX	BC4-18/6-GBX	£1,447
2000	1600	740	BC4-10/8-GSX	BC4-10/8-GWX	BC4-10/8-GBX	£1,195
2400	1600	740	BC4-12/8-GSX	BC4-12/8-GWX	BC4-12/8-GBX	£1,359
2800	1600	740	BC4-14/8-GSX	BC4-14/8-GWX	BC4-14/8-GBX	£1,481
3200	1600	740	BC4-16/8-GSX	BC4-16/8-GWX	BC4-16/8-GBX	£1,535
3600	1600	740	BC4-18/8-GSX	BC4-18/8-GWX	BC4-18/8-GBX	£1,589

Telescopic Bench Desking - Back to Back



6 Position Back to Back Bench

W	D	H	Silver Frame	White Frame	Black Frame	Retail
3000	1200	740	BC6-10/6-GSX	BC6-10/6-GWX	BC6-10/6-GBX	£1,596
3600	1200	740	BC6-12/6-GSX	BC6-12/6-GWX	BC6-12/6-GBX	£1,825
4200	1200	740	BC6-14/6-GSX	BC6-14/6-GWX	BC6-14/6-GBX	£1,963
4800	1200	740	BC6-16/6-GSX	BC6-16/6-GWX	BC6-16/6-GBX	£2,024
5400	1200	740	BC6-18/6-GSX	BC6-18/6-GWX	BC6-18/6-GBX	£2,084
3000	1600	740	BC6-10/8-GSX	BC6-10/8-GWX	BC6-10/8-GBX	£1,697
3600	1600	740	BC6-12/8-GSX	BC6-12/8-GWX	BC6-12/8-GBX	£1,942
4200	1600	740	BC6-14/8-GSX	BC6-14/8-GWX	BC6-14/8-GBX	£2,126
4800	1600	740	BC6-16/8-GSX	BC6-16/8-GWX	BC6-16/8-GBX	£2,207
5400	1600	740	BC6-18/8-GSX	BC6-18/8-GWX	BC6-18/8-GBX	£2,288

8 Position Back to Back Bench

W	D	H	Silver Frame	White Frame	Black Frame	Retail
4000	1200	740	BC8-10/6-GSX	BC8-10/6-GWX	BC8-10/6-GBX	£2,072
4800	1200	740	BC8-12/6-GSX	BC8-12/6-GWX	BC8-12/6-GBX	£2,377
5600	1200	740	BC8-14/6-GSX	BC8-14/6-GWX	BC8-14/6-GBX	£2,560
6400	1200	740	BC8-16/6-GSX	BC8-16/6-GWX	BC8-16/6-GBX	£2,641
7200	1200	740	BC8-18/6-GSX	BC8-18/6-GWX	BC8-18/6-GBX	£2,722
4000	1600	740	BC8-10/8-GSX	BC8-10/8-GWX	BC8-10/8-GBX	£2,199
4800	1600	740	BC8-12/8-GSX	BC8-12/8-GWX	BC8-12/8-GBX	£2,526
5600	1600	740	BC8-14/8-GSX	BC8-14/8-GWX	BC8-14/8-GBX	£2,770
6400	1600	740	BC8-16/8-GSX	BC8-16/8-GWX	BC8-16/8-GBX	£2,878
7200	1600	740	BC8-18/8-GSX	BC8-18/8-GWX	BC8-18/8-GBX	£2,986

2 Position Extension

W	D	H	Silver Frame	White Frame	Black Frame	Retail
+1000	1200	740	BC2X-10/6-GSX	BC2X-10/6-GWX	BC2X-10/6-GBX	£475
+1200	1200	740	BC2X-12/6-GSX	BC2X-12/6-GWX	BC2X-12/6-GBX	£552
+1400	1200	740	BC2X-14/6-GSX	BC2X-14/6-GWX	BC2X-14/6-GBX	£597
+1600	1200	740	BC2X-16/6-GSX	BC2X-16/6-GWX	BC2X-16/6-GBX	£618
+1800	1200	740	BC2X-18/6-GSX	BC2X-18/6-GWX	BC2X-18/6-GBX	£638
+1000	1600	740	BC2X-10/8-GSX	BC2X-10/8-GWX	BC2X-10/8-GBX	£502
+1200	1600	740	BC2X-12/8-GSX	BC2X-12/8-GWX	BC2X-12/8-GBX	£584
+1400	1600	740	BC2X-14/8-GSX	BC2X-14/8-GWX	BC2X-14/8-GBX	£645
+1600	1600	740	BC2X-16/8-GSX	BC2X-16/8-GWX	BC2X-16/8-GBX	£672
+1800	1600	740	BC2X-18/8-GSX	BC2X-18/8-GWX	BC2X-18/8-GBX	£699

Telescopic Telesales Bench Desking



Screens sold separately

120 Degree Telesales Desks

W	D	H	Silver Frame	White Frame	Black Frame	Retail
1200/1200	600/600	740	BCTS-120/6-GSX	BCTS-120/6-GWX	BCTS-120/6-GBX	£1,959
1200/1200	800/800	740	BCTS-120/8-GSX	BCTS-120/8-GWX	BCTS-120/8-GBX	£2,254

NEW RAL COLOURS AVAILABLE SEE PAGE 3 FOR DETAILS AND PRICES



Telescopic Bench Desking - Single Row



- * Side by Side inline Bench Desking
- * Unlimited seats using single seat extension
- * Telescopic Beam with cable trough for smaller cable capacity requirements
- * Supplied with Scallops in Tops
- * Tops also available with ports (on request)
- * Additional Leg colour options available (extra cost)
- * Screens sold separately
- * Cable trays sold separately for larger cable capacity requirements

Single Position

W	D	H	Silver Frame	White Frame	Black Frame	Retail
1000	600	740	BS1-10/6-GSX	BS1-10/6-GWX	BS1-10/6-GBX	£356
1200	600	740	BS1-12/6-GSX	BS1-12/6-GWX	BS1-12/6-GBX	£395
1400	600	740	BS1-14/6-GSX	BS1-14/6-GWX	BS1-14/6-GBX	£420
1600	600	740	BS1-16/6-GSX	BS1-16/6-GWX	BS1-16/6-GBX	£431
1800	600	740	BS1-18/6-GSX	BS1-18/6-GWX	BS1-18/6-GBX	£442
1000	800	740	BS1-10/8-GSX	BS1-10/8-GWX	BS1-10/8-GBX	£409
1200	800	740	BS1-12/8-GSX	BS1-12/8-GWX	BS1-12/8-GBX	£451
1400	800	740	BS1-14/8-GSX	BS1-14/8-GWX	BS1-14/8-GBX	£469
1600	800	740	BS1-16/8-GSX	BS1-16/8-GWX	BS1-16/8-GBX	£484
1800	800	740	BS1-18/8-GSX	BS1-18/8-GWX	BS1-18/8-GBX	£498

2 Position Side by Side

W	D	H	Silver Frame	White Frame	Black Frame	Retail
2000	600	740	BS2-10/6-GSX	BS2-10/6-GWX	BS2-10/6-GBX	£628
2400	600	740	BS2-12/6-GSX	BS2-12/6-GWX	BS2-12/6-GBX	£705
2800	600	740	BS2-14/6-GSX	BS2-14/6-GWX	BS2-14/6-GBX	£755
3200	600	740	BS2-16/6-GSX	BS2-16/6-GWX	BS2-16/6-GBX	£777
3600	600	740	BS2-18/6-GSX	BS2-18/6-GWX	BS2-18/6-GBX	£799
2000	800	740	BS2-10/8-GSX	BS2-10/8-GWX	BS2-10/8-GBX	£750
2400	800	740	BS2-12/8-GSX	BS2-12/8-GWX	BS2-12/8-GBX	£797
2800	800	740	BS2-14/8-GSX	BS2-14/8-GWX	BS2-14/8-GBX	£825
3200	800	740	BS2-16/8-GSX	BS2-16/8-GWX	BS2-16/8-GBX	£853
3600	800	740	BS2-18/8-GSX	BS2-18/8-GWX	BS2-18/8-GBX	£894

Telescopic Bench Desking - Single Row



3 Position Side by Side

W	D	H	Silver Frame	White Frame	Black Frame	Retail
3000	600	740	BS3-10/6-GSX	BS3-10/6-GWX	BS3-10/6-GBX	£899
3600	600	740	BS3-12/6-GSX	BS3-12/6-GWX	BS3-12/6-GBX	£1,015
4200	600	740	BS3-14/6-GSX	BS3-14/6-GWX	BS3-14/6-GBX	£1,090
4800	600	740	BS3-16/6-GSX	BS3-16/6-GWX	BS3-16/6-GBX	£1,123
5400	600	740	BS3-18/6-GSX	BS3-18/6-GWX	BS3-18/6-GBX	£1,156
3000	800	740	BS3-10/8-GSX	BS3-10/8-GWX	BS3-10/8-GBX	£1,090
3600	800	740	BS3-12/8-GSX	BS3-12/8-GWX	BS3-12/8-GBX	£1,142
4200	800	740	BS3-14/8-GSX	BS3-14/8-GWX	BS3-14/8-GBX	£1,181
4800	800	740	BS3-16/8-GSX	BS3-16/8-GWX	BS3-16/8-GBX	£1,223
5400	800	740	BS3-18/8-GSX	BS3-18/8-GWX	BS3-18/8-GBX	£1,289

4 Position Side by Side

W	D	H	Silver Frame	White Frame	Black Frame	Retail
4000	600	740	BS4-10/6-GSX	BS4-10/6-GWX	BS4-10/6-GBX	£1,170
4800	600	740	BS4-12/6-GSX	BS4-12/6-GWX	BS4-12/6-GBX	£1,325
5600	600	740	BS4-14/6-GSX	BS4-14/6-GWX	BS4-14/6-GBX	£1,425
6400	600	740	BS4-16/6-GSX	BS4-16/6-GWX	BS4-16/6-GBX	£1,469
7200	600	740	BS4-18/6-GSX	BS4-18/6-GWX	BS4-18/6-GBX	£1,513
4000	800	740	BS4-10/8-GSX	BS4-10/8-GWX	BS4-10/8-GBX	£1,431
4800	800	740	BS4-12/8-GSX	BS4-12/8-GWX	BS4-12/8-GBX	£1,488
5600	800	740	BS4-14/8-GSX	BS4-14/8-GWX	BS4-14/8-GBX	£1,537
6400	800	740	BS4-16/8-GSX	BS4-16/8-GWX	BS4-16/8-GBX	£1,593
7200	800	740	BS4-18/8-GSX	BS4-18/8-GWX	BS4-18/8-GBX	£1,685

1 Position Extension

W	D	H	Silver Frame	White Frame	Black Frame	Retail
+1000	600	740	BS1X-10/6-GSX	BS1X-10/6-GWX	BS1X-10/6-GBX	£271
+1200	600	740	BS1X-12/6-GSX	BS1X-12/6-GWX	BS1X-12/6-GBX	£310
+1400	600	740	BS1X-14/6-GSX	BS1X-14/6-GWX	BS1X-14/6-GBX	£335
+1600	600	740	BS1X-16/6-GSX	BS1X-16/6-GWX	BS1X-16/6-GBX	£346
+1800	600	740	BS1X-18/6-GSX	BS1X-18/6-GWX	BS1X-18/6-GBX	£357
+1000	800	740	BS1X-10/8-GSX	BS1X-10/8-GWX	BS1X-10/8-GBX	£340
+1200	800	740	BS1X-12/8-GSX	BS1X-12/8-GWX	BS1X-12/8-GBX	£346
+1400	800	740	BS1X-14/8-GSX	BS1X-14/8-GWX	BS1X-14/8-GBX	£356
+1600	800	740	BS1X-16/8-GSX	BS1X-16/8-GWX	BS1X-16/8-GBX	£370
+1800	800	740	BS1X-18/8-GSX	BS1X-18/8-GWX	BS1X-18/8-GBX	£396

Telescopic Radial Desking



Curved Desk
Left Hand



Crescent Desk
Left Hand

Goal Post - Radial Desks

Curved Desks

W	D	H	Silver Frame	White Frame	Black Frame	Retail
RIGHT HAND						
1600/1200	800/600	740	BC1-C16/12-GSX/R	BC1-C16/12-GWX/R	BC1-C16/12-GBX/R	£770
1800/1200	800/600	740	BC1-C18/12-GSX/R	BC1-C18/12-GWX/R	BC1-C18/12-GBX/R	£790
1600/1600	800/600	740	BC1-C16/16-GSX/R	BC1-C16/16-GWX/R	BC1-C16/16-GBX/R	£824
1800/1800	800/600	740	BC1-C18/18-GSX/R	BC1-C18/18-GWX/R	BC1-C18/18-GBX/R	£883
LEFT HAND						
1600/1200	800/600	740	BC1-C16/12-GSX/L	BC1-C16/12-GWX/L	BC1-C16/12-GBX/L	£770
1800/1200	800/600	740	BC1-C18/12-GSX/L	BC1-C18/12-GWX/L	BC1-C18/12-GBX/L	£790
1600/1600	800/600	740	BC1-C16/16-GSX/L	BC1-C16/16-GWX/L	BC1-C16/16-GBX/L	£824
1800/1800	800/600	740	BC1-C18/18-GSX/L	BC1-C18/18-GWX/L	BC1-C18/18-GBX/L	£883

Crescent Desks

W	D	H	Silver Frame	White Frame	Black Frame	Retail
RIGHT HAND						
1600/1200	800/600	740	BC1-CR16/12-GSX/R	BC1-CR16/12-GWX/R	BC1-CR16/12-GBX/R	£770
1800/1200	800/600	740	BC1-CR18/12-GSX/R	BC1-CR18/12-GWX/R	BC1-CR18/12-GBX/R	£790
1600/1600	800/600	740	BC1-CR16/16-GSX/R	BC1-CR16/16-GWX/R	BC1-CR16/16-GBX/R	£824
1800/1800	800/600	740	BC1-CR18/18-GSX/R	BC1-CR18/18-GWX/R	BC1-CR18/18-GBX/R	£883
LEFT HAND						
1600/1200	800/600	740	BC1-CR16/12-GSX/L	BC1-CR16/12-GWX/L	BC1-CR16/12-GBX/L	£770
1800/1200	800/600	740	BC1-CR18/12-GSX/L	BC1-CR18/12-GWX/L	BC1-CR18/12-GBX/L	£790
1600/1600	800/600	740	BC1-CR16/16-GSX/L	BC1-CR16/16-GWX/L	BC1-CR16/16-GBX/L	£824
1800/1800	800/600	740	BC1-CR18/18-GSX/L	BC1-CR18/18-GWX/L	BC1-CR18/18-GBX/L	£883

NEW RAL COLOURS AVAILABLE
SEE PAGE 3 FOR FULL COLOUR RANGE AND PRICES



Accessories for Bench

Sliding Tops

Back to Back	Silver	White	Black	Retail
For 2 Seat Desking	SLT-02-BS	SLT-02-BW	SLT-02-BB	£148
For 4 Seat Desking	SLT-04-BS	SLT-04-BW	SLT-04-BB	£298
For 6 Seat Desking	SLT-06-BS	SLT-06-BW	SLT-06-BB	£447
For 8 Seat Desking	SLT-08-BS	SLT-08-BW	SLT-08-BB	£597
For 10 Seat Desking	SLT-10-BS	SLT-10-BW	SLT-10-BB	£746

Single Row	Silver	White	Black	Retail
For 1 Seat Desking	SLT-01-SS	SLT-01-SW	SLT-01-SB	£74
For 2 Seat Desking	SLT-02-SS	SLT-02-SW	SLT-02-SB	£149
For 3 Seat Desking	SLT-03-SS	SLT-03-SW	SLT-03-SB	£224
For 4 Seat Desking	SLT-04-SS	SLT-04-SW	SLT-04-SB	£298
For 5 Seat Desking	SLT-05-SS	SLT-05-SW	SLT-05-SB	£373
For 6 Seat Desking	SLT-06-SS	SLT-06-SW	SLT-06-SB	£448



Cable Management

Back to Back	Silver	White	Black	Retail
For 1000mm Top	B8-1000-CCD-S	B8-1000-CCD-W	B8-1000-CCD-B	£77
For 1200mm Top	B8-1200-CCD-S	B8-1200-CCD-W	B8-1200-CCD-B	£99
For 1400mm Top	B8-1400-CCD-S	B8-1400-CCD-W	B8-1400-CCD-B	£100
For 1600mm Top	B8-1600-CCD-S	B8-1600-CCD-W	B8-1600-CCD-B	£102
For 1800mm Top	B8-1800-CCD-S	B8-1800-CCD-W	B8-1800-CCD-B	£106

Cable trays supplied with fixing kit



Single Row	Silver	White	Black	Retail
For 1000mm Top	B8-1000-STCT-S	B8-1000-STCT-W	B8-1000-STCT-B	£47
For 1200mm Top	B8-1200-STCT-S	B8-1200-STCT-W	B8-1200-STCT-B	£55
For 1400mm Top	B8-1400-STCT-S	B8-1400-STCT-W	B8-1400-STCT-B	£62
For 1600mm Top	B8-1600-STCT-S	B8-1600-STCT-W	B8-1600-STCT-B	£67
For 1800mm Top	B8-1800-STCT-S	B8-1800-STCT-W	B8-1800-STCT-B	£98

Cable trays supplied with fixing kit



Cable Risers

Details	Silver	White	Black	Retail
Intermeidate Leg Cable Riser	B8-MASS-S	B8-MASS-W	B8-MASS-B	£117
Magnetic leg cable riser	B8-MCR-S	B8-MCR-W	B8-MCR-B	£29



Accessories for Bench

CPU Holder

Details	Silver	White	Black	Retail
CPU Holder	CHF-2208-SV	CHF-2208-WH	CHF-2208-BK	£129



Modesty Panels

Description	W	H	Product Code	Retail
For W1000 Desk	800	400	BC-MOD-10	£125
For W1200 Desk	1000	400	BC-MOD-12	£132
For W1400 Desk	1200	400	BC-MOD-14	£151
For W1600 Desk	1400	400	BC-MOD-16	£159
For W1800 Desk	1600	400	BC-MOD-18	£167



Modesty Panels supplied with brackets



The newest addition to our extensive Bench Desking range is the excellent new Electric height adjustable insert kit for existing bench desking without the need to replace legs or desk tops.

Utilising the existing frame of the bench desk, the telescopic beam is replaced by the insert kit, allowing height adjustment from 740mm - 1390mm at the touch of a button. Whilst retaining the use of cable trays and screens.

For D600mm and D800mm Tops only.

KD Conversion to Sit Stand Position

Details	Silver Frame	White Frame	Black Frame	Retail
Understructure inc. basic control	BST-1000-S	BST-1000-W	BST-1000-B	£1,311

Control Switches

Details	Product Code	Retail
Memory Switch	SSKD-CS-MEM	£75



NEW RAL COLOURS AVAILABLE
SEE PAGE 3 FOR FULL RANGE AND PRICES



CLASSIC DESKING



Greet Desk

Our panel end desking offers a classical, executive appearance, giving a premium feel within the office environment. We offer a vast range of configurations meeting the demands of a modern busy office environment with single desks, radial workstations and stylish telesales desks.

We also offer an updated version of the panel end desk which has full modesty panels and a floating top bringing the traditional panel end desk into modern times.

Our traditional cantilever range of desking is supported by a fully welded, double upright, silver cantilever leg frame, designed and engineered to offer a robust and durable solution, whilst still offering a stylish flexible appearance which will enhance your office for many years to come.



Cantilever Desk



Panel End Desk with support pedestal

Greet Desk with Floating Top



Straight Desks

W	D	H	Product Code	Retail
1200	800	740	SFT12/8/25P	£369
1400	800	740	SFT14/8/25P	£409
1600	800	740	SFT16/8/25P	£432
1800	800	740	SFT18/8/25P	£455

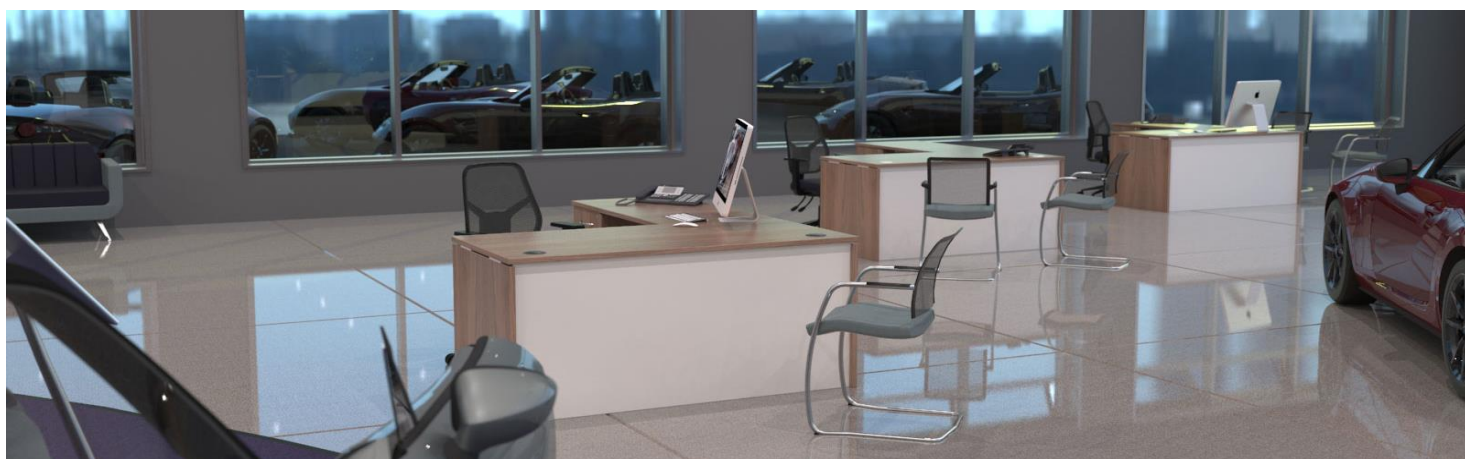


Workstations with Return

W	D	H	Right Hand	Retail
Right Hand				
1600/1200	800/600	740	CFT16/12/25P-R	£587
1800/1200	800/600	740	CFT18/12/25P-R	£615
1600/1600	800/600	740	CFT16/16/25P-R	£656
1800/1800	800/600	740	CFT18/18/25P-R	£728
Left Hand				
1600/1200	800/600	740	CFT16/12/25P-L	£587
1800/1200	800/600	740	CFT18/12/25P-L	£615
1600/1600	800/600	740	CFT16/16/25P-L	£656
1800/1800	800/600	740	CFT18/18/25P-L	£728



Left Hand Desk Shown



Desks with Panel Legs

Rectangle Desks

W	D	H	Product Code	Retail
1200	600	740	NP12/6/25P	£238
1400	600	740	NP14/6/25P	£275
1600	600	740	NP16/6/25P	£292
1800	600	740	NP18/6/25P	£308
1200	800	740	NP12/8/25P	£269
1400	800	740	NP14/8/25P	£312
1600	800	740	NP16/8/25P	£332
1800	800	740	NP18/8/25P	£351



Wave Desks

W	D	H	Product Code	Retail
Left Hand				
1200	1000>800	740	W12/25P-L	£298
1400	1000>800	740	W14/25P-L	£346
1600	1000>800	740	W16/25P-L	£368
1800	1000>800	740	W18/25P-L	£389
Right Hand				
1200	1000>800	740	W12/25P-R	£298
1400	1000>800	740	W14/25P-R	£346
1600	1000>800	740	W16/25P-R	£368
1800	1000>800	740	W18/25P-R	£389



Right Hand shown

Curved Desks

W	D	H	Product Code	Retail
Left Hand				
1600/1200	800/600	740	CWS16/12/25P-L	£480
1800/1200	800/600	740	CWS18/12/25P-L	£506
1600/1600	800/600	740	CWS16/16/25P-L	£572
1800/1800	800/600	740	CWS18/18/25P-L	£619
Right Hand				
1600/1200	800/600	740	CWS16/12/25P-R	£480
1800/1200	800/600	740	CWS18/12/25P-R	£506
1600/1600	800/600	740	CWS16/16/25P-R	£572
1800/1800	800/600	740	CWS18/18/25P-R	£619



Left Hand shown

Desks with Panel Legs

Curved Desks with 3/D Support Pedestal

W	D	H	Product Code	Non Locking	Locking
Left Hand					
1600/1600	800/600	740	CWP16/16/25P-L	£820	£878
1800/1800	800/600	740	CWP18/18/25P-L	£882	£940
Right Hand					
1600/1600	800/600	740	CWP16/16/25P-R	£820	£878
1800/1800	800/600	740	CWP18/18/25P-R	£882	£940

Please add 'NL' to product code for non locking drawers



Left Hand shown

Crescent Desks

W	D	H	Product Code	Retail
Left Hand				
1600/1200	800/600	740	CRWS16/12/25P-L	£480
1800/1200	800/600	740	CRWS18/12/25P-L	£506
1600/1600	800/600	740	CRWS16/16/25P-L	£572
1800/1800	800/600	740	CRWS18/18/25P-L	£619
Right Hand				
1600/1200	800/600	740	CRWS16/12/25P-R	£480
1800/1200	800/600	740	CRWS18/12/25P-R	£506
1600/1600	800/600	740	CRWS16/16/25P-R	£572
1800/1800	800/600	740	CRWS18/18/25P-R	£619



Left Hand shown

Curved Desks with 3/D Support Pedestal

W	D	H	Product Code	Non Locking	Locking
Left Hand					
1600/1600	800/600	740	CRP16/16/25P-L	£820	£878
1800/1800	800/600	740	CRP18/18/25P-L	£882	£940
Right Hand					
1600/1600	800/600	740	CRP16/16/25P-R	£820	£878
1800/1800	800/600	740	CRP18/18/25P-R	£882	£940

Please add 'NL' to product code for non locking drawers



Left Hand shown

Telesales Desks

W	D	H	Product Code	Retail
Left Hand				
1200/1200	600/600	740	TSD12/6/25P-L	£457
1200/1200	800/800	740	TSD12/8/25P-L	£498
Right Hand				
1200/1200	600/600	740	TSD12/6/25P-R	£457
1200/1200	800/800	740	TSD12/8/25P-R	£498



Desks with Cantilever Legs

Rectangle Desks

W	D	H	Product Code	Retail
1200	600	740	NP12/6-S	£299
1400	600	740	NP14/6-S	£336
1600	600	740	NP16/6-S	£353
1800	600	740	NP18/6-S	£369
1200	800	740	NP12/8-S	£319
1400	800	740	NP14/8-S	£364
1600	800	740	NP16/8-S	£383
1800	800	740	NP18/8-S	£403



Please Note: D600mm Desks are not suitable for fixed or under desk pedestals.

Wave Desks

W	D	H	Product Code	Retail
Left Hand				
1200	1000>800	740	W12/S-L	£361
1400	1000>800	740	W14/S-L	£410
1600	1000>800	740	W16/S-L	£432
1800	1000>800	740	W18/S-L	£453
Right Hand				
1200	1000>800	740	W12/S-R	£361
1400	1000>800	740	W14/S-R	£410
1600	1000>800	740	W16/S-R	£432
1800	1000>800	740	W18/S-R	£453



Right Hand Desk Shown

Curved Desks

W	D	H	Product Code	Retail
Left Hand				
1600/1200	800/600	740	CWS16/12/S-L	£533
1800/1200	800/600	740	CWS18/12/S-L	£559
1600/1600	800/600	740	CWS16/16/S-L	£605
1800/1800	800/600	740	CWS18/18/S-L	£673
Right Hand				
1600/1200	800/600	740	CWS16/12/S-R	£533
1800/1200	800/600	740	CWS18/12/S-R	£559
1600/1600	800/600	740	CWS16/16/S-R	£605
1800/1800	800/600	740	CWS18/18/S-R	£673



Left Hand Desk Shown

Desks with Cantilever Legs

Curved Desks with 3/D Pedestal

W	D	H	Product Code	Non Locking	Locking
Left Hand					
1600/1600	800/600	740	CWSP16/16/S-L	£878	£936
1800/1800	800/600	740	CWSP18/18/S-L	£940	£999
Right Hand					
1600/1600	800/600	740	CWSP16/16/S-R	£878	£936
1800/1800	800/600	740	CWSP18/18/S-R	£940	£999

Please add 'NL' to code if non-locking drawers required



Left Hand Desk Shown

Crescent Desks

W	D	H	Product Code	Retail
Left Hand				
1600/1200	800/600	740	CRWS16/12/S-L	£533
1800/1200	800/600	740	CRWS18/12/S-L	£559
1600/1600	800/600	740	CRWS16/16/S-L	£605
1800/1800	800/600	740	CRWS18/18/S-L	£673
Right Hand				
1600/1200	800/600	740	CRWS16/12/S-R	£533
1800/1200	800/600	740	CRWS18/12/S-R	£559
1600/1600	800/600	740	CRWS16/16/S-R	£605
1800/1800	800/600	740	CRWS18/18/S-R	£673



Left Hand Desk Shown

Crescent Desks with 3/D Pedestal

W	D	H	Product Code	Non Locking	Locking
Left Hand					
1600/1600	800/600	740	CRP16/16/S-L	£878	£936
1800/1800	800/600	740	CRP18/18/S-L	£940	£999
Right Hand					
1600/1600	800/600	740	CRP16/16/S-R	£878	£936
1800/1800	800/600	740	CRP18/18/S-R	£940	£999

Please add 'NL' to code if non-locking drawers required



Left Hand Desk Shown

Telesales Desks

W	D	H	Product Code	Retail
Left Hand				
1200/1200	600/600	740	TSD12/6/S-L	£508
1200/1200	800/800	740	TSD12/8/S-L	£534
Right Hand				
1200/1200	600/600	740	TSD12/6/S-R	£508
1200/1200	800/800	740	TSD12/8/S-R	£534



Desk Tops

Rectangle Tops

W	D	With Ports	With Ports	With Scallops	With Scallops
1200	600	RT12/6/25	£119	RT12/6/25-SC	£132
1400	600	RT14/6/25	£146	RT14/6/25-SC	£159
1600	600	RT16/6/25	£158	RT16/6/25-SC	£171
1800	600	RT18/6/25	£170	RT18/6/25-SC	£183
1200	800	RT12/8/25	£158	RT12/8/25-SC	£170
1400	800	RT14/8/25	£174	RT14/8/25-SC	£187
1600	800	RT16/8/25	£190	RT16/8/25-SC	£203
1800	800	RT18/8/25	£206	RT18/8/25-SC	£219



Wave Tops

W	D	With Ports	With Ports	With Scallops	With Scallops
Left Hand					
1200	1000>800	WT12/25-L	£204	WT12/25-SC/L	£216
1400	1000>800	WT14/25-L	£243	WT14/25-SC/L	£256
1600	1000>800	WT16/25-L	£261	WT16/25-SC/L	£273
1800	1000>800	WT18/25-L	£278	WT18/25-SC/L	£291
Right Hand					
1200	1000>800	WT12/25-R	£204	WT12/25-SC/R	£216
1400	1000>800	WT14/25-R	£243	WT14/25-SC/R	£256
1600	1000>800	WT16/25-R	£261	WT16/25-SC/R	£273
1800	1000>800	WT18/25-R	£278	WT18/25-SC/R	£291



Right Hand Shown

Curved Tops

W	D	With Ports	With Ports	With Scallops	With Scallops
Left Hand					
1600/1200	800/600	CT16/12/25-L	£307	CT16/12/25-SC/L	£320
1800/1200	800/600	CT18/12/25-L	£331	CT18/12/25-SC/L	£343
1600/1600	800/600	CT16/16/25-L	£370	CT16/16/25-SC/L	£382
1800/1800	800/600	CT18/18/25-L	£436	CT18/18/25-SC/L	£448
Right Hand					
1600/1200	800/600	CT16/12/25-R	£307	CT16/12/25-SC/R	£320
1800/1200	800/600	CT18/12/25-R	£331	CT18/12/25-SC/R	£343
1600/1600	800/600	CT16/16/25-R	£370	CT16/16/25-SC/R	£382
1800/1800	800/600	CT18/18/25-R	£436	CT18/18/25-SC/R	£448



Right Hand Shown

Desk Tops

Crescent Tops

W	D	With Ports	With Ports	With Scallops	With Scallops
Left Hand					
1600/1200	800/600	CRT16/12/25-L	£307	CRT16/12/25-SC/L	£320
1800/1200	800/600	CRT18/12/25-L	£331	CRT18/12/25-SC/L	£343
1600/1600	800/600	CRT16/16/25-L	£370	CRT16/16/25-SC/L	£382
1800/1800	800/600	CRT18/18/25-L	£436	CRT18/18/25-SC/L	£448
Right Hand					
1600/1200	800/600	CRT16/12/25-R	£307	CRT16/12/25-SC/R	£320
1800/1200	800/600	CRT18/12/25-R	£331	CRT18/12/25-SC/R	£343
1600/1600	800/600	CRT16/16/25-R	£370	CRT16/16/25-SC/R	£382
1800/1800	800/600	CRT18/18/25-R	£436	CRT18/18/25-SC/R	£448



Right Hand Shown

Round Tops

Diameter	Product Code	Retail
600	CT6/25	£161
800	CT8/25	£183
1000	CT10/25	£212
1200	CT12/25	£236
1600	CT16/25	£312



Semi Circular Tops

Diameter	Product Code	Retail
1200	SCT12/25	£213
1400	SCT14/25	£241
1600	SCT16/25	£274



Note: Scallops are 40mm at the deepest point

Desk Screens and Accessories



LOOP & TRIO
Fabric Band A
 Cara

LOOP & TRIO
Fabric Band B
 Lucia
 *L2
 *Racer
 Phoenix
 Era
 *Castillo
 Citadel
 Sonus
 Rivet
 Lucia CS

* Trio only

LOOP & TRIO
Fabric Band C
 Gravity
 Advantage
 Manhattan
 Canopy
 Sprint
 Xtreme
 Chateau
 X2
 Velocity
 Nexus
 Blazier Lite
 Urban
 Synergy 170
 Main Line Plus
 Aspect
 Patina

LOOP & TRIO
Fabric Band D
 24/7 Flax
 *24/7+
 Main Line Flax
 Hi-Tech
 Synergy
 Hemp
 Silk
 Intervene
 (plain & textured)
 Blazier
 Aquarius
 Track
 *Oxygen

* Trio only

ECHO
Fabric Band A
 Cara

ECHO
Fabric Band B
 Lucia
 Era
 Sonus
 Lucia CS
 L2

ECHO
Fabric Band C
 Nexus
 Blazier Lite
 Synergy 170

COSY
 Blazier Lite



Desk Screens



LOOP STRAIGHT

- * 25mm Screen thickness
- * 4mm PVC edging
- * Full upholstered in fire retardent fabric
- * Radius on all 4 corners

Loop Straight with PVC Trim

W	H	Silver Surround	White Surround	Black Surround	Retail
Fabric Band A					
585	380	LOOP-STR-0538-AS	LOOP-STR-0538-AW	LOOP-STR-0538-AB	£163
785	380	LOOP-STR-0738-AS	LOOP-STR-0738-AW	LOOP-STR-0738-AB	£169
800	380	LOOP-STR-0838-AS	LOOP-STR-0838-AW	LOOP-STR-0838-AB	£169
1000	380	LOOP-STR-1038-AS	LOOP-STR-1038-AW	LOOP-STR-1038-AB	£174
1200	380	LOOP-STR-1238-AS	LOOP-STR-1238-AW	LOOP-STR-1238-AB	£182
1400	380	LOOP-STR-1438-AS	LOOP-STR-1438-AW	LOOP-STR-1438-AB	£186
1600	380	LOOP-STR-1638-AS	LOOP-STR-1638-AW	LOOP-STR-1638-AB	£202
1800	380	LOOP-STR-1838-AS	LOOP-STR-1838-AW	LOOP-STR-1838-AB	£207
Fabric Band B					
585	380	LOOP-STR-0538-BS	LOOP-STR-0538-BW	LOOP-STR-0538-BB	£173
785	380	LOOP-STR-0738-BS	LOOP-STR-0738-BW	LOOP-STR-0738-BB	£180
800	380	LOOP-STR-0838-BS	LOOP-STR-0838-BW	LOOP-STR-0838-BB	£180
1000	380	LOOP-STR-1038-BS	LOOP-STR-1038-BW	LOOP-STR-1038-BB	£188
1200	380	LOOP-STR-1238-BS	LOOP-STR-1238-BW	LOOP-STR-1238-BB	£198
1400	380	LOOP-STR-1438-BS	LOOP-STR-1438-BW	LOOP-STR-1438-BB	£205
1600	380	LOOP-STR-1638-BS	LOOP-STR-1638-BW	LOOP-STR-1638-BB	£223
1800	380	LOOP-STR-1838-BS	LOOP-STR-1838-BW	LOOP-STR-1838-BB	£230
Fabric Band C					
585	380	LOOP-STR-0538-CS	LOOP-STR-0538-CW	LOOP-STR-0538-CB	£190
785	380	LOOP-STR-0738-CS	LOOP-STR-0738-CW	LOOP-STR-0738-CB	£202
800	380	LOOP-STR-0838-CS	LOOP-STR-0838-CW	LOOP-STR-0838-CB	£202
1000	380	LOOP-STR-1038-CS	LOOP-STR-1038-CW	LOOP-STR-1038-CB	£215
1200	380	LOOP-STR-1238-CS	LOOP-STR-1238-CW	LOOP-STR-1238-CB	£229
1400	380	LOOP-STR-1438-CS	LOOP-STR-1438-CW	LOOP-STR-1438-CB	£240
1600	380	LOOP-STR-1638-CS	LOOP-STR-1638-CW	LOOP-STR-1638-CB	£263
1800	380	LOOP-STR-1838-CS	LOOP-STR-1838-CW	LOOP-STR-1838-CB	£274
Fabric Band D					
585	380	LOOP-STR-0538-DS	LOOP-STR-0538-DW	LOOP-STR-0538-DB	£226
785	380	LOOP-STR-0738-DS	LOOP-STR-0738-DW	LOOP-STR-0738-DB	£247
800	380	LOOP-STR-0838-DS	LOOP-STR-0838-DW	LOOP-STR-0838-DB	£247
1000	380	LOOP-STR-1038-DS	LOOP-STR-1038-DW	LOOP-STR-1038-DB	£267
1200	380	LOOP-STR-1238-DS	LOOP-STR-1238-DW	LOOP-STR-1238-DB	£291
1400	380	LOOP-STR-1438-DS	LOOP-STR-1438-DW	LOOP-STR-1438-DB	£311
1600	380	LOOP-STR-1638-DS	LOOP-STR-1638-DW	LOOP-STR-1638-DB	£342
1800	380	LOOP-STR-1838-DS	LOOP-STR-1838-DW	LOOP-STR-1838-DB	£362

Desk Screens



ECHO STRAIGHT

- * 25mm Screen thickness
- * Matching fabric trim
- * Full upholstered in fire retardent fabric
- * Radius on all 4 corners

Echo Straight with fabric Trim

W	H	Product Code	Retail
---	---	--------------	--------

Fabric Band B

585	380	ECHO-STR-0538-A	£190
785	380	ECHO-STR-0738-A	£192
800	380	ECHO-STR-0838-A	£192
1000	380	ECHO-STR-1038-A	£199
1200	380	ECHO-STR-1238-A	£209
1400	380	ECHO-STR-1438-A	£215
1600	380	ECHO-STR-1638-A	£232
1800	380	ECHO-STR-1838-A	£233

Fabric Band B

585	380	ECHO-STR-0538-B	£204
785	380	ECHO-STR-0738-B	£206
800	380	ECHO-STR-0838-B	£206
1000	380	ECHO-STR-1038-B	£216
1200	380	ECHO-STR-1238-B	£230
1400	380	ECHO-STR-1438-B	£239
1600	380	ECHO-STR-1638-B	£260
1800	380	ECHO-STR-1838-B	£262

Fabric Band C

585	380	ECHO-STR-0538-C	£231
785	380	ECHO-STR-0738-C	£232
800	380	ECHO-STR-0838-C	£232
1000	380	ECHO-STR-1038-C	£249
1200	380	ECHO-STR-1238-C	£269
1400	380	ECHO-STR-1438-C	£285
1600	380	ECHO-STR-1638-C	£313
1800	380	ECHO-STR-1838-C	£314

Desk Screens



TRIO T1

- * 30mm Screen Thickness
- * Fully upholstered in fire retardant fabric
- * Integral hanging rail
- * Integral linking strips included
- * Aluminium frame on 3 sides

Trio with Hanging Rail

W	H	Silver Surround	White Surround	Black Surround	Retail
Fabric Band A					
785	350	TRIO-T1-0735-AS	TRIO-T1-0735-AW	TRIO-T1-0735-AB	£183
800	380	TRIO-T1-0838-AS	TRIO-T1-0838-AW	TRIO-T1-0838-AB	£184
1000	380	TRIO-T1-1038-AS	TRIO-T1-1038-AW	TRIO-T1-1038-AB	£193
1200	380	TRIO-T1-1238-AS	TRIO-T1-1238-AW	TRIO-T1-1238-AB	£199
1400	380	TRIO-T1-1438-AS	TRIO-T1-1438-AW	TRIO-T1-1438-AB	£206
1600	380	TRIO-T1-1638-AS	TRIO-T1-1638-AW	TRIO-T1-1638-AB	£222
1800	380	TRIO-T1-1838-AS	TRIO-T1-1838-AW	TRIO-T1-1838-AB	£231
Fabric Band B					
785	350	TRIO-T1-0735-BS	TRIO-T1-0735-BW	TRIO-T1-0735-BB	£195
800	380	TRIO-T1-0838-BS	TRIO-T1-0838-BW	TRIO-T1-0838-BB	£196
1000	380	TRIO-T1-1038-BS	TRIO-T1-1038-BW	TRIO-T1-1038-BB	£207
1200	380	TRIO-T1-1238-BS	TRIO-T1-1238-BW	TRIO-T1-1238-BB	£216
1400	380	TRIO-T1-1438-BS	TRIO-T1-1438-BW	TRIO-T1-1438-BB	£225
1600	380	TRIO-T1-1638-BS	TRIO-T1-1638-BW	TRIO-T1-1638-BB	£243
1800	380	TRIO-T1-1838-BS	TRIO-T1-1838-BW	TRIO-T1-1838-BB	£254
Fabric Band C					
785	350	TRIO-T1-0735-CS	TRIO-T1-0735-CW	TRIO-T1-0735-CB	£216
800	380	TRIO-T1-0838-CS	TRIO-T1-0838-CW	TRIO-T1-0838-CB	£218
1000	380	TRIO-T1-1038-CS	TRIO-T1-1038-CW	TRIO-T1-1038-CB	£233
1200	380	TRIO-T1-1238-CS	TRIO-T1-1238-CW	TRIO-T1-1238-CB	£246
1400	380	TRIO-T1-1438-CS	TRIO-T1-1438-CW	TRIO-T1-1438-CB	£260
1600	380	TRIO-T1-1638-CS	TRIO-T1-1638-CW	TRIO-T1-1638-CB	£283
1800	380	TRIO-T1-1838-CS	TRIO-T1-1838-CW	TRIO-T1-1838-CB	£298
Fabric Band D					
785	350	TRIO-T1-0735-DS	TRIO-T1-0735-DW	TRIO-T1-0735-DB	£261
800	380	TRIO-T1-0838-DS	TRIO-T1-0838-DW	TRIO-T1-0838-DB	£262
1000	380	TRIO-T1-1038-DS	TRIO-T1-1038-DW	TRIO-T1-1038-DB	£286
1200	380	TRIO-T1-1238-DS	TRIO-T1-1238-DW	TRIO-T1-1238-DB	£309
1400	380	TRIO-T1-1438-DS	TRIO-T1-1438-DW	TRIO-T1-1438-DB	£331
1600	380	TRIO-T1-1638-DS	TRIO-T1-1638-DW	TRIO-T1-1638-DB	£362
1800	380	TRIO-T1-1838-DS	TRIO-T1-1838-DW	TRIO-T1-1838-DB	£387

Desk Screens



TRIO T2

- * 30mm Screen Thickness
- * Fully upholstered in fire retardant fabric
- * Integral toolbar
- * Integral linking strips included
- * Aluminium frame on 3 sides

Trio Screen with Toolbar

W	H	Silver Surround	White Surround	Black Surround	Retail
Fabric Band A					
785	350	TRIO-T2-0735-AS	TRIO-T2-0735-AW	TRIO-T2-0735-AB	£197
800	380	TRIO-T2-0838-AS	TRIO-T2-0838-AW	TRIO-T2-0838-AB	£197
1000	380	TRIO-T2-1038-AS	TRIO-T2-1038-AW	TRIO-T2-1038-AB	£211
1200	380	TRIO-T2-1238-AS	TRIO-T2-1238-AW	TRIO-T2-1238-AB	£216
1400	380	TRIO-T2-1438-AS	TRIO-T2-1438-AW	TRIO-T2-1438-AB	£231
1600	380	TRIO-T2-1638-AS	TRIO-T2-1638-AW	TRIO-T2-1638-AB	£247
1800	380	TRIO-T2-1838-AS	TRIO-T2-1838-AW	TRIO-T2-1838-AB	£267
Fabric Band B					
785	350	TRIO-T2-0735-BS	TRIO-T2-0735-BW	TRIO-T2-0735-BB	£208
800	380	TRIO-T2-0838-BS	TRIO-T2-0838-BW	TRIO-T2-0838-BB	£208
1000	380	TRIO-T2-1038-BS	TRIO-T2-1038-BW	TRIO-T2-1038-BB	£226
1200	380	TRIO-T2-1238-BS	TRIO-T2-1238-BW	TRIO-T2-1238-BB	£232
1400	380	TRIO-T2-1438-BS	TRIO-T2-1438-BW	TRIO-T2-1438-BB	£250
1600	380	TRIO-T2-1638-BS	TRIO-T2-1638-BW	TRIO-T2-1638-BB	£269
1800	380	TRIO-T2-1838-BS	TRIO-T2-1838-BW	TRIO-T2-1838-BB	£291
Fabric Band C					
785	350	TRIO-T2-0735-CS	TRIO-T2-0735-CW	TRIO-T2-0735-CB	£228
800	380	TRIO-T2-0838-CS	TRIO-T2-0838-CW	TRIO-T2-0838-CB	£230
1000	380	TRIO-T2-1038-CS	TRIO-T2-1038-CW	TRIO-T2-1038-CB	£252
1200	380	TRIO-T2-1238-CS	TRIO-T2-1238-CW	TRIO-T2-1238-CB	£263
1400	380	TRIO-T2-1438-CS	TRIO-T2-1438-CW	TRIO-T2-1438-CB	£285
1600	380	TRIO-T2-1638-CS	TRIO-T2-1638-CW	TRIO-T2-1638-CB	£308
1800	380	TRIO-T2-1838-CS	TRIO-T2-1838-CW	TRIO-T2-1838-CB	£335
Fabric Band D					
785	350	TRIO-T2-0735-DS	TRIO-T2-0735-DW	TRIO-T2-0735-DB	£272
800	380	TRIO-T2-0838-DS	TRIO-T2-0838-DW	TRIO-T2-0838-DB	£274
1000	380	TRIO-T2-1038-DS	TRIO-T2-1038-DW	TRIO-T2-1038-DB	£305
1200	380	TRIO-T2-1238-DS	TRIO-T2-1238-DW	TRIO-T2-1238-DB	£325
1400	380	TRIO-T2-1438-DS	TRIO-T2-1438-DW	TRIO-T2-1438-DB	£356
1600	380	TRIO-T2-1638-DS	TRIO-T2-1638-DW	TRIO-T2-1638-DB	£388
1800	380	TRIO-T2-1838-DS	TRIO-T2-1838-DW	TRIO-T2-1838-DB	£424

Desk Screens



With Hanging Rail



With Toolbar

HALO PERSPEX

- * 30mm Screen Surround
- * Aluminium frame on all 4 sides
- * Hanging Rail and Toolbar options

Halo Perspex Screen

W	H	Silver Surround	White Surround	Black Surround	Retail
With Hanging Rail					
785	350	HALO-T3-0735-S	HALO-T3-0735-W	HALO-T3-0735-B	£216
800	380	HALO-T3-0838-S	HALO-T3-0838-W	HALO-T3-0838-B	£217
1000	380	HALO-T3-1038-S	HALO-T3-1038-W	HALO-T3-1038-B	£228
1200	380	HALO-T3-1238-S	HALO-T3-1238-W	HALO-T3-1238-B	£245
1400	380	HALO-T3-1438-S	HALO-T3-1438-W	HALO-T3-1438-B	£257
1600	380	HALO-T3-1638-S	HALO-T3-1638-W	HALO-T3-1638-B	£269
1800	380	HALO-T3-1838-S	HALO-T3-1838-W	HALO-T3-1838-B	£293
With Toolbar					
785	350	HALO-T4-0735-S	HALO-T4-0735-W	HALO-T4-0735-B	£224
800	380	HALO-T4-0838-S	HALO-T4-0838-W	HALO-T4-0838-B	£225
1000	380	HALO-T4-1038-S	HALO-T4-1038-W	HALO-T4-1038-B	£234
1200	380	HALO-T4-1238-S	HALO-T4-1238-W	HALO-T4-1238-B	£252
1400	380	HALO-T4-1438-S	HALO-T4-1438-W	HALO-T4-1438-B	£274
1600	380	HALO-T4-1638-S	HALO-T4-1638-W	HALO-T4-1638-B	£283
1800	380	HALO-T4-1838-S	HALO-T4-1838-W	HALO-T4-1838-B	£316



COSY

- * 25mm Screen thickness
- * Radius corners
- * Fully upholstered in fire retardant Blazer Fabric.
- * Due to the varied applications, brackets are not included in the Cosy screen price. POA

Cosy

W	H	Fabric	Product Code	Retail
785	350	Blazer Fabric only	COSY-T1-0735-R	£269
800	380	Blazer Fabric only	COSY-T1-0838-R	£269
1000	380	Blazer Fabric only	COSY-T1-1038-R	£271
1200	380	Blazer Fabric only	COSY-T1-1238-R	£274
1400	380	Blazer Fabric only	COSY-T1-1438-R	£283
1600	380	Blazer Fabric only	COSY-T1-1638-R	£307
1800	380	Blazer Fabric only	COSY-T1-1838-R	£395

Desk Screens



LOOP GRIP

- * 25mm Screen thickness
- * PVC Trim
- * Full upholstered in fire retardent fabric
- * Radius on all 4 corners
- * For use on 25mm desk top
- * Simple and fast repositing
- * No brackets required

Loop Grip with PVC Trim

W	H	Silver Surround	White Surround	Black Surround	Retail
Fabric Band A					
700	352	Grip-0600-AS	Grip-0600-AW	Grip-0600-AB	£197
Fabric Band B					
700	352	Grip-0600-BS	Grip-0600-BW	Grip-0600-BB	£219
Fabric Band C					
700	352	Grip-0600-CS	Grip-0600-CW	Grip-0600-CB	£246
Fabric Band D					
700	352	Grip-0600-DS	Grip-0600-DW	Grip-0600-DB	£266



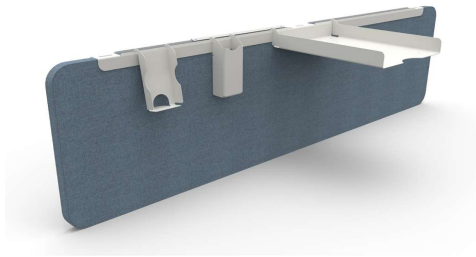
ECHO GRIP

- * 25mm Screen thickness
- * Matching Fabric Trim
- * Full upholstered in fire retardent fabric
- * Radius on all 4 corners
- * For use on 25mm desk top
- * Simple and fast repositing

Echo Grip with Fabric Trim

W	H	Product Code	Product Code	Retail
700	352	Fabric Band A	Grip-0600-A	£233
700	352	Fabric Band B	Grip-0600-B	£253
700	352	Fabric Band C	Grip-0600-C	£292

Desk Screens



Accessories

Details	Silver	White	Black	Retail
Hanging Rails				
800L (600mm)	LOOP-ACR-08-S	LOOP-ACR-08-W	LOOP-ACR-08-B	£27
1000L (800mm)	LOOP-ACR-10-S	LOOP-ACR-10-W	LOOP-ACR-10-B	£30
1200L (1000mm)	LOOP-ACR-12-S	LOOP-ACR-12-W	LOOP-ACR-12-B	£32
1400L (1200mm)	LOOP-ACR-14-S	LOOP-ACR-14-W	LOOP-ACR-14-B	£34
1600L (1400mm)	LOOP-ACR-16-S	LOOP-ACR-16-W	LOOP-ACR-16-B	£44
1800L (1600mm)	LOOP-ACR-18-S	LOOP-ACR-18-W	LOOP-ACR-18-B	£45

Hanging Rail Accessories

A4 Letter Tray	SA-A4LT-S	SA-A4LT-W	SA-A4LT-B	£24
A3 Letter Tray	SA-A3LT-S	SA-A3LT-W	SA-A3LT-B	£31
Pencil Pot	SA-PEPT-S	SA-PEPT-W	SA-PEPT-B	£20
Phone Holder	SA-PHLD-S	SA-PHLD-W	SA-PHLD-B	£19
Name Holder	SA-NHLD-S	SA-NHLD-W	SA-NHLD-B	£18
Trinket Pot	SA-TRPT-S	SA-TRPT-W	SA-TRPT-B	£19

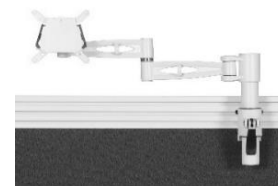
Perspex Colours

		
Chilli Red - S2 4T50	Perfect Plum - S2 8T15	Mandarin Orange - S2 3T17
		
Electric Blue - S2 7T69	Glacier Green - S2 6T21	Polar White - S2 030
		
Aurora Violet - S2 7T58	Lime Zest - S2 6T9A	Citrus Yellow - S2 2T07
		
Slate Grey - S2 9T23		

Accessories

Monitor Arms

Details	Silver	White	Black	Retail
Screen Mounted	PMSA521-S	PMSA521-W	PMSA521-B	£156
Desk Mount - Single	FSA-ORI-M100-S	FSA-ORI-M100-W	FSA-ORI-M100-B	£140
Desk Mount - Double	FSA-ORI-M200-S	FSA-ORI-M200-W	FSA-ORI-M200-B	£209



Vertical Cable Management

Details	Silver	White	Black	Retail
Cable Spine	940-1000	940-1300	940-1200	£48
Mesh Cable Sock	CZP-LRG-S	CZP-LRG-W	CZP-LRG-B	£60



Wire Cable Management Trays

Details	Product Code	Retail
W1000mm for 1200mm Desk	CT-1000	£73
W1200mm for 1400mm Desk	CT-1200	£77
W1400mm for 1600mm Desk	CT-1400	£91
W1600mm for 1800mm Desk	CT-1600	£95



Miscellaneous

Details	Product Code	Retail
Static Pen Tray - Black	PENTRAY	£10
Cable Port - Epiliptical, Silver	CP-E	£9
Cable Port - Circular, Silver or White	CP-C	£9
Extra Cable Port fitted at time of manufacture**	XCP	£50
Set of 4 Tubular Legs - Silver	TLS	£94
Set of 4 Tubular Legs - Chrome	TLC	£98

** FOC if Power Module also supplied



Power Modules

Rotadock In-Desk Power Modules

Rotadock Power Module with 2 individually fused sockets, Dual Smart USB (1x Type A & 1 Type C) with CAT6 and HDMI options. Supplied with 500mm Drop lead and 2m connecting plug cable.



2 Power + Dual Smart USB

Data Lead	White	Silver & Grey	Black	Retail
Not required	ROT2C3-15.80	ROT2C3-11.80	ROT2C3-12.80	£502



2 Power + Dual Smart USB + 2xCAT6

Data Lead	White	Silver & Grey	Black	Retail
2m	ROT2C3-15.B662	ROT2C3-11.B662	ROT2C3-12.B662	£532
3m	ROT2C3-15.B663	ROT2C3-11.B663	ROT2C3-12.B663	£538



2 Power + Dual Smart USB + 2xCAT6 & 1xHDMI

Data Lead	White	Silver & Grey	Black	Retail
2m	ROT2C3-15.66H2	ROT2C3-11.66H2	ROT2C3-12.66H2	£581
3m	ROT2C3-15.66H3	ROT2C3-11.66H3	ROT2C3-12.66H3	£592



Flip up In-Desk Power Modules

Wave Power Module with 2 individually fused sockets, Dual Smart USB (1x Type A & 1 Type C) with 500mm Drop lead and 2m connecting plug cable.



2 Power + Dual Smart USB

Data Lead	White	Silver & Grey	Black	Retail
Not required	W2C3-15.B0	W2C3-11.B0	W2C3-12.B0	£324



2 Power + Dual Smart USB + 2xCAT6

Data Lead	White	Silver & Grey	Black	Retail
2m	W2C3-15.B662	W2C3-11.B662	W2C3-12.B662	£353
3m	W2C3-15.B663	W2C3-11.B663	W2C3-12.B663	£359



2 Power + Dual Smart USB + 2xCAT6 & 1xHDMI

Data Lead	White	Silver & Grey	Black	Retail
2m	W2C3-15.66H2	W2C3-11.66H2	W2C3-12.66H2	£403
3m	W2C3-15.66H3	W2C3-11.66H3	W2C3-12.66H3	£414



Power Modules

Protea Above-Desk Power Modules

Protea Desk Mounted Power Module with 2 individually fused sockets, Dual Smart USB (1x Type A & 1 Type C) with CAT 6 options. Supplied with Desk Clamp, 500mm Drop lead and 2m connecting plug cable.

1 Power + Dual Smart Charge USB

Data Lead	White	Black	Retail
Not required	S2-1C0-15-DC1	S2-1C0-12-DC1	£155



2 Power + Dual Smart USB + 1CAT6

Data Lead	White	Black	Retail
2m	S2-2C2-15.B62-DC1	S2-2C2-12.B62-DC1	£179
3m	S2-2C2-15.B63-DC1	S2-2C2-12.B63-DC1	£183



2 Power + Dual Smart USB + 2 CAT6

Data Lead	White	Black	Retail
2m	S2-2C2-15.62-DC1	S2-2C2-12.62-DC1	£192
3m	S2-2C2-15.63-DC1	S2-2C2-12.63-DC1	£198



80mm Power & Data Grommets

1 Power + Dual Smart Charge, fused, with 2m drop down lead

Plug lead	White	Black	Retail
2m	PP-1C0-10-2M	PP-1C0-13-2M	£147
3m	PP-1C0-10-3M	pp-1C0-13-3M	£150



145mm Pop Up Power & Data Grommets

4Power, 2USB, Wireless Charger 1RJ45 + 1HDMI. With 2m drop down lead and 2m connecting plug cable

Plug lead	White	Black	Retail
2m	PP-107S-4UA2-QHL-2W	PP-107S-4UA2-QHL-2B	£198
3m	PP-107S-4UA2-QHL-3W	PP-107S-4UA2-QHL-3B	£201



Optional Extra Cables & Connectors for Power Modules

	Lead Length	Product Code	Retail
UK 13A to Female - Starter Leads			
	1 Metre	703-1000	£11
	2 Metre	703-2000	£15
	3 Metre	703-3000	£18
	4 Metre	703-4000	£21
	5 Metre	703-5000	£25
Male to Female - Connecting Leads			
	1 Metre	703-1000	£9
	2 Metre	703-2000	£11
	3 Metre	703-3000	£12
	4 Metre	703-4000	£14
	5 Metre	703-5000	£18



HEIGHT ADJUSTABLE DESKING



There was a time when sit-stand desks were a curiosity seldom seen inside a regular office setting . That has now changed, in large part due to reasearch showing that the cumulative impact of sitting down all day for years is associated with a range of health problems, from obesity to cancer.

Sit-stand desks increase focus, alertness and activity levels. These all support each other. When standing it is easier to release restless energy. Combine that with good circulation, stable blood sugar and an active metabolism and it is easier to focus on the task in hand.



ACCLAIM Height Adjustable Desking

Dual Motor - Straight Desks with Advanced Controller

W	D	H	Silver Frame	White Frame	Black Frame	Retail
1000	700	620>1280	EDF/DA-10/6-S	EDF/DA-10/6-W	EDF/DA-10/6-B	£893
1200	700	620>1280	EDF/DA-12/6-S	EDF/DA-12/6-W	EDF/DA-12/6-B	£899
1400	700	620>1280	EDF/DA-14/6-S	EDF/DA-14/6-W	EDF/DA-14/6-B	£914
1600	700	620>1280	EDF/DA-16/6-S	EDF/DA-16/6-W	EDF/DA-16/6-B	£921
1800	700	620>1280	EDF/DA-18/6-S	EDF/DA-18/6-W	EDF/DA-18/6-B	£928
1000	800	620>1280	EDF/DA-10/8-S	EDF/DA-10/8-W	EDF/DA-10/8-B	£900
1200	800	620>1280	EDF/DA-12/8-S	EDF/DA-12/8-W	EDF/DA-12/8-B	£906
1400	800	620>1280	EDF/DA-14/8-S	EDF/DA-14/8-W	EDF/DA-14/8-B	£921
1600	800	620>1280	EDF/DA-16/8-S	EDF/DA-16/8-W	EDF/DA-16/8-B	£928
1800	800	620>1280	EDF/DA-18/8-S	EDF/DA-18/8-W	EDF/DA-18/8-B	£935



Dual Power
Anti Collision
Low Power Consumption
Advanced Controller
Cable Tray
125kg Load
Low Noise
Telescopic Frame
1 Top with 2 Ports

Triple Motor - Radial Desks with Advanced Controller

W	D	H	Silver Frame	White Frame	Black Frame	Retail
Left Hand						
1400/1200	800/600	620>1280	EDF6-14/12/S-L	EDF6-14/12/W-L	EDF6-14/12/B-L	£1,517
1600/1200	800/600	620>1280	EDF6-16/12/S-L	EDF6-16/12/W-L	EDF6-16/12/B-L	£1,531
1800/1200	800/600	620>1280	EDF6-18/12/S-L	EDF6-18/12/W-L	EDF6-18/12/B-L	£1,545
1600/1600	800/600	620>1280	EDF6-16/16/S-L	EDF6-16/16/W-L	EDF6-16/16/B-L	£1,567
Right Hand						
1400/1200	800/600	620>1280	EDF8-14/12/S-R	EDF8-14/12/W-R	EDF8-14/12/B-R	£1,517
1600/1200	800/600	620>1280	EDF8-16/12/S-R	EDF8-16/12/W-R	EDF8-16/12/B-R	£1,531
1800/1200	800/600	620>1280	EDF8-18/12/S-R	EDF8-18/12/W-R	EDF8-18/12/B-R	£1,545
1600/1600	800/600	620>1280	EDF8-16/16/S-R	EDF8-16/16/W-R	EDF8-16/16/B-R	£1,567



Powerful Triple Motor
Anti Collision
Low Power Consumption
Advanced Controller
Cable Tray
150kg Load
Low Noise
Telescopic Frame
Adjustable Angle
1 Top with 3 Ports

Quad Motor - Back to Back Desks with Advanced Controller

W	D	H	Silver Frame	White Frame	Black Frame	Retail
1000	1400	620>1280	EDF2/DA-10/7-S	EDF2/DA-10/7-W	EDF2/DA-10/7-B	£1,761
1200	1400	620>1280	EDF2/DA-12/7-S	EDF2/DA-12/7-W	EDF2/DA-12/7-B	£1,772
1400	1400	620>1280	EDF2/DA-14/7-S	EDF2/DA-14/7-W	EDF2/DA-14/7-B	£1,803
1600	1400	620>1280	EDF2/DA-16/7-S	EDF2/DA-16/7-W	EDF2/DA-16/7-B	£1,817
1800	1400	620>1280	EDF2/DA-18/7-S	EDF2/DA-18/7-W	EDF2/DA-18/7-B	£1,831
1000	1600	620>1280	EDF2/DA-10/8-S	EDF2/DA-10/8-W	EDF2/DA-10/8-B	£1,775
1200	1600	620>1280	EDF2/DA-12/8-S	EDF2/DA-12/8-W	EDF2/DA-12/8-B	£1,786
1400	1600	620>1280	EDF2/DA-14/8-S	EDF2/DA-14/8-W	EDF2/DA-14/8-B	£1,817
1600	1600	620>1280	EDF2/DA-16/8-S	EDF2/DA-16/8-W	EDF2/DA-16/8-B	£1,831
1800	1600	620>1280	EDF2/DA-18/8-S	EDF2/DA-18/8-W	EDF2/DA-18/8-B	£1,845



Powerful Quad Motor
Anti Collision
Low Power Consumption
Advanced Controller
Cable Tray
125kg Load
Low Noise
Telescopic Frame
2 Tops with 2 Ports in each

ASPIRE Height Adjustable Desking

KD Straight Desks

W	D	H	Silver Frame	White Frame	Black Frame	Retail
1000	600	650>1300	EDKD-10/6-S	EDKD-10/6-W	EDKD-10/6-B	£926
1200	600	650>1300	EDKD-12/6-S	EDKD-12/6-W	EDKD-12/6-B	£935
1400	600	650>1300	EDKD-14/6-S	EDKD-14/6-W	EDKD-14/6-B	£964
1600	600	650>1300	EDKD-16/6-S	EDKD-16/6-W	EDKD-16/6-B	£980
1800	600	650>1300	EDKD-18/6-S	EDKD-18/6-W	EDKD-18/6-B	£987
1000	800	650>1300	EDKD-10/8-S	EDKD-10/8-W	EDKD-10/8-B	£935
1200	800	650>1300	EDKD-12/8-S	EDKD-12/8-W	EDKD-12/8-B	£946
1400	800	650>1300	EDKD-14/8-S	EDKD-14/8-W	EDKD-14/8-B	£980
1600	800	650>1300	EDKD-16/8-S	EDKD-16/8-W	EDKD-16/8-B	£998
1800	800	650>1300	EDKD-18/8-S	EDKD-18/8-W	EDKD-18/8-B	£1,007



Supplied with 2 round ports

100kg Load

EV Radial Desks

W	D	H	Silver Frame	White Frame	Black Frame	Retail
Left Hand						
1400/1200	800/600	650>1300	EDCE-14/12/S-L	EDCE-14/12/W-L	EDCE-14/12/B-L	£1,718
1600/1200	800/600	650>1300	EDCE-16/12/S-L	EDCE-16/12/W-L	EDCE-16/12/B-L	£1,740
1800/1200	800/600	650>1300	EDCE-18/12/S-L	EDCE-18/12/W-L	EDCE-18/12/B-L	£1,754
1600/1600	800/600	650>1300	EDCE-16/16/S-L	EDCE-16/16/W-L	EDCE-16/16/B-L	£1,861
Right Hand						
1400/1200	800/600	650>1300	EDCE-14/12/S-R	EDCE-14/12/W-R	EDCE-14/12/B-R	£1,718
1600/1200	800/600	650>1300	EDCE-16/12/S-R	EDCE-16/12/W-R	EDCE-16/12/B-R	£1,740
1800/1200	800/600	650>1300	EDCE-18/12/S-R	EDCE-18/12/W-R	EDCE-18/12/B-R	£1,754
1600/1600	800/600	650>1300	EDCE-16/16/S-R	EDCE-16/16/W-R	EDCE-16/16/B-R	£1,861



Supplied with 3 round ports

100kg Load

Miscellaneous

Details	Product Code	Retail
Memory switch	SSKD-CS-MEM	£75



Our Height Adjustable Desks are supplied with Collision Detection - the built in sensor reacts to any obstruction when raising or lowering the desk, and halts and reverses at point of collision.

Cable trays are included in price.



NEW RAL COLOURS
AVAILABLE
SEE PAGE 4 FOR FULL
COLOUR RANGE
AND PRICES

ASPIRE Electric Height Adjustable eBench Desks



Our ASPIRE Height adjustable 2 position bench desking can be joined by a linking shroud to increase the number of positions.

Supplied as standard with upper cable trays.

100kg load per position.

W	D	H	Seats	Silver Frame	White Frame	Black Frame	Retail
1200	1400	610<1270	2 Seats	BKD2-12/7-S	BKD2-12/7-W	BKD2-12/7-B	£1,998
1400	1400	610<1270	2 Seats	BKD2-14/7-S	BKD2-14/7-W	BKD2-14/7-B	£2,079
1600	1400	610<1270	2 Seats	BKD2-16/7-S	BKD2-16/7-W	BKD2-16/7-B	£2,121
1800	1400	610<1270	2 Seats	BKD2-18/7-S	BKD2-18/7-W	BKD2-18/7-B	£2,144
1200	1600	610<1270	2 Seats	BKD2-12/8-S	BKD2-12/8-W	BKD2-12/8-B	£2,019
1400	1600	610<1270	2 Seats	BKD2-14/8-S	BKD2-14/8-W	BKD2-14/8-B	£2,107
1600	1600	610<1270	2 Seats	BKD2-16/8-S	BKD2-16/8-W	BKD2-16/8-B	£2,156
1800	1600	610<1270	2 Seats	BKD2-18/8-S	BKD2-18/8-W	BKD2-18/8-B	£2,184

Shrouds

Details	Silver	White	Black	Retail
Linking Shroud	SSKD-EL-SHRD-S	SSKD-EL-SHRD-W	SSKD-EL-SHRD-B	£233
Steel End Leg Infill Panel	SSKD-INF-STL-S	SSKD-INF-STL-W	SSKD-INF-STL-B	£116
Steel End Leg with MFC Infill Panel	SSKD-INF-MFC	SSKD-INF-MFC	SSKD-INF-MFC	£158

Optional Extras

Details	Silver	White	Black	Retail
Lower Cable Tray 1200-1400	SSD-LCT-12-14-S	SSD-LCT-12-14-W	SSD-LCT-12-14-B	£158
Lower Cable Tray 1600-1800	SSD-LCT-16-18-S	SSD-LCT-16-18-W	SSD-LCT-16-18-B	£177
Cable Chain - lower cable tray to desktop	SSKD-EBLT-CHAIN-S	SSKD-EBLT-CHAIN-W	SSKD-EBLT-CHAIN-B	£90
Memory Switch			SS-CS-MEM	£75



For full range of RAL colour and prices see page 4

ASPIRE eBench Screens



LOOP

- * 25mm Screen thickness
- * 4mm PVC edging
- * Full upholstered in fire retardant fabric
- * Radius corners
- * 628H - 1153m from floor to top
- * 783H - 1153m from floor to top
- * Loop, Echo and Cosy screens are cut back and are designed to be 200mm shorter than the desk top. If you require it to be full length please order the next size up.

Fabric Band A

W	H	Silver Trim	White Trim	Retail
1200	628	LOOP-EB-1263-AS	LOOP-EB-1263-AW	£253
1400	628	LOOP-EB-1463-AS	LOOP-EB-1463-AW	£253
1600	628	LOOP-EB-1663-AS	LOOP-EB-1663-AW	£274
1800	628	LOOP-EB-1863-AS	LOOP-EB-1863-AW	£399

Fabric Band C

W	H	Silver Trim	White Trim	Retail
1200	628	LOOP-EB-1263-CS	LOOP-EB-1263-CW	£403
1400	628	LOOP-EB-1463-CS	LOOP-EB-1463-CW	£403
1600	628	LOOP-EB-1663-CS	LOOP-EB-1663-CW	£423
1800	628	LOOP-EB-1863-CS	LOOP-EB-1863-CW	£668

1200	783	LOOP-EB-1278-AS	LOOP-EB-1278-AW	£253
1400	783	LOOP-EB-1478-AS	LOOP-EB-1478-AW	£253
1600	783	LOOP-EB-1678-AS	LOOP-EB-1678-AW	£274
1800	783	LOOP-EB-1878-AS	LOOP-EB-1878-AW	£399

1200	783	LOOP-EB-1278-CS	LOOP-EB-1278-CW	£403
1400	783	LOOP-EB-1478-CS	LOOP-EB-1478-CW	£403
1600	783	LOOP-EB-1678-CS	LOOP-EB-1678-CW	£423
1800	783	LOOP-EB-1878-CS	LOOP-EB-1878-CW	£668

Fabric Band B

W	H	Silver Trim	White Trim	Retail
1200	628	LOOP-EB-1263-BS	LOOP-EB-1263-BW	£300
1400	628	LOOP-EB-1463-BS	LOOP-EB-1463-BW	£300
1600	628	LOOP-EB-1663-BS	LOOP-EB-1663-BW	£321
1800	628	LOOP-EB-1863-BS	LOOP-EB-1863-BW	£484

Fabric Band D

W	H	Silver Trim	White Trim	Retail
1200	628	LOOP-EB-1263-DS	LOOP-EB-1263-DW	£455
1400	628	LOOP-EB-1463-DS	LOOP-EB-1463-DW	£455
1600	628	LOOP-EB-1663-DS	LOOP-EB-1663-DW	£476
1800	628	LOOP-EB-1863-DS	LOOP-EB-1863-DW	£763

1200	783	LOOP-EB-1278-BS	LOOP-EB-1278-BW	£300
1400	783	LOOP-EB-1478-BS	LOOP-EB-1478-BW	£300
1600	783	LOOP-EB-1678-BS	LOOP-EB-1678-BW	£321
1800	783	LOOP-EB-1878-BS	LOOP-EB-1878-BW	£484

1200	783	LOOP-EB-1278-DS	LOOP-EB-1278-DW	£455
1400	783	LOOP-EB-1478-DS	LOOP-EB-1478-DW	£455
1600	783	LOOP-EB-1678-DS	LOOP-EB-1678-DW	£476
1800	783	LOOP-EB-1878-AS	LOOP-EB-1878-DW	£763

ASPIRE eBench Screens



ECHO

- * 25mm Screen thickness
- * Matching fabric trim
- * Full upholstered in fire retardent fabric
- * Radius corners
- * Echo screens are cut back and are designed to be 200mm shorter than the desk top. If you require it to be full length please order the next size up.

Fabric Band A

W	H	Fabric Trim	Retail
1200	628	ECHO-EB-1263-A	£329
1400	628	ECHO-EB-1463-A	£338
1600	628	ECHO-EB-1663-A	£369
1800	628	ECHO-EB-1863-A	£451
1200	783	ECHO-EB-1278-A	£329
1400	783	ECHO-EB-1478-A	£338
1600	783	ECHO-EB-1678-A	£369
1800	783	ECHO-EB-1878-A	£451

Fabric Band B

W	H	Fabric Trim	Retail
1200	628	ECHO-EB-1263-B	£398
1400	628	ECHO-EB-1463-B	£413
1600	628	ECHO-EB-1663-B	£449
1800	628	ECHO-EB-1863-B	£544
1200	783	ECHO-EB-1278-B	£398
1400	783	ECHO-EB-1478-B	£413
1600	783	ECHO-EB-1678-B	£449
1800	783	ECHO-EB-1878-B	£544

Fabric Band C

W	H	Fabric Trim	Retail
1200	628	ECHO-EB-1263-C	£528
1400	628	ECHO-EB-1463-C	£552
1600	628	ECHO-EB-1663-C	£597
1800	628	ECHO-EB-1863-C	£716
1200	783	ECHO-EB-1278-C	£528
1400	783	ECHO-EB-1478-C	£552
1600	783	ECHO-EB-1678-C	£597
1800	783	ECHO-EB-1878-C	£716

ASPIRE eBench Screens



TRIO T1

- * 30mm Screen Thickness
- * Fully upholstered in fire retardant fabric
- * Aluminium frame on 3 sides
- * Integral hanging facility
- * 568H (1153mm from floor to top)
- * 723H (1308mm from floor to top)
- * Full width of top

Fabric Band A

W	H	Silver Trim	White Trim	Retail
1200	568	TRIO-T1-1257-AS	TRIO-T1-1257-AW	£274
1400	568	TRIO-T1-1457-AS	TRIO-T1-1457-AW	£318
1600	568	TRIO-T1-1657-AS	TRIO-T1-1657-AW	£386
1800	568	TRIO-T1-1857-AS	TRIO-T1-1857-AW	£404

Fabric Band C

W	H	Silver Trim	White Trim	Retail
1200	568	TRIO-T1-1257-CS	TRIO-T1-1257-CW	£379
1400	568	TRIO-T1-1457-CS	TRIO-T1-1457-CW	£437
1600	568	TRIO-T1-1657-CS	TRIO-T1-1657-CW	£521
1800	568	TRIO-T1-1857-CS	TRIO-T1-1857-CW	£553

1200	723	TRIO-T1-1272-AS	TRIO-T1-1272-AW	£274
1400	723	TRIO-T1-1472-AS	TRIO-T1-1472-AW	£318
1600	723	TRIO-T1-1672-AS	TRIO-T1-1672-AW	£386
1800	723	TRIO-T1-1872-AS	TRIO-T1-1872-AW	£404

1200	723	TRIO-T1-1272-CS	TRIO-T1-1272-CW	£379
1400	723	TRIO-T1-1472-CS	TRIO-T1-1472-CW	£437
1600	723	TRIO-T1-1672-CS	TRIO-T1-1672-CW	£521
1800	723	TRIO-T1-1872-CS	TRIO-T1-1872-CW	£553

Fabric Band B

W	H	Silver Trim	White Trim	Retail
1200	568	TRIO-T1-1257-BS	TRIO-T1-1257-BW	£307
1400	568	TRIO-T1-1457-BS	TRIO-T1-1457-BW	£355
1600	568	TRIO-T1-1657-BS	TRIO-T1-1657-BW	£429
1800	568	TRIO-T1-1857-BS	TRIO-T1-1857-BW	£451

Fabric Band D

W	H	Silver Trim	White Trim	Retail
1200	568	TRIO-T1-1257-DS	TRIO-T1-1257-DW	£614
1400	568	TRIO-T1-1457-DS	TRIO-T1-1457-DW	£706
1600	568	TRIO-T1-1657-DS	TRIO-T1-1657-DW	£823
1800	568	TRIO-T1-1857-DS	TRIO-T1-1857-DW	£888

1200	723	TRIO-T1-1272-BS	TRIO-T1-1272-BW	£307
1400	723	TRIO-T1-1472-BS	TRIO-T1-1472-BW	£355
1600	723	TRIO-T1-1672-BS	TRIO-T1-1672-BW	£429
1800	723	TRIO-T1-1872-BS	TRIO-T1-1872-BW	£451

1200	723	TRIO-T1-1272-DS	TRIO-T1-1272-DW	£614
1400	723	TRIO-T1-1472-DS	TRIO-T1-1472-DW	£706
1600	723	TRIO-T1-1672-DS	TRIO-T1-1672-DW	£823
1800	723	TRIO-T1-1872-DS	TRIO-T1-1872-DW	£888

ASPIRE eBench Screens



HALO T3

- * 30mm Surround
- * Frosted Perspex
- * Aluminium frame on 3 sides
- * Integral hanging facility
- * 568H (1153mm from floor to top)
- * 723H (1308mm from floor to top)
- * Full width of top
- * For Perspex colours see page 43

Perspex

W	H	Silver Trim	White Trim	Retail
1200	568	HALO-T3-1257-S	HALO-T3-1257-W	£388
1400	568	HALO-T3-1457-S	HALO-T3-1457-W	£405
1600	568	HALO-T3-1657-S	HALO-T3-1657-W	£483
1800	568	HALO-T3-1857-S	HALO-T3-1857-W	£511
1200	723	HALO-T3-1272-S	HALO-T3-1272-W	£388
1400	723	HALO-T3-1472-S	HALO-T3-1472-W	£405
1600	723	HALO-T3-1672-S	HALO-T3-1672-W	£483
1800	723	HALO-T3-1872-S	HALO-T3-1872-W	£511



COSY

- * 25mm Screen thickness
- * Full upholstered in fire retardent Blazer fabric
- * Radius corners
- * 628H (1153mm from floor to top)
- * 783H (1308mm from floor to top)
- * **Cosy screens are cut back and are designed to be 200mm shorter than the desk top. If you require it to be full width please order the next size**

Blazer Light Fabric only

W	H	Fabric Trim	Retail
1200	628	COSY-T1-EB-1263	£470
1400	628	COSY-T1-EB-1463	£511
1600	628	COSY-T1-EB-1663	£561
1800	628	COSY-T1-EB-1863	£659
1200	783	COSY-T1-EB-1278	£470
1400	783	COSY-T1-EB-1478	£511
1600	783	COSY-T1-EB-1678	£561
1800	783	COSY-T1-EB-1878	£659

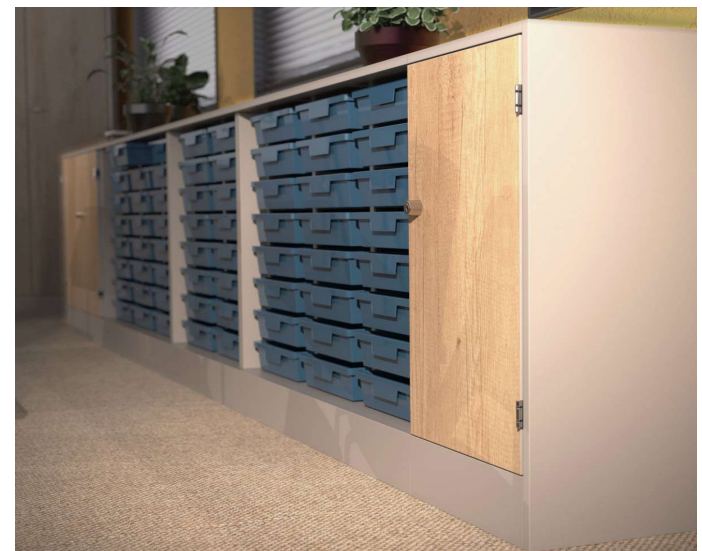
STORAGE WALL AND TEACHER WALL



Our Storage wall system is a floor to ceiling modular storage system which can be customised to fit into whatever space you have available and fully utilising the entire height of your office for storage. Storage Wall may be installed against an existing wall or installed back to back to provide storage on both sides

Lower cupboards and trays units are also part of this versatile range making a cross between Storage Wall and Teacher Wall.

Bespoke heights to your specification also available, POA.



Storage Wall and Teacher Wall

Tall Cupboard - Single Door

W	H	D	Shelves included	Doors	Product Code	Retail
Hinged Left						
400	2200	500	5	1 Door	STW-T400-L	£740
400	2200	500	5	1 Door	STW-T400-R	£740
Hinged Right						
500	2200	500	5	1 Door	STW-T500-L	£790
500	2200	500	5	1 Door	STW-T500-R	£790



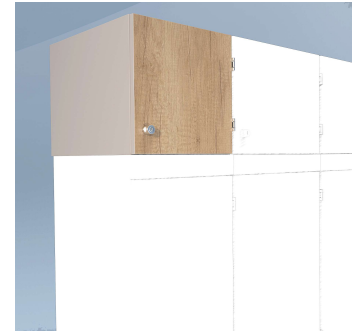
Tall Cupboard - Double Door

W	H	D	Shelves included	Doors	Product Code	Retail
800	2200	500	5	2 Doors	STW-T800	£1,033
1000	2200	500	5	2 Doors	STW-T1000	£1,149



High Level Top Cupboards - Single Door

W	H	D	Shelves included	Doors	Product Code	Retail
Hinged Left						
400	400	500	0	1 Door	STW-H400-L	£264
400	400	500	0	1 Door	STW-H400-R	£264
Hinged Right						
500	400	500	0	1 Door	STW-H500-L	£277
500	400	500	0	1 Door	STW-H500-R	£277



High Level Top Cupboards - Double Doors

W	H	D	Shelves included	Doors	Product Code	Retail
734	400	500	0	2 Doors	STW-H734	£364
800	400	500	0	2 Doors	STW-H800	£373
1000	400	500	0	2 Doors	STW-H1000	£398
1074	400	500	0	2 Doors	STW-H1074	£408



Storage Wall and Teacher Wall

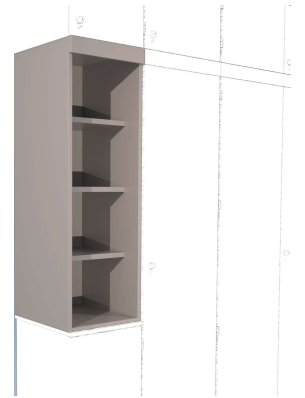
Single Door Top Cupboard

W	H	D	Shelves included	Doors	Product Code	Retail
Hinged Left						
400	1360	500	3	1 Door	STW-TC400-L	£503
500	1360	500	3	1 Door	STW-TC500-L	£540
Hinged Right						
400	1360	500	3	1 Door	STW-TC400-R	£503
500	1360	500	3	1 Door	STW-TC500-R	£540



Single Open Top Cupboard

W	H	D	Shelves included	Doors	Product Code	Retail
400	1360	500	3	No Doors	STW-TCO-400	£283
500	1360	500	3	No Doors	STW-TCO-500	£301



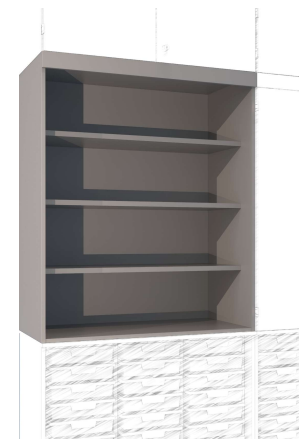
Double Door Top Cupboard

W	H	D	Shelves included	Doors	Product Code	Retail
800	1360	500	3	2 Doors	STW-TC-800	£710
1000	1360	500	3	2 Doors	STW-TC-1000	£786
1074	1360	500	3	2 Doors	STW-TC-1074	£813



Double Open Top Cupboard

W	H	D	Shelves included	Doors	Product Code	Retail
800	1360	500	3	No Doors	STW-TCO-800	£382
1000	1360	500	3	No Doors	STW-TCO-1000	£418
1074	1360	500	3	No Doors	STW-TCO-1074	£436



Storage Wall and Teacher Wall

Single Door Low Cupboard with Shelf

W	H	D	Shelves included	Doors	Product Code	Retail
Hinged Left						
400	840	500	1	1 Door	STW-LS-400-L	£415
500	840	500	1	1 Door	STW-LS-500-L	£439
Hinged Right						
400	840	500	1	1 Door	STW-LS-400-R	£415
500	840	500	1	1 Door	STW-LS-500-R	£439



Double Door Low Cupboard with Shelf

W	H	D	Shelves included	Doors	Product Code	Retail
800	840	500	1	2 Doors	STW-LS-800	£540
1000	840	500	1	2 Doors	STW-LS-1000	£588



Low Cupboard for Trays - 2 Columns

W	H	D	Columns	Doors	Product Code	Retail
734	840	500	2	No Doors	STW-2T-734	£430
734	840	500	2	2 Doors	STW-2T-734-D	£534

TRAYS SOLD SEPERATELY



Low Cupboard for Trays - 3 Columns

W	H	D	Columns	Doors	Product Code	Retail
1074	840	500	3	No Doors	STW-2T-1074	£544
1074	840	500	3	2 Doors	STW-2T-1074-D	£668

TRAYS SOLD SEPERATELY



Teacher Media Wall



Media Unit with Sliding Wipe Board and 2 Open Shelf Units

W	H	D	Shelves included	Doors	Product Code	Retail
3200	1360	500	6	2 Sliding Doors	STW-3200-TV	£1,958
4000	1360	500	6	2 Sliding Doors	STW-4000-TV	£2,192

Panels

Details	Product Code	Retail
Vertical End Panels	STW-VEP	£165
Vertical Scribing Panel	STW-VSP	£146

Optional Extras

Details	Product Code	Retail
Hanging Rail	STW-HR-LR	£30
Filing Cradle - 800W	PFC/8	£204
Filing Cradle - 1000W	PFC/10	£204



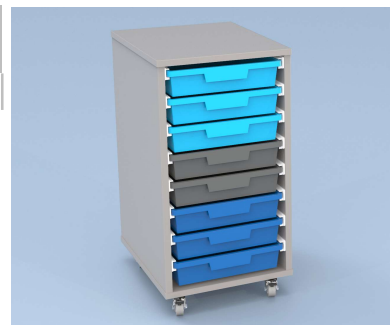
Tray Units - Freestanding

NOTE: Trays sold seperately to enable mixing of colours

8 Tray Unit

W	H	D	To Accommodate	Product Code	Retail
364	763	455	8 Shallow Trays	GRAT-8-S	£217

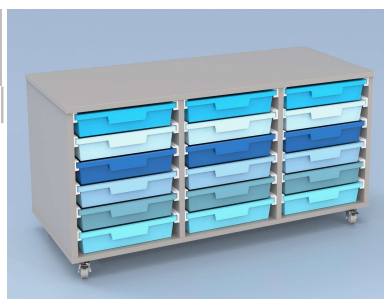
TRAYS SOLD SEPERATELY



18 Tray Unit

W	H	D	To Accommodate	Product Code	Retail
1048	580	455	18 Shallow Trays	GRAT-18-S	£337

TRAYS SOLD SEPERATELY



24 Tray Unit

W	H	D	To Accommodate	Product Code	Retail
1048	763	455	24 Shallow Trays	GRAT-24-S	£408

TRAYS SOLD SEPERATELY



12 Tray Unit

W	H	D	To Accommodate	Product Code	Retail
1460	1145	455	12 Jumbo Trays	GRAT-12-J	£639

TRAYS SOLD SEPERATELY

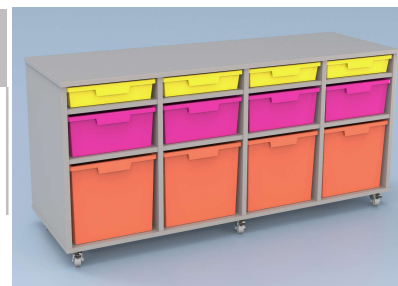


Tray Units - Freestanding

12 Tray Unit

W	H	D	To Accommodate	Product Code	Retail
1358	707	455	4 Shallow Trays 4 Deep Trays 4 Jumbo Trays	GRAT-4J-4D-4S	£478

TRAYS SOLD SEPERATELY



Kinder Box Unit

W	H	D	To Accommodate	Product Code	Retail
706	600	455	4 Shallow Trays 2 Deep Trays	GRAT-KIN-2D-4S	£284

TRAYS SOLD SEPERATELY



Storage Trays

Shallow Trays

Description	Code	Retail
Shallow Tray Tropical Orange (01)	GRAT-F0101P12	£22
Shallow Tray Sunshine Yellow (02)	GRAT-F0102P12	£22
Shallow Tray Plum Purple (05)	GRAT-F0105P12	£22
Shallow Tray Royal Blue (06)	GRAT-F0106P12	£22
Shallow Tray Flame Red (09)	GRAT-F0109P12	£22
Shallow Tray Grass Green (10)	GRAT-F0110P12	£22
Shallow Tray Charcoal Grey (15)	GRAT-F0115P12	£22
Shallow Tray Light Grey (19)	GRAT-F0119P12	£22
Shallow Tray Translucent (20)	GRAT-F0120P12	£22
Shallow Tray Jet Black (21)	GRAT-F0121P12	£22
Shallow Tray Cyan Blue (26)	GRAT-F0126P12	£22
Shallow Tray Lime Jolly (36)	GRAT-F0136P12	£22



Deep Trays

Description	Code	Retail
Deep Tray Tropical Orange (01)	GRAT-F0201P6	£33
Deep Tray Sunshine Yellow (02)	GRAT-F0202P6	£33
Deep Tray Plum Purple (05)	GRAT-F0205P6	£33
Deep Tray Royal Blue (06)	GRAT-F0206P6	£33
Deep Tray Flame Red (09)	GRAT-F0209P6	£33
Deep Tray Grass Green (10)	GRAT-F0210P6	£33
Deep Tray Charcoal Grey (15)	GRAT-F0215P6	£33
Deep Tray Light Grey (19)	GRAT-F0219P6	£33
Deep Tray Translucent (20)	GRAT-F0220P6	£33
Deep Tray Jet Black (21)	GRAT-F0221P6	£33
Deep Tray Cyan Blue (26)	GRAT-F0226P6	£33
Deep Tray Lime Jolly (36)	GRAT-F0236P6	£33



Jumbo Trays

Description	Code	Retail
Jumbo Tray Sunshine Yellow (02)	GRAT-F0302P6	£53
Jumbo Tray Plum Purple (05)	GRAT-F0305P6	£53
Jumbo Tray Royal Blue (06)	GRAT-F0306P6	£53
Jumbo Tray Flame Red (09)	GRAT-F0309P6	£53
Jumbo Tray Grass Green (10)	GRAT-F0310P6	£53
Jumbo Tray Light Grey (19)	GRAT-F0319P6	£53
Jumbo Tray Translucent (20)	GRAT-F0320P6	£53
Jumbo Tray Cyan Blue (26)	GRAT-F0326P6	£53
Jumbo Tray Lime Jolly (36)	GRAT-F0336P6	£53



Storage Tray Colours

<p>01 Tropical Orange</p> <p>Shallow Deep</p>	<p>02 Sunshine Yellow</p> <p>Shallow Deep Jumbo</p>	<p>05 Plum Purple</p> <p>Shallow Deep Jumbo</p>	<p>06 Royal Blue</p> <p>Shallow Deep Jumbo</p>
<p>09 Flame Red</p> <p>Shallow Deep</p>	<p>10 Grass Green</p> <p>Shallow Deep</p>	<p>15 Charcoal Grey</p> <p>Shallow</p>	<p>19 Light Grey</p> <p>Shallow Deep</p>
<p>20 Translucent</p> <p>Shallow Deep</p>	<p>21 Jet Black</p> <p>Shallow</p>	<p>26 Cyan Blue</p> <p>Shallow Deep</p>	<p>36 Jolly Lime</p> <p>Shallow Deep</p>



COLOUR CHART DISCLAIMER

We've made every effort to make the colours on this chart as accurate as possible.

Unfortunately we cannot guarantee an exact colour match.

STORAGE SOLUTIONS



A range of Storage solutions to maximise use of the workplace. A range of pedestals, bookcases, cupboards and filing cabinets to compliment our desking ranges.

All storage and pedestals have solid 18mm back and 25mm tops unless otherwise stated.

All shelves are 25mm thick and locks fitted with snap over key fob.

Heavy duty ball bearing runners are fitted on all drawers and filers and pedestals are fitted with anti-tilt .



Zone Shelving



Designing your own modular furniture has never been easier with our Zone range of shelving units. With choices of size, shape, symmetry and finish, all you need to do is put everything together.

**The Zone shelving range is a system designed for in situ assembly
Supplied flat packed
Delivery and installation is available - POA**

Below is a small selection of units available however this range is so flexible and versatile it can be configured to create a truly bespoke design to your own specification.

Please feel free to send us your design

400 Wide Units

H	W	D	Columns	Compartments	Product Code	Retail
2050	400	400	1	5	ZONE-20-4001	£882
2050	800	400	2	10	ZONE-20-4002	£1,511
2050	1200	400	3	15	ZONE-20-4003	£2,139
2050	+400	400	+1	+5	ZONE-20-400X	£629



H	W	D	Columns	Compartments	Product Code	Retail
1650	400	400	1	4	ZONE-16-4001	£710
1650	800	400	2	8	ZONE-16-4002	£1,204
1650	1200	400	3	12	ZONE-16-4003	£1,698
1650	+400	400	+1	+4	ZONE-16-400X	£494



H	W	D	Columns	Compartments	Product Code	Retail
1250	400	400	1	3	ZONE-12-4001	£577
1250	800	400	2	6	ZONE-12-4002	£987
1250	1200	400	3	9	ZONE-12-4003	£1,397
1250	+400	400	+1	+3	ZONE-12-400X	£410



Zone Shelving

400 Wide Units

H	W	D	Columns	Compartments	Product Code	Retail
850	400	400	1	2	ZONE-08-4001	£451
850	800	400	2	4	ZONE-08-4002	£750
850	1200	400	3	6	ZONE-08-4003	£1,048
850	+400	400	+1	+2	ZONE-08-400X	£298



800 Wide Units

H	W	D	Columns	Compartments	Product Code	Retail
2050	800	400	1	5	ZONE-20-8001	£939
2050	1600	400	2	10	ZONE-20-8002	£1,624
2050	2400	400	3	15	ZONE-20-8003	£2,309
2050	+800	400	+1	+5	ZONE-20-800X	£685



H	W	D	Columns	Compartments	Product Code	Retail
1650	800	400	1	4	ZONE-16-8001	£757
1650	1600	400	2	8	ZONE-16-8002	£1,299
1650	2400	400	3	12	ZONE-16-8003	£1,840
1650	+800	400	+1	+4	ZONE-16-800X	£541



H	W	D	Columns	Compartments	Product Code	Retail
1250	800	400	1	3	ZONE-12-8001	£614
1250	1600	400	2	6	ZONE-12-8002	£1,062
1250	2400	400	3	9	ZONE-12-8003	£1,510
1250	+800	400	+1	+3	ZONE-12-800X	£448



H	W	D	Columns	Compartments	Product Code	Retail
850	800	400	1	2	ZONE-08-08001	£480
850	1600	400	2	4	ZONE-08-08002	£806
850	2400	400	3	6	ZONE-08-08003	£1,133
850	+800	400	+1	+2	ZONE-08-0800X	£327



Zone Shelving

COMPARTMENT INFILLS

Details	Dimensions	Product Code	Retail
W400 Integrated Horizontal Infill	W400 D400	ZONE-HINF-4/4	£60
W800 Integrated Horizontal Infill	W800 D400	ZONE-HINF-8/4	£70
H400 Integrated Vertical Infill	H400 D400	ZONE-VINF-4/4	£60
H800 Integrated Vertical Infill	H800 D400	ZONE-VINF-8/4	£70
W400 x H400 Inset Open box	W400 H400 D400	ZONE-BOX-4/4	£115
W800 x H400 Inset Open box	W800 H400 D400	ZONE-BOX-8/4	£160
W800 x H800 Inset Open box	W800 H800 D400	ZONE-BOX-8/8	£180
W400 x H400 Inset Open cupboard	W400 H400 D400	ZONE-OSC-4/4	£125
W800 x H400 Inset Open cupboard	W800 H400 D400	ZONE-OSC-8/4	£193
W800 x H800 Inset Open cupboard	W800 H800 D400	ZONE-OSC-8/8	£233
W400 x H400 Integrated Cupboard - 1/D	W400 H400 D400	ZONE-SDC-4/4	£235
W800 x H400 Integrated Cupboard - 2/D	W800 H400 D400	ZONE-DDC-8/4	£412
W800 x H800 Integrated Cupboard - 2/D	W800 H800 D400	ZONE-DDC-8/8	£472
W400 Planter	W400 H140 D400	ZONE-PLA-4/4	£100
W800 Planter	W800 H140 D400	ZONE-PLA-8/4	£117



Artificial Plants for Planters

Details	Product Code	Retail
Low Grass Planter including Liner	TT-44-LGR-IP	£258
Tall Bamboo Planter including Liner	TT-44-BAM-IP	£722



Filing - Steel

1 Filing Drawer + 2 Personal Drawers

W	D	H	Colour	Product Code	Retail
300	500	600	Silver	BV30-S	£246
300	500	600	White	BV30-W	£246
300	500	600	Black	BV30-B	£246
400	500	600	Silver	BV40-S	£255
400	500	600	White	BV40-W	£255
400	500	600	Black	BV40-B	£255



1 Filing Drawer + 2 Personal Drawers

W	D	H	Colour	Product Code	Retail
300	500	597	Silver	PMS/3521-S	£516
300	500	597	White	PMS/3521-W	£516
300	500	597	Black	PMS/3521-B	£516
410	500	597	Silver	PMS/4521-S	£533
410	500	597	White	PMS/4521-W	£533
410	500	597	Black	PMS/4521-B	£533



Caddy Unit

W	D	H	Colour	Product Code	Retail
Left Hand					
900	480	645	White	SMC-9521L	£786
Right Hand					
900	480	645	White	SMC-9521R	£786



Left Hand Shown

Please note :

Further discounts available on the PMS/SMC range of pedestals for quantities above 1

Filing - Wooden

NOTE: A pen tray is included in the top personal drawer of W390mm and W400mm pedestals

Fixed Pedestals

W	D	H	Details	Product Code	Non Locking	Locking
311	530	516	1 Filing, 1 Personal	SFP2/D	£231	£290
311	530	516	3 Personal	SFP3/D	£261	£321
386	530	516	1 Filing, 1 Personal	FP2/D-400	£236	£295
386	530	516	3 Personal	FP3/D-400	£266	£326



Low Mobile Pedestals

W	D	H	Details	Product Code	Non Locking	Locking
320	540	528	1 Filing, 1 Personal	LPS2/D	£270	£329
320	540	528	3 Personal	LPS3/D	£300	£360
400	540	528	1 Filing, 1 Personal	LP2/D-400	£275	£334
400	540	528	3 Personal	LP3/D-400	£305	£365



Under Desk Mobile Pedestals - H688mm

W	D	H	Details	Product Code	Non Locking	Locking
320	540	688	2 Filing	SUD/2D	£293	£348
320	540	688	1 Filing, 2 Personal	SUD/3D	£323	£380
320	540	688	4 Personal	SUD/4D	£353	£418
400	540	688	2 Filing	UD2/D-400	£298	£353
400	540	688	1 Filing, 2 Personal	UD3/D-400	£328	£385
400	540	688	4 Personal	UD4/D-400	£358	£423



PLEASE ADD -NL TO PRODUCT CODE IF NON LOCKING OPTION REQUIRED

Desk Height Pedestals - D600mm

W	D	H	Details	Product Code	Non Locking	Locking
320	600	740	2 Filing	SDH600/2	£296	£351
320	600	740	1 Filing, 2 Personal	SDH600/3	£326	£383
320	600	740	4 Personal	SDH600/4	£356	£421
400	600	740	2 Filing	DH600/2-400	£301	£356
400	600	740	1 Filing, 2 Personal	DH600/3-400	£331	£388
400	600	740	4 Personal	DH600/4-400	£361	£426



PLEASE ADD -NL TO PRODUCT CODE IF NON LOCKING OPTION REQUIRED

PLEASE NOTE - New pedestal design

Filing - Wooden

NOTE: A pen tray is included in the top personal drawer of W390mm and W400mm pedestals

Desk Height Pedestals - D800mm

W	D	H	Details	Product Code	Non Locking	Locking
320	800	740	2 Filing	SDH800/2	£311	£366
320	800	740	1 Filing, 2 Personal	SDH800/3	£341	£398
320	800	740	4 Personal	SDH800/4	£371	£436
400	800	740	2 Filing	DH800/2-400	£316	£371
400	800	740	1 Filing, 2 Personal	DH800/3-400	£346	£403
400	800	740	4 Personal	DH800/4-400	£376	£441

PLEASE ADD -NL TO PRODUCT CODE IF NON LOCKING OPTION REQUIRED



Desk Support Pedestals

W	D	H	Details	Product Code	Non Locking	Locking
311	575	715	2 Filing	SSP/2D	£296	£351
311	575	715	1 Filing, 2 Personal	SSP/3D	£326	£383
311	575	715	4 Personal	SSP/4D	£356	£421
386	575	715	2 Filing	SP/2D - 400	£301	£356
386	575	715	1 Filing, 2 Personal	SP/3D - 400	£331	£388
386	575	715	4 Personal	SP/4D - 400	£361	£426

PLEASE ADD -NL TO PRODUCT CODE IF NON LOCKING OPTION REQUIRED



Filing Cabinets

W	D	H	Details	Product Code	Locking
480	600	740	2 Drawers	2DF	£422
480	600	1057	3 Drawers	3DF	£483
480	600	1375	4 Drawers	4DF	£532



PLEASE NOTE - New pedestal design

Filing - Wooden

NOTE: A pen tray is included in the top personal drawer of W390mm and W400mm pedestals

Slimline Pedestals with Top Bookcase

W	D	H	Details	Product Code	Non Locking	Locking
Left Hand						
320	600	1105	2 Filing	SPST-2/D/6-L	£433	£488
320	600	1105	1 Filing, 2 Personal	SPST-3/D/6-L	£451	£507
320	600	1105	4 Personal	SPST-4/D/6-L	£470	£532
Right Hand						
320	600	1105	2 Filing	SPST-2/D/6-R	£433	£488
320	600	1105	1 Filing, 2 Personal	SPST-3/D/6-R	£451	£507
320	600	1105	4 Personal	SPST-4/D/6-R	£470	£532



Left Facing Shown

W	D	H	Details	Product Code	Non Locking	Locking
Left Hand						
320	800	1105	2 Filing	SPST-2/D/8-L	£453	£508
320	800	1105	1 Filing, 2 Personal	SPST-3/D/8-L	£471	£527
320	800	1105	4 Personal	SPST-4/D/8-L	£490	£552
Right Hand						
320	800	1105	2 Filing	SPST-2/D/8-R	£453	£508
320	800	1105	1 Filing, 2 Personal	SPST-3/D/8-R	£471	£527
320	800	1105	4 Personal	SPST-4/D/8-R	£490	£552

PLEASE ADD -NL TO PRODUCT CODE IF NON LOCKING OPTION REQUIRED

Under Desk Mobile Storage Unit

W	D	H	Details	Product Code	Non Locking	Locking
Left Hand						
800	540	589	1 Filing, 1 Personal	MSU-2/D-L	£462	£498
800	540	589	3 Personal	MSU-3/D-L	£481	£518
Right Hand						
800	540	589	1 Filing, 1 Personal	MSU-2/D-R	£462	£498
800	540	589	3 Personal	MSU-3/D-R	£481	£518

PLEASE ADD -NL TO PRODUCT CODE IF NON LOCKING OPTION REQUIRED



Left Hand

Right Hand



NOTE: A pen tray is included in the top personal drawer of W390mm and W400mm pedestals

Wooden Storage - Height Adjustable



Open Cupboards

H	W	D	Details	Product Code	Retail
740	1000	525	1 Adjustable Shelf	HA-OSC/74	£330
1200	1000	525	2 Adjustable Shelves	HA-OSC/12	£421
1820	1000	525	3 Adjustable Shelves	HA-OSC/182	£571
2000	1000	525	4 Adjustable Shelves	HA-OSC/200	£639



Double Door Cupboards

H	W	D	Details	Product Code	Retail
740	1000	525	1 Adjustable Shelf	HA-DDC/74	£411
1200	1000	525	2 Adjustable Shelves	HA-DDC/12	£493
1820	1000	525	3 Adjustable Shelves	HA-DDC/182	£643
2000	1000	525	4 Adjustable Shelves	HA-DDC/200	£724



Combination Cupboards with 740H Doors

H	W	D	Details	Product Code	Retail
1820	1000	525	1 Adjustable Shelf	HA-DDC-COM/182	£644
2000	1000	525	2 Adjustable Shelves	HA-DDC-COM/200	£687



Wooden Storage - Height Adjustable

Tambour Door Cupboards

H	W	D	Details	Product Code	Retail
---	---	---	---------	--------------	--------

Silver Doors

740	1000	525	1 Adjustable Shelf	HA-TDC/74-S	£578
1200	1000	525	2 Adjustable Shelves	HA-TDC/120-S	£717
1820	1000	525	3 Adjustable Shelves	HA-TDC/182-S	£918
2000	1000	525	4 Adjustable Shelves	HA-TDC/200-S	£999

White Doors

740	1000	525	1 Adjustable Shelf	HA-TDC/74-W	£578
1200	1000	525	2 Adjustable Shelves	HA-TDC/120-W	£717
1820	1000	525	3 Adjustable Shelves	HA-TDC/182-W	£918
2000	1000	525	4 Adjustable Shelves	HA-TDC/200-W	£999



Bookcases

H	W	D	Details	Product Code	Retail
---	---	---	---------	--------------	--------

740	800	400	1 Adjustable Shelf	HA-BK2/T	£218
1200	800	400	2 Adjustable Shelves	HA-BK3/T	£285
1600	800	400	3 Adjustable Shelves	HA-BK4/T	£345
2000	800	400	4 Adjustable Shelves	HA-BK5/T	£405

For A4 Files



Bookcases with Doors

H	W	D	Details	Product Code	Retail
---	---	---	---------	--------------	--------

740	800	400	2 Tier - 1 Shelf	HA-BK2/T/D	£329
1200	800	400	3 Tier - 2 Shelves	HA-BK3/T/D	£388
1600	800	400	4 Tier - 3 Shelves	HA-BK4/T/D	£515
2000	800	400	5 Tier - 4 Shelves	HA-BK5/T/D	£588

For A4 Files



Combination Bookcases with 740H Doors

H	W	D	Details	Product Code	Retail
---	---	---	---------	--------------	--------

1200	800	400	3 Tier - 2 Shelves	HA-BK-COM-12/74	£360
1600	800	400	4 Tier - 3 Shelves	HA-BK-COM-16/74	£453
2000	800	400	5 Tier - 4 Shelves	HA-BK-COM-20/74	£519

For A4 Files



Wooden Storage - Height Adjustable

Combination Bookcases with 1200H Doors

H	W	D	Details	Product Code	Retail
1600	800	400	4 Tier - 3 Shelves	HA-BK-COM-16/120	£478
2000	800	400	5 Tier - 4 Shelves	HA-BK-COM-20/120	£522

For A4 Files



Optional Extras

Details	Code	Retail
Extra shelf for Double Door Cupboard	CBS10	£47
Extra shelf for Tambour Cupboard	TDS10	£47
Extra shelf for Bookcase	BKS8	£41
Pull out filing cradle for Double Door cupboard	PFC/10	£204
Pull out filing cradle for Tambour Cupboard	PFC/10T	£204



Top Planters

H	W	D	Details	Note	Product Code	Retail
140	1000	525	For Cupboards	Supplied with fixing tape	PB-1000/140	£239
200	1000	525	For Cupboards	Supplied with fixing tape	PB-1000/200	£264
140	800	400	For Bookcases	Supplied with fixing tape	PB-800/140	£166
200	800	400	For Bookcases	Supplied with fixing tape	PB-800/200	£179

Artificial Plants for Planters

Details	Product Code	Retail
Low Grass Planter	TT-44-LGR-IP	£258
Tall Bamboo Planter	TT-44-BAM-IP	£722



Water proof membrane required if using real plants (not supplied)

Lockers



Storage Lockers

Our Lockers are the perfect solution for adding secure storage to any workplace.

They are supplied with a key lock or code lock and with either Left or Right hand opening doors, making them suitable for any workspace environment.

PLEASE NOTE:

Tops are included in the price of the lockers.

H740 Lockers

H	W	D	Number of doors	Lock Type	Post slot	Notes	Product code	Retail
740	400	400	2	Key	No		LOK74-2K	£263
740	400	400	2	Key	Yes		LOK74-2K-PS	£263
740	400	400	2	Code	No		LOK74-2C	£735
740	400	400	2	Code	Yes		LOK74-2C-PS	£735

H1200 Lockers

H	W	D	Number of doors	Lock Type	Post slot	Notes	Product code	Retail
1200	400	400	1	Key	No	with hanging rail	LOK12-1K	£317
1200	400	400	1	Key	Yes	with hanging rail	LOK12-1K-PS	£317
1200	400	400	1	Code	No	with hanging rail	CODE LOCK	£553
1200	400	400	1	Code	Yes	with hanging rail	LOK12-1C	£553

Lockers



H1200 Lockers

H	W	D	Number of doors	Lock Type	Post slot	Notes	Product code	Retail
1200	400	400	2	Key	No		LOK12-2K	£371
1200	400	400	2	Key	Yes		LOK12-2K-PS	£371
1200	400	400	2	Code	No		LOK12-2C	£843
1200	400	400	2	Code	Yes		LOK12-2C-PS	£843

H	W	D	Number of doors	Lock Type	Post slot	Notes	Product code	Retail
1200	400	400	3	Key	No		LOK12-3K	£437
1200	400	400	3	Key	Yes		LOK12-3K-PS	£437
1200	400	400	3	Code	No		LOK12-3C	£1,146
1200	400	400	3	Code	Yes		LOK12-3C-PS	£1,146

H1600 Lockers

H	W	D	Number of doors	Lock Type	Post slot	Notes	Product code	Retail
1600	400	400	1	Key	No	with hanging rail	LOK16-1K	£378
1600	400	400	1	Key	Yes	with hanging rail	LOK16-1K-PS	£378
1600	400	400	1	Code	No	with hanging rail	LOK16-1C	£614
1600	400	400	1	Code	Yes	with hanging rail	LOK16-1C-PS	£614

Lockers



H1600 Lockers

H	W	D	Number of doors	Lock Type	Post slot	Notes	Product code	Retail
1600	400	400	2	Key	No		LOK16-2K	£423
1600	400	400	2	Key	Yes		LOK16-2K-PS	£423
1600	400	400	2	Code	No		LOK16-2C	£895
1600	400	400	2	Code	Yes		LOK16-2C-PS	£895

H	W	D	Number of doors	Lock Type	Post slot	Notes	Product code	Retail
1600	400	400	3	Key	No		LOK16-3K	£489
1600	400	400	3	Key	Yes		LOK16-3K-PS	£489
1600	400	400	3	Code	No		LOK16-3C	£1,198
1600	400	400	3	Code	Yes		LOK16-3C-PS	£1,198

H	W	D	Number of doors	Lock Type	Post slot	Notes	Product code	Retail
1600	400	400	4	Key	No		LOK16-4K	£463
1600	400	400	4	Key	Yes		LOK16-4K-PS	£463
1600	400	400	4	Code	No		LOK16-4C	£1,408
1600	400	400	4	Code	Yes		LOK16-4C-PS	£1,408

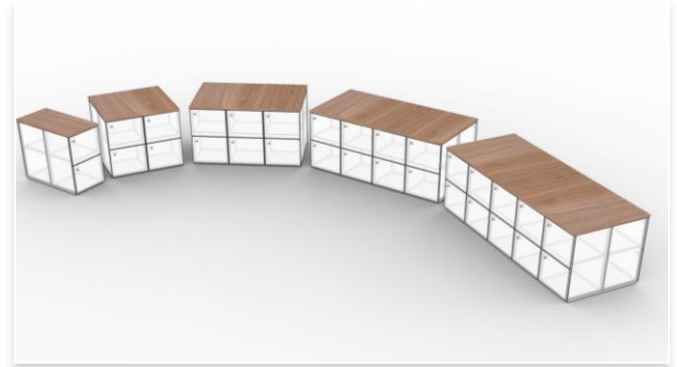
Locker Tops



Back to Back Tops

D	Details	Product Code
800	2 Lockers	LOK-BB-2
800	4 Lockers	LOK-BB-4
800	6 Lockers	LOK-BB-6
800	8 Lockers	LOK-BB-8
800	10 Lockers	LOK-BB-10

Note: Grain Back to Front as standard



Side by Side Tops

D	Details	Product Code
400	1 Locker	LOK-SS-1
400	2 Lockers	LOK-SS-2
400	3 Lockers	LOK-SS-3
400	4 Lockers	LOK-SS-4
400	5 Lockers	LOK-SS-5

Note: Grain Back to Front as standard



Locker tops are included in the price of the lockers. Please select the top to suit your configuration.

TABLES



Enhance any workspace with our top-quality, UK-made office tables, designed for durability, functionality, and style.

Crafted from premium materials, these tables provide ample workspace, sleek finishes, and ergonomic comfort. Whether you're furnishing an office, classroom, or hotel, our tables offer versatile solutions for any environment.

Their sturdy construction ensures long-lasting use, making them ideal for high-traffic areas like schools and hotels, while their modern designs add a professional touch to office settings. Available in various sizes and styles, our UK-made office tables cater to diverse needs, ensuring a comfortable and productive experience for students, staff, or guests alike."



Classic Conference Tables

Rectangle Meeting Tables

W	D	H	Base	Product Code	Retail
25mm					
1800	1100	740	H Frame	CTR/18/H-25	£542
2100	1100	740	H Frame	CTR/21/H-25	£635
2500	1100	740	H Frame	CTR/25/H-25	£727
4000*	1100	740	H Frame	CTR/40/H-25	£1,200
36mm					
1800	1100	751	H Frame	CTR/18/H-36	£1,084
2100	1100	751	H Frame	CTR/21/H-36	£1,269
2500	1100	751	H Frame	CTR/25/H-36	£1,454
4000*	1100	751	H Frame	CTR/40/H-36	£2,400

* 2 Part Table



Barrel Meeting Tables

W	D	H	Base	Product Code	Retail
25mm					
2000	1200>800	740	H Frame	CTB/20/H-25	£868
2400	1600>1200	740	H Frame	CTB/24/H-25	£1,063
36mm					
2000	1200>800	751	H Frame	CTB/20/H-36	£1,735
2400	1600>1200	751	H Frame	CTB/24/H-36	£2,125



Oval Meeting Tables

W	D	H	Base	Product Code	Retail
25mm					
2000	1200	740	H Frame	CTO/20/H-25	£979
2200	1200	740	H Frame	CTO/22/H-25	£1,016
2400	1200	740	H Frame	CTO/24/H-25	£1,076
2750	1200	740	H Frame	CTO/27/H-25	£1,186
36mm					
2000	1200	751	H Frame	CTO/20/H-36	£1,959
2200	1200	751	H Frame	CTO/22/H-36	£2,032
2400	1200	751	H Frame	CTO/24/H-36	£2,151
2750	1200	751	H Frame	CTO/27/H-36	£2,373



Classic Conference Tables

D-End Meeting Tables

W	D	H	Base	Product Code	Retail
25mm					
2000	1200	740	H Frame	CTD/20/H-25	£979
2400	1200	740	H Frame	CTD/24/H-25	£1,076
36mm					
2000	1200	751	H Frame	CTD/20/H-36	£1,959
2400	1200	751	H Frame	CTD/24/H-36	£2,151



Circular Meeting Tables - Criss Cross

Dia.	H	Base	Product Code	Retail
25mm				
1000	740	Criss Cross	CTC/10/C-25	£325
1200	740	Criss Cross	CTC/12/C-25	£400
1600	740	Criss Cross	CTC/16/C-25	£535
36mm				
1000	751	Criss Cross	CTC/10/C-36	£650
1200	751	Criss Cross	CTC/12/C-36	£801
1600	751	Criss Cross	CTC/16/C-36	£1,071



Single Meeting End Extension

Dia.	H	Base	Product Code	Retail
25mm				
1200	740	T Base	CCE/12/C-25	£528
1600	740	T Base	CCE/16/C-25	£690
36mm				
1200	751	T Base	CCE/12/C-36	£1,057
1600	751	T Base	CCE/16/C-36	£1,381



Double Meeting End Extension

Dia.	H	Base	Product Code	Retail
25mm				
1200	740	T' Base	MDE12-25	£391
1600	740	T' Base	MDE16-25	£511
36mm				
1200	751	T' Base	MDE12-36	£781
1600	751	T' Base	MDE16-36	£1,021



Classic Conference Tables

Office Tables - Tubular Legs

W	D	H	Legs	Product Code	Retail
1200	800	740	Silver	OT12-S	£186
1400	800	740	Silver	OT14-S	£215
1600	800	740	Silver	OT16-S	£254
1800	800	740	Silver	OT18-S	£263
1200	800	740	Chrome	OT12-C	£212
1400	800	740	Chrome	OT14-C	£241
1600	800	740	Chrome	OT16-C	£254
1800	800	740	Chrome	OT18-C	£267



Coffee Tables

W	D	H	Legs	Product Code	Retail
Rectangle					
1200	600	400	H Frame no shelf	CFT12	£153
1200	600	400	H Frame with shelf	CFT12/S	£216
1200	600	400	H Frame with shelf *	CFT12/S/C	£296
Square					
600	600	400	Criss Cross	CFT6	£178
Circular					
600dia		400	Criss Cross	CT6D	£204
900dia		400	Criss Cross	CT9D	£240



Atlas Tables



Our metal frame tables with 50mm x 50mm legs can be used in all sorts of environments and situations. It can be used as a simple 4 leg desk solution and is a great modern solution for meeting tables. The range also offers optional cable management, enabling both vertical and horizontal routing.

W	D	H	Silver Frame	White Frame	Black Frame	Retail
D800mm						
1200	800	740	ATS-12/8-S	ATS-12/8-W	ATS-12/8-B	£465
1400	800	740	ATS-14/8-S	ATS-14/8-W	ATS-14/8-B	£510
1600	800	740	ATS-16/8-S	ATS-16/8-W	ATS-16/8-B	£546
1800	800	740	ATS-18/8-S	ATS-18/8-W	ATS-18/8-B	£561
D1000mm						
1000	1000	740	ATS-10/10-S	ATS-10/10-W	ATS-10/10-B	£470
1200	1000	740	ATS-12/10-S	ATS-12/10-W	ATS-12/10-B	£516
1400	1000	740	ATS-14/10-S	ATS-14/10-W	ATS-14/10-B	£547
1600	1000	740	ATS-16/10-S	ATS-16/10-W	ATS-16/10-B	£586
1800	1000	740	ATS-18/10-S	ATS-18/10-W	ATS-18/10-B	£605
2000	1000	740	ATS-20/10-S	ATS-20/10-W	ATS-20/10-B	£661
2400	1000	740	ATS-24/10-S	ATS-24/10-W	ATS-24/10-B	£971
3000	1000	740	ATS-30/10-S	ATS-30/10-W	ATS-30/10-B	£1,089
3600	1000	740	ATS-36/10-S	ATS-36/10-W	ATS-36/10-B	£1,201
4000	1000	740	ATS-40/10-S	ATS-40/10-W	ATS-40/10-B	£1,239
D1200mm						
1200	1200	740	ATS-12/12-S	ATS-12/12-W	ATS-12/12-B	£546
1400	1200	740	ATS-14/12-S	ATS-14/12-W	ATS-14/12-B	£581
1600	1200	740	ATS-16/12-S	ATS-16/12-W	ATS-16/12-B	£624
1800	1200	740	ATS-18/12-S	ATS-18/12-W	ATS-18/12-B	£646
2000	1200	740	ATS-20/12-S	ATS-20/12-W	ATS-20/12-B	£669
2400	1200	740	ATS-24/12-S	ATS-24/12-W	ATS-24/12-B	£1,023
3000	1200	740	ATS-30/12-S	ATS-30/12-W	ATS-30/12-B	£1,152
3600	1200	740	ATS-36/12-S	ATS-36/12-W	ATS-36/12-B	£1,276
4000	1200	740	ATS-40/12-S	ATS-40/12-W	ATS-40/12-B	£1,321

Atlas Tables

W	D	H	Silver Frame	White Frame	Black Frame	Retail
D1400mm						
1400	1400	740	ATS-14/14-S	ATS-14/14-W	ATS-14/14-B	£619
1600	1400	740	ATS-16/14-S	ATS-16/14-W	ATS-16/14-B	£666
1800	1400	740	ATS-18/14-S	ATS-18/14-W	ATS-18/14-B	£692
2000	1400	740	ATS-20/14-S	ATS-20/14-W	ATS-20/14-B	£718
2400	1400	740	ATS-24/14-S	ATS-24/14-W	ATS-24/14-B	£1,080
3000	1400	740	ATS-30/14-S	ATS-30/14-W	ATS-30/14-B	£1,220
3600	1400	740	ATS-36/14-S	ATS-36/14-W	ATS-36/14-B	£1,354
4000	1400	740	ATS-40/14-S	ATS-40/14-W	ATS-40/14-B	£1,407

D1600mm						
1600	1600	740	ATS-16/16-S	ATS-16/16-W	ATS-16/16-B	£717
1800	1600	740	ATS-18/16-S	ATS-18/16-W	ATS-18/16-B	£746
2000	1600	740	ATS-20/16-S	ATS-20/16-W	ATS-20/16-B	£776
2400	1600	740	ATS-24/16-S	ATS-24/16-W	ATS-24/16-B	£1,145
3000	1600	740	ATS-30/16-S	ATS-30/16-W	ATS-30/16-B	£1,296
3600	1600	740	ATS-36/16-S	ATS-36/16-W	ATS-36/16-B	£1,441
4000	1600	740	ATS-40/16-S	ATS-40/16-W	ATS-40/16-B	£1,501

Accessories

Details	Dimensions	Silver	White	Black	Retail
Single width cable tray	1000mm	MT-SCAB-SS	MT-SCAB-SW	MT-SCAB-SB	£47
Single width cable tray	1200mm>1600mm	MT-SCAB-MS	MT-SCAB-MW	MT-SCAB-MB	£49
Single width cable tray	1800mm	MT-SCAB-LS	MT-SCAB-LW	MT-SCAB-LB	£82
Double width cable tray	1000mm	MT-DCAB-SS	MT-DCAB-SW	MT-DCAB-SB	£67
Double width cable tray	1200mm>1500mm	MT-DCAB-MS	MT-DCAB-MW	MT-DCAB-MB	£73
Double width cable tray	1600mm>1800mm	MT-DCAB-LS	MT-DCAB-LW	MT-DCAB-LB	£122
Power Tower - Cable mgmt from floor to cable tray		MT-POW-S	MT-POW-W	MT-POB-B	£129

Note: Other sizes available, please enquire.

NEW RAL COLOURS AVAILABLE
SEE PAGE 4 FOR FULL COLOUR RANGE AND PRICES



Capri Meeting Tables



W	D	H	Sections	Chrome Frame	White Frame	Black Frame
Rectangular						
1800	800	730	1	CTR800/180-C £1,269	CTR800/180-W £1,181	CTR800/180-B £1,181
2000	800	730	1	CTR800/200-C £1,289	CTR800/200-W £1,202	CTR800/200-B £1,202
2000	1000	730	1	CTR100/200-C £1,330	CTR100/200-W £1,243	CTR100/200-B £1,243
2400	1200	730	1	CTR120/240-C £1,454	CTR120/240-W £1,366	CTR120/240-B £1,366
2750	1200	730	1	CTR120/280-C £1,495	CTR120/280-W £1,407	CTR120/280-B £1,407
2750	1400	730	1	CTR140/280-C £1,932	CTR140/280-W £1,800	CTR140/280-B £1,800
3200	1200	730	2	CTR120/320-C £2,826	CTR120/320-W £2,606	CTR120/320-B £2,606
3200	1400	730	2	CTR140/320-C £2,994	CTR140/320-W £2,774	CTR140/320-B £2,774
3600	1200	730	2	CTR120/360-C £2,981	CTR120/360-W £2,761	CTR120/360-B £2,761
3600	1400	730	2	CTR140/360-C £3,056	CTR140/360-W £2,835	CTR140/360-B £2,835
4000	1200	730	2	CTR120/400-C £3,043	CTR120/400-W £2,822	CTR120/400-B £2,822
4000	1400	730	2	CTR140/400-C £3,124	CTR140/400-W £2,904	CTR140/400-B £2,904
Square						
1200	1200	730	1	CTQ120/120-C £1,247	CTQ120/120-W £1,159	CTQ120/120-B £1,159
1400	1400	730	1	CTQ140/140-C £1,317	CTQ140/140-W £1,229	CTQ140/140-B £1,229
Oval						
2000	1200	730	1	CTO120/200-C £1,450	CTO120/200-W £1,363	CTO120/200-B £1,363
2200	1200	730	1	CTO120/220-C £1,481	CTO120/220-W £1,393	CTO120/220-B £1,393
2400	1200	730	1	CTO120/240-C £1,534	CTO120/240-W £1,446	CTO120/240-B £1,446
2750	1200	730	1	CTO120/280-C £1,575	CTO120/280-W £1,487	CTO120/280-B £1,487
3600	1600	730	2	CTO160/360-C £2,736	CTO160/360-W £2,560	CTO160/360-B £2,560
Round						
1200 dia	730	1	CTC1200-C £1,273	CTC1200-W £1,186	CTC1200-B £1,186	
1400 dia	730	1	CTC1400-C £1,343	CTC1400-W £1,256	CTC1400-B £1,256	
1600 dia	730	1	CTC1600-C £1,438	CTC1600-W £1,351	CTC1600-B £1,351	

Note - supplied with adjustable feet - 30mm adjustment

Splinta Connekt Meeting Tables



SPLINTA CONNEKT is a modular meeting/boardroom table system. Consisting of real oak Splinta legs and a series of connecting rails to construct a rigid, highly stable underframe. The slimline profile of the connecting rails increase knee space around the entire perimeter of the table and cleverly designed intermediate legs provide support on long spans and assist when splicing together multiple table tops for large configurations.

W	D	H	Tops	Natural Leg	Black Leg	Retail
---	---	---	------	-------------	-----------	--------

D1000mm

1200	1000	740	1	SPL-10/12	SPL-10/12-B	£897
1400	1000	740	1	SPL-10/14	SPL-10/14-B	£921
1600	1000	740	1	SPL-10/16	SPL-10/16-B	£942
1800	1000	740	1	SPL-10/18	SPL-10/18-B	£966
2000	1000	740	1	SPL-10/20	SPL-10/20-B	£994
2400	1000	740	1	SPL-10/24	SPL-10/24-B	£1,057
3000	1000	740	2	SPL-10/30	SPL-10/30-B	£1,554
3600	1000	740	2	SPL-10/36	SPL-10/36-B	£1,613
4000	1000	740	2	SPL-10/40	SPL-10/40-B	£1,668

D1400mm

1400	1400	740	1	SPL-14/14	SPL-14/14-B	£978
1600	1400	740	1	SPL-14/16	SPL-14/16-B	£1,006
1800	1400	740	1	SPL-14/18	SPL-14/18-B	£1,037
2000	1400	740	1	SPL-14/20	SPL-14/20-B	£1,071
2400	1400	740	1	SPL-14/24	SPL-14/24-B	£1,148
3000	1400	740	2	SPL-14/30	SPL-14/30-B	£1,610
3600	1400	740	2	SPL-14/36	SPL-14/36-B	£1,736
4000	1400	740	2	SPL-14/40	SPL-14/40-B	£1,804

W	D	H	Tops	Natural Leg	Black Leg	Retail
---	---	---	------	-------------	-----------	--------

D1200mm

1200	1200	740	1	SPL-12/12	SPL-12/12-B	£920
1400	1200	740	1	SPL-12/14	SPL-12/14-B	£947
1600	1200	740	1	SPL-12/16	SPL-12/16-B	£971
1800	1200	740	1	SPL-12/18	SPL-12/18-B	£999
2000	1200	740	1	SPL-12/20	SPL-12/20-B	£1,030
2400	1200	740	1	SPL-12/24	SPL-12/24-B	£1,100
3000	1200	740	2	SPL-12/30	SPL-12/30-B	£1,557
3600	1200	740	2	SPL-12/36	SPL-12/36-B	£1,676
4000	1200	740	2	SPL-12/40	SPL-12/40-B	£1,738

D1600mm

1600	1600	740	1	SPL-16/16	SPL-16/16-B	£1,036
1800	1600	740	1	SPL-16/18	SPL-16/18-B	£1,071
2000	1600	740	1	SPL-16/20	SPL-16/20-B	£1,108
2400	1600	740	1	SPL-16/24	SPL-16/24-B	£1,192
3000	1600	740	2	SPL-16/30	SPL-16/30-B	£1,657
3600	1600	740	2	SPL-16/36	SPL-16/36-B	£1,800
4000	1600	740	2	SPL-16/40	SPL-16/40-B	£1,875



Splinta Poseur Tables



W	D	H	Tops	Natural Leg	Black Leg	Retail
---	---	---	------	-------------	-----------	--------

D1000mm

1400	1000	1106	1	SPL/P-10/14	SPL/P-10/14-B	£1,236
1600	1000	1106	1	SPL/P-10/16	SPL/P-10/16-B	£1,269
1800	1000	1106	1	SPL/P-10/18	SPL/P-10/18-B	£1,296
2000	1000	1106	1	SPL/P-10/20	SPL/P-10/20-B	£1,323
2400	1000	1106	1	SPL/P-10/24	SPL/P-10/24-B	£1,406
3000	1000	1106	2	SPL/P-10/30	SPL/P-10/30-B	£2,041
3600	1000	1106	2	SPL/P-10/36	SPL/P-10/36-B	£2,124
4000	1000	1106	2	SPL/P-10/40	SPL/P-10/40-B	£2,177

W	D	H	Tops	Natural Leg	Black Leg	Retail
---	---	---	------	-------------	-----------	--------

D1200mm

1400	1200	1106	1	SPL/P-12/14	SPL/P-12/14-B	£1,271
1600	1200	1106	1	SPL/P-12/16	SPL/P-12/16-B	£1,307
1800	1200	1106	1	SPL/P-12/18	SPL/P-12/18-B	£1,337
2000	1200	1106	1	SPL/P-12/20	SPL/P-12/20-B	£1,367
2400	1200	1106	1	SPL/P-12/24	SPL/P-12/24-B	£1,457
3000	1200	1106	2	SPL/P-12/30	SPL/P-12/30-B	£2,053
3600	1200	1106	2	SPL/P-12/36	SPL/P-12/36-B	£2,194
4000	1200	1106	2	SPL/P-12/40	SPL/P-12/40-B	£2,254

DOUBLE CABLE TRAYS

Size	Description	Code	Retail
850W	Suits 1400 & 1500 Rail Sets	CB-CT-10	£63
1050W	Suits 1600 & 1900 Rail Sets	CB-CT-12-15	£69
1450W	Suits 2000 & 2200 Rail Sets	CB-CT-16-18	£115



Splinta Connekt Breakout Tables

Poseur Table - Rectangle

W	D	H	Product Code	Retail
Oak Leg				
1400	800	1106	SPL/P-14/8-O	£1,097
1600	800	1106	SPL/P-16/8-O	£1,123
1800	800	1106	SPL/P-18/8-O	£1,144
2000	800	1106	SPL/P-20/8-O	£1,166
2200	800	1106	SPL/P-22/8-O	£1,197
2400	800	1106	SPL/P-24/8-O	£1,212
Black Leg				
1400	800	1106	SPL/P-14/8-B	£1,097
1600	800	1106	SPL/P-16/8-B	£1,123
1800	800	1106	SPL/P-18/8-B	£1,144
2000	800	1106	SPL/P-20/8-B	£1,166
2200	800	1106	SPL/P-22/8-B	£1,197
2400	800	1106	SPL/P-24/8-B	£1,212



Poseur Table - Square

W	D	H	Product Code	Retail
Oak Leg				
1200	1200	1106	SPL/P-12/12-O	£1,237
Black Leg				
1200	1200	1106	SPL/P-12/12-B	£1,237



Poseur Table - Round

Diameter	H	Product Code	Retail
Oak Leg			
1400	1106	SPL/P-1400-O	£1,291
Black Leg			
1400	1106	SPL/P-1400-B	£1,291



Splinta One Breakout Tables

Dining - Round

Diameter	Height	Product Code	Retail
Oak Leg			
800	740	SPL/D-800-O	£589
1000	740	SPL/D-1000-O	£612
1200	740	SPL/D-1200-O	£692
1400	740	SPL/D-1400-O	£734
1600	740	SPL/D-1600-O	£782
Black Leg			
800	740	SPL/D-800-B	£589
1000	740	SPL/D-1000-B	£612
1200	740	SPL/D-1200-B	£692
1400	740	SPL/D-1400-B	£734
1600	740	SPL/D-1600-B	£782



Dining Table - Square

W	D	H	Product Code	Retail
Oak Leg				
800	800	740	SPL/D-8/8-O	£577
1000	1000	740	SPL/D-10/10-O	£600
1200	1200	740	SPL/D-12/12-O	£680
1400	1400	740	SPL/D-14/14-O	£722
1600	1600	740	SPL/D-16/16-O	£770
Black Leg				
800	800	740	SPL/D-8/8-B	£577
1000	1000	740	SPL/D-10/10-B	£600
1200	1200	740	SPL/D-12/12-B	£680
1400	1400	740 </td <td>SPL/D-14/14-B</td> <td>£722</td>	SPL/D-14/14-B	£722
1600	1600	740	SPL/D-16/16-B	£770



Coffee Tables

W	D	H	Product Code	Retail
Square				
800	800	455	OAK SPL/C-8/8-O	£406
800	800	455	BLACK SPL/C-8/8-B	£406
Rectangle				
1000	500	455	OAK SPL/C-10/5-O	£398
1200	600	455	OAK SPL/C-12/6-O	£418
1000	500	455	BLACK SPL/C-10/5-B	£398
1200	600	455	BLACK SPL/C-12/6-B	£418
Round				
600dia	455	OAK SPL/C-600-O	£322	
800dia	455	OAK SPL/C-800-O	£339	
600dia	455	BLACK SPL/C-600-B	£322	
800dia	455	BLACK SPL/C-800-B	£339	



Splinta Meeting Tables with Steel Legs



SPLINTA Round Steel is a modular meeting/boardroom table system. Consisting of 38mm round steel legs and a series of connecting rails to construct a rigid, highly stable underframe. The slimline profile of the connecting rails increase knee space around the entire perimeter of the table and cleverly designed intermediate legs provide support on long spans and assist when splicing together multiple table tops for large configurations.

ROUND STEEL LEGS

W	D	H	Tops	Silver Leg	White Leg	Black Leg	Retail
D1000mm							
1200	1000	740	1	SPL-10/12/RND-S	SPL-10/12/RND-W	SPL-10/12/RND-B	£779
1400	1000	740	1	SPL-10/14/RND-S	SPL-10/14/RND-W	SPL-10/14/RND-B	£803
1600	1000	740	1	SPL-10/16/RND-S	SPL-10/16/RND-W	SPL-10/16/RND-B	£824
1800	1000	740	1	SPL-10/18/RND-S	SPL-10/18/RND-W	SPL-10/18/RND-B	£848
2000	1000	740	1	SPL-10/20/RND-S	SPL-10/20/RND-W	SPL-10/20/RND-B	£876
2400	1000	740	1	SPL-10/24/RND-S	SPL-10/24/RND-W	SPL-10/24/RND-B	£940
3000	1000	740	2	SPL-10/30/RND-S	SPL-10/30/RND-W	SPL-10/30/RND-B	£1,378
3600	1000	740	2	SPL-10/36/RND-S	SPL-10/36/RND-W	SPL-10/36/RND-B	£1,436
4000	1000	740	2	SPL-10/40/RND-S	SPL-10/40/RND-W	SPL-10/40/RND-B	£1,492
D1200mm							
1200	1200	740	1	SPL-12/12/RND-S	SPL-12/12/RND-W	SPL-12/12/RND-B	£802
1400	1200	740	1	SPL-12/14/RND-S	SPL-12/14/RND-W	SPL-12/14/RND-B	£829
1600	1200	740	1	SPL-12/16/RND-S	SPL-12/16/RND-W	SPL-12/16/RND-B	£854
1800	1200	740	1	SPL-12/18/RND-S	SPL-12/18/RND-W	SPL-12/18/RND-B	£881
2000	1200	740	1	SPL-12/20/RND-S	SPL-12/20/RND-W	SPL-12/20/RND-B	£912
2400	1200	740	1	SPL-12/24/RND-S	SPL-12/24/RND-W	SPL-12/24/RND-B	£982
3000	1200	740	2	SPL-12/30/RND-S	SPL-12/30/RND-W	SPL-12/30/RND-B	£1,381
3600	1200	740	2	SPL-12/36/RND-S	SPL-12/36/RND-W	SPL-12/36/RND-B	£1,499
4000	1200	740	2	SPL-12/40/RND-S	SPL-12/40/RND-W	SPL-12/40/RND-B	£1,561
D1400mm							
1400	1400	740	1	SPL-14/14/RND-S	SPL-14/14/RND-W	SPL-14/14/RND-B	£860
1600	1400	740	1	SPL-14/16/RND-S	SPL-14/16/RND-W	SPL-14/16/RND-B	£888
1800	1400	740	1	SPL-14/18/RND-S	SPL-14/18/RND-W	SPL-14/18/RND-B	£919
2000	1400	740	1	SPL-14/20/RND-S	SPL-14/20/RND-W	SPL-14/20/RND-B	£953
2400	1400	740	1	SPL-14/24/RND-S	SPL-14/24/RND-W	SPL-14/24/RND-B	£1,030
3000	1400	740	2	SPL-14/30/RND-S	SPL-14/30/RND-W	SPL-14/30/RND-B	£1,433
3600	1400	740	2	SPL-14/36/RND-S	SPL-14/36/RND-W	SPL-14/36/RND-B	£1,559
4000	1400	740	2	SPL-14/40/RND-S	SPL-14/40/RND-W	SPL-14/40/RND-B	£1,627

Splinta Meeting Tables with Steel Legs

W	D	H	Tops	Silver Leg	White Leg	Black Leg	Retail
D1600mm							
1600	1600	740	1	SPL-16/16/RND-S	SPL-16/16/RND-W	SPL-16/16/RND-B	£919
1800	1600	740	1	SPL-16/18/RND-S	SPL-16/18/RND-W	SPL-16/18/RND-B	£953
2000	1600	740	1	SPL-16/20/RND-S	SPL-16/20/RND-W	SPL-16/20/RND-B	£991
2400	1600	740	1	SPL-16/24/RND-S	SPL-16/24/RND-W	SPL-16/24/RND-B	£1,074
3000	1600	740	2	SPL-16/30/RND-S	SPL-16/30/RND-W	SPL-16/30/RND-B	£1,480
3600	1600	740	2	SPL-16/36/RND-S	SPL-16/36/RND-W	SPL-16/36/RND-B	£1,623
4000	1600	740	2	SPL-16/40/RND-S	SPL-16/40/RND-W	SPL-16/40/RND-B	£1,698



SPLINTA Rectangle Steel is a modular meeting/boardroom table system. Consisting of 80mm x 30mm steel legs and a series of connecting rails to construct a rigid, highly stable underframe. The slimline profile of the connecting rails increase knee space around the entire perimeter of the table and cleverly designed intermediate legs provide support on long spans and assist when splicing together multiple table tops for large configurations.

RECTANGULAR STEEL LEG

W	D	H	Tops	Silver Leg	White Leg	Black Leg	Retail
D1000mm							
1200	1000	740	1	SPL-10/12/REC-S	SPL-10/12/REC-W	SPL-10/12/REC-B	£817
1400	1000	740	1	SPL-10/14/REC-S	SPL-10/14/REC-W	SPL-10/14/REC-B	£842
1600	1000	740	1	SPL-10/16/REC-S	SPL-10/16/REC-W	SPL-10/16/REC-B	£863
1800	1000	740	1	SPL-10/18/REC-S	SPL-10/18/REC-W	SPL-10/18/REC-B	£887
2000	1000	740	1	SPL-10/20/REC-S	SPL-10/20/REC-W	SPL-10/20/REC-B	£915
2400	1000	740	1	SPL-10/24/REC-S	SPL-10/24/REC-W	SPL-10/24/REC-B	£978
3000	1000	740	2	SPL-10/30/REC-S	SPL-10/30/REC-W	SPL-10/30/REC-B	£1,436
3600	1000	740	2	SPL-10/36/REC-S	SPL-10/36/REC-W	SPL-10/36/REC-B	£1,494
4000	1000	740	2	SPL-10/40/REC-S	SPL-10/40/REC-W	SPL-10/40/REC-B	£1,550

D1200mm

1200	1200	740	1	SPL-12/12/REC-S	SPL-12/12/REC-W	SPL-12/12/REC-B	£840
1400	1200	740	1	SPL-12/14/REC-S	SPL-12/14/REC-W	SPL-12/14/REC-B	£868
1600	1200	740	1	SPL-12/16/REC-S	SPL-12/16/REC-W	SPL-12/16/REC-B	£892
1800	1200	740	1	SPL-12/18/REC-S	SPL-12/18/REC-W	SPL-12/18/REC-B	£920
2000	1200	740	1	SPL-12/20/REC-S	SPL-12/20/REC-W	SPL-12/20/REC-B	£951
2400	1200	740	1	SPL-12/24/REC-S	SPL-12/24/REC-W	SPL-12/24/REC-B	£1,021
3000	1200	740	2	SPL-12/30/REC-S	SPL-12/30/REC-W	SPL-12/30/REC-B	£1,439
3600	1200	740	2	SPL-12/36/REC-S	SPL-12/36/REC-W	SPL-12/36/REC-B	£1,557
4000	1200	740	2	SPL-12/40/REC-S	SPL-12/40/REC-W	SPL-12/40/REC-B	£1,619

Splinta Meeting Tables with Steel Legs

W	D	H	Tops	Silver Leg	White Leg	Black Leg	Retail
D1400mm							
1400	1400	740	1	SPL-14/14/REC-S	SPL-14/14/REC-W	SPL-14/14/REC-B	£899
1600	1400	740	1	SPL-14/16/REC-S	SPL-14/16/REC-W	SPL-14/16/REC-B	£927
1800	1400	740	1	SPL-14/18/REC-S	SPL-14/18/REC-W	SPL-14/18/REC-B	£958
2000	1400	740	1	SPL-14/20/REC-S	SPL-14/20/REC-W	SPL-14/20/REC-B	£992
2400	1400	740	1	SPL-14/24/REC-S	SPL-14/24/REC-W	SPL-14/24/REC-B	£1,069
3000	1400	740	2	SPL-14/30/REC-S	SPL-14/30/REC-W	SPL-14/30/REC-B	£1,491
3600	1400	740	2	SPL-14/36/REC-S	SPL-14/36/REC-W	SPL-14/36/REC-B	£1,617
4000	1400	740	2	SPL-14/40/REC-S	SPL-14/40/REC-W	SPL-14/40/REC-B	£1,686

D1600mm							
1600	1600	740	1	SPL-16/16/REC-S	SPL-16/16/REC-W	SPL-16/16/REC-B	£957
1600	1800	740	1	SPL-16/18/REC-S	SPL-16/18/REC-W	SPL-16/18/REC-B	£992
1600	2000	740	1	SPL-16/20/REC-S	SPL-16/20/REC-W	SPL-16/20/REC-B	£1,029
1600	2400	740	1	SPL-16/24/REC-S	SPL-16/24/REC-W	SPL-16/24/REC-B	£1,113
1600	3000	740	1	SPL-16/30/REC-S	SPL-16/30/REC-W	SPL-16/30/REC-B	£1,539
1600	3600	740	1	SPL-16/36/REC-S	SPL-16/36/REC-W	SPL-16/36/REC-B	£1,681
1600	4000	740	2	SPL-16/40/REC-S	SPL-16/40/REC-W	SPL-16/40/REC-B	£1,756



NEW RAL COLOURS AVAILABLE
SEE PAGE 4 FOR FULL RANGE OF COLOURS AND PRICES



Splinta SIT



Type	H	Diameter	D	Fabric Band	Natural Oak Legs	Black Oak Legs	Retail
------	---	----------	---	-------------	------------------	----------------	--------

Low Stools

Plain	500	375 dia		Band B	SP-SPS-LSTL-B	SPS-LSTL-BLK-B	£344
	500	375 dia		Band C	SP-SPS-LSTL-C	SPS-LSTL-BLK-C	£357
	500	375 dia		Band D	SP-SPS-LSTL-D	SPS-LSTL-BLK-D	£393
Button	500	375 dia		Band B	SP-SPS-LSTL-BTN-B	SPS-LSTL-BTN-BLK-B	£384
	500	375 dia		Band C	SP-SPS-LSTL-BTN-C	SPS-LSTL-BTN-BLK-C	£400
	500	375 dia		Band D	SP-SPS-LSTL-BTN-D	SPS-LSTL-BTN-BLK-D	£446
Sewn	500	375 dia		Band B	SP-SPS-LSTL-SBT-B	SPS-LSTL-SBT-BLK-B	£401
	500	375 dia		Band C	SP-SPS-LSTL-SBT-C	SPS-LSTL-SBT-BLK-C	£419
	500	375 dia		Band D	SP-SPS-LSTL-SBT-D	SPS-LSTL-SBT-BLK-D	£467
Sewn Button	500	375 dia		Band B	SP-SPS-LSTL-BSBT-B	SPS-LSTL-BSBT-BLK-B	£426
	500	375 dia		Band C	SP-SPS-LSTL-BSBT-C	SPS-LSTL-BSBT-BLK-C	£444
	500	375 dia		Band D	SP-SPS-LSTL-BSBT-D	SPS-LSTL-BSBT-BLK-D	£492

High Stools

Plain	830	375 dia		Band B	SP-SPS-HSTL-B	SPS-HSTL-BLK-B	£516
	830	375 dia		Band C	SP-SPS-HSTL-C	SPS-HSTL-BLK-C	£529
	830	375 dia		Band D	SP-SPS-HSTL-D	SPS-HSTL-BLK-D	£565
Button	830	375 dia		Band B	SP-SPS-HSTL-BTN-B	SPS-HSTL-BTN-BLK-B	£581
	830	375 dia		Band C	SP-SPS-HSTL-BTN-C	SPS-HSTL-BTN-BLK-C	£597
	830	375 dia		Band D	SP-SPS-HSTL-BTN-D	SPS-HSTL-BTN-BLK-D	£641
Sewn Border	830	375 dia		Band B	SP-SPS-HSTL-SBT-B	SPS-HSTL-SBT-BLK-B	£605
	830	375 dia		Band C	SP-SPS-HSTL-SBT-C	SPS-HSTL-SBT-BLK-C	£623
	830	375 dia		Band D	SP-SPS-HSTL-SBT-D	SPS-HSTL-SBT-BLK-D	£669
Sewn Button	830	375 dia		Band B	SP-SPS-HSTL-BSBT-B	SPS-HSTL-BSBT-BLK-B	£630
	830	375 dia		Band C	SP-SPS-HSTL-BSBT-C	SPS-HSTL-BSBT-BLK-C	£647
	830	375 dia		Band D	SP-SPS-HSTL-BSBT-D	SPS-HSTL-BSBT-BLK-D	£693

Type	H	W	D	Fabric Band	Natural Oak Legs	Black Oak Legs	Retail
------	---	---	---	-------------	------------------	----------------	--------

Low Bench

Plain	500	1180	375	Band B	SP-SPS-BEN-B	SPS-BEN-BLK-B	£531
	500	1180	375	Band C	SP-SPS-BEN-C	SPS-BEN-BLK-C	£564
	500	1180	375	Band D	SP-SPS-BEN-D	SPS-BEN-BLK-D	£581
Button	500	1180	375	Band B	SP-SPS-BEN-BTN-B	SPS-BEN-BTN-BLK-B	£649
	500	1180	375	Band C	SP-SPS-BEN-BTN-C	SPS-BEN-BTN-BLK-C	£689
	500	1180	375	Band D	SP-SPS-BEN-BTN-D	SPS-BEN-BTN-BLK-D	£711
Sewn Boarder	500	1180	375	Band B	SP-SPS-BEN-SBT-B	SPS-BEN-SBT-BLK-B	£608
	500	1180	375	Band C	SP-SPS-BEN-SBT-C	SPS-BEN-SBT-BLK-C	£641
	500	1180	375	Band D	SP-SPS-BEN-SBT-D	SPS-BEN-SBT-BLK-D	£687
Sewn Button	500	1180	375	Band B	SP-SPS-BEN-BSBT-B	SPS-BEN-BSBT-BLK-B	£682
	500	1180	375	Band C	SP-SPS-BEN-BSBT-C	SPS-BEN-BSBT-BLK-C	£715
	500	1180	375	Band D	SP-SPS-BEN-BSBT-D	SPS-BEN-BSBT-BLK-D	£761

High Bench

Plain	830	1180	375	Band B	SP-SPS-HBEN-B	SPS-HBEN-BLK-B	£693
	830	1180	375	Band C	SP-SPS-HBEN-C	SPS-HBEN-BLK-C	£710
	830	1180	375	Band D	SP-SPS-HBEN-D	SPS-HBEN-BLK-D	£757
Button	830	1180	375	Band B	SP-SPS-HBEN-BTN-B	SPS-HBEN-BTN-BLK-B	£847
	830	1180	375	Band C	SP-SPS-HBEN-BTN-C	SPS-HBEN-BTN-BLK-C	£868
	830	1180	375	Band D	SP-SPS-HBEN-BTN-D	SPS-HBEN-BTN-BLK-D	£926
Sewn Boarder	830	1180	375	Band B	SP-SPS-HBEN-SBT-B	SPS-HBEN-SBT-BLK-B	£811
	830	1180	375	Band C	SP-SPS-HBEN-SBT-C	SPS-HBEN-SBT-BLK-C	£832
	830	1180	375	Band D	SP-SPS-HBEN-SBT-D	SPS-HBEN-SBT-BLK-D	£890
Sewn Button	830	1180	375	Band B	SP-SPS-HBEN-BSBT-B	SPS-HBEN-BSBT-BLK-B	£885
	830	1180	375	Band C	SP-SPS-HBEN-BSBT-C	SPS-HBEN-BSBT-BLK-C	£906
	830	1180	375	Band D	SP-SPS-HBEN-BSBT-D	SPS-HBEN-BSBT-BLK-D	£964



Plain Seat



Button Seat



Sewn Boarder Seat



Sewn Boarder Button Seat

Band B	Band C	Band D
Standard Top Fabrics	Standard Top Fabrics	Standard Top Fabrics
Camira Rivet Era	Camira Xtreme Manhattan Urban Canopy Chateau Main Line Plus	Camira Main Line Flax Blazer Synergy Aquarius Patina Oceanic
Sewn Border Top Fabrics	Sewn Border Top Fabrics	Sewn Border Top Fabrics
Camira Era	Camira Xtreme X2 Manhattan Urban Canopy	Camira Main Line Flax Blazer Synergy Aquarius Vita Aspect Patina Intervene Oceanic



Flip Top Tables



NEW RAL COLOURS AVAILABLE
SEE PAGE 4 FOR FULL COLOUR RANGE AND PRICES

Rectangle

W	D	H	Silver	White	Black	Retail
Flat Packed						
1000	600	720	FTR10/6-S	FTR10/6-W	FTR10/6-B	£450
1200	600	720	FTR12/6-S	FTR12/6-W	FTR12/6-B	£457
1400	600	720	FTR14/6-S	FTR14/6-W	FTR14/6-B	£481
1600	600	720	FTR16/6-S	FTR16/6-W	FTR16/6-B	£493
1800	600	720	FTR18/6-S	FTR18/6-W	FTR18/6-B	£506
2000	600	720	FTR20/6-S	FTR20/6-W	FTR20/6-B	£543
1000	800	720	FTR10/8-S	FTR10/8-W	FTR10/8-B	£479
1200	800	720	FTR12/8-S	FTR12/8-W	FTR12/8-B	£488
1400	800	720	FTR14/8-S	FTR14/8-W	FTR14/8-B	£519
1600	800	720	FTR16/8-S	FTR16/8-W	FTR16/8-B	£534
1800	800	720	FTR18/8-S	FTR18/8-W	FTR18/8-B	£549
2000	800	720	FTR20/8-S	FTR20/8-W	FTR20/8-B	£589
Assembled						
1000	600	720	FTR10/6-SA	FTR10/6-WA	FTR10/6-BA	£480
1200	600	720	FTR12/6-SA	FTR12/6-WA	FTR12/6-BA	£487
1400	600	720	FTR14/6-SA	FTR14/6-WA	FTR14/6-BA	£511
1600	600	720	FTR16/6-SA	FTR16/6-WA	FTR16/6-BA	£523
1800	600	720	FTR18/6-SA	FTR18/6-WA	FTR18/6-BA	£536
2000	600	720	FTR20/6-SA	FTR20/6-WA	FTR20/6-BA	£573
1000	800	720	FTR10/8-SA	FTR10/8-WA	FTR10/8-BA	£509
1200	800	720	FTR12/8-SA	FTR12/8-WA	FTR12/8-BA	£518
1400	800	720	FTR14/8-SA	FTR14/8-WA	FTR14/8-BA	£549
1600	800	720	FTR16/8-SA	FTR16/8-WA	FTR16/8-BA	£564
1800	800	720	FTR18/8-SA	FTR18/8-WA	FTR18/8-BA	£579
2000	800	720	FTR20/8-SA	FTR20/8-WA	FTR20/8-BA	£619

Flip Top Tables

Circular

Diameter	H	Silver	White	Black	Retail
Flat Packed					
1000	720	FTC/10-S	FTC/10-W	FTC/10-B	£523
1200	720	FTC/12-S	FTC/12-W	FTC/12-B	£575
Assembled					
1000	720	FTC/10-SA	FTC/10-WA	FTC/10-BA	£550
1200	720	FTC/12-SA	FTC/12-WA	FTC/12-BA	£602

Semi-Circular

Diameter	D	H	Silver	White	Black	Retail
Flat Packed						
1200	600	720	FTS/12-S	FTS/12-W	FTS/12-B	£515
1400	700	720	FTS/14-S	FTS/14-W	FTS/14-B	£537
1600	800	720	FTS/16-S	FTS/16-W	FTS/16-B	£576
Assembled						
1200	600	720	FTS/12-SA	FTS/12-WA	FTS/12-BA	£542
1400	700	720	FTS/14-SA	FTS/14-WA	FTS/14-BA	£564
1600	800	720	FTS/16-SA	FTS/16-WA	FTS/16-BA	£603

Trapezoidal D600mm

W	D	H	Silver	White	Black	Retail
Flat Packed						
1200	600	720	FTT/12/6-S	FTT/12/6-W	FTT/12/6-B	£705
1400	600	720	FTT/14/6-S	FTT/14/6-W	FTT/14/6-B	£734
1600	600	720	FTT/16/6-S	FTT/16/6-W	FTT/16/6-B	£769
1200	800	720	FTT/12/8-S	FTT/12/8-W	FTT/12/8-B	£760
1400	800	720	FTT/14/8-S	FTT/14/8-W	FTT/14/8-B	£779
1600	800	720	FTT/16/8-S	FTT/16/8-W	FTT/16/8-B	£798
Assembled						
1200	600	720	FTT/12/6-SA	FTT/12/6-WA	FTT/12/6-BA	£732
1400	600	720	FTT/14/6-SA	FTT/14/6-WA	FTT/14/6-BA	£761
1600	600	720	FTT/16/6-SA	FTT/16/6-WA	FTT/16/6-BA	£796
1200	800	720	FTT/12/8-SA	FTT/12/8-WA	FTT/12/8-BA	£787
1400	800	720	FTT/14/8-SA	FTT/14/8-WA	FTT/14/8-BA	£806
1600	800	720	FTT/16/8-SA	FTT/16/8-WA	FTT/16/8-BA	£825



All of our flip top tables are supplied with this style foot

Pillar Tables - Square



NEW RAL COLOURS AVAILABLE
SEE PAGE 4 FOR FULL RANGE OF COLOURS AND PRICES



Coffee Tables

W	D	H	Pillar	Silver	White	Black	Retail
No Cable Management							
600	600	425	80dia	PS-CF-6/6-S	PS-CF-6/6-W	PS-CF-6/6-B	£250
800	800	425	80dia	PS-CF-8/8-S	PS-CF-8/8-W	PS-CF-8/8-B	£267
1000	1000	425	80dia	PS-CF-10/10-S	PS-CF-10/10-W	PS-CF-10/10-B	£412
1200	1200	425	80dia	PS-CF-12/12-S	PS-CF-12/12-W	PS-CF-12/12-B	£464
With Cable Management							
600	600	425	102dia	PS-CF-6/6/CM-S	PS-CF-6/6/CM-W	PS-CF-6/6/CM-B	£299
800	800	425	102dia	PS-CF-8/8/CM-S	PS-CF-8/8/CM-W	PS-CF-8/8/CM-B	£316
1000	1000	425	102dia	PS-CF-10/10/CM-S	PS-CF-10/10/CM-W	PS-CF-10/10/CM-B	£473
1200	1200	425	102dia	PS-CF-12/12/CM-S	PS-CF-12/12/CM-W	PS-CF-12/12/CM-B	£525

Dining Tables

W	D	H	Pillar	Silver	White	Black	Retail
No Cable Management							
600	600	720	80dia	PS-DN-6/6-S	PS-DN-6/6-W	PS-DN-6/6-B	£273
800	800	720	80dia	PS-DN-8/8-S	PS-DN-8/8-W	PS-DN-8/8-B	£291
1000	1000	720	80dia	PS-DN-10/10-S	PS-DN-10/10-W	PS-DN-10/10-B	£435
1200	1200	720	80dia	PS-DN-12/12-S	PS-DN-12/12-W	PS-DN-12/12-B	£487
With Cable Management							
600	600	720	102dia	PS-DN-6/6/CM-S	PS-DN-6/6/CM-W	PS-DN-6/6/CM-B	£319
800	800	720	102dia	PS-DN-8/8/CM-S	PS-DN-8/8/CM-W	PS-DN-8/8/CM-B	£337
1000	1000	720	102dia	PS-DN-10/10/CM-S	PS-DN-10/10/CM-W	PS-DN-10/10/CM-B	£494
1200	1200	720	102dia	PS-DN-12/12/CM-S	PS-DN-12/12/CM-W	PS-DN-12/12/CM-B	£546

Poseur Tables

W	D	H	Pillar	Silver	White	Black	Retail
No Cable Management							
600	600	1100	80dia	PS-PS-6/6-S	PS-PS-6/6-W	PS-PS-6/6-B	£289
800	800	1100	80dia	PS-PS-8/8-S	PS-PS-8/8-W	PS-PS-8/8-B	£306
1000	1000	1100	80dia	PS-PS-10/10-S	PS-PS-10/10-W	PS-PS-10/10-B	£451
1200	1200	1100	80dia	PS-PS-12/12-S	PS-PS-12/12-W	PS-PS-12/12-B	£503
With Cable Management							
600	600	1100	102dia	PS-PS-6/6/CM-S	PS-PS-6/6/CM-W	PS-PS-6/6/CM-B	£343
800	800	1100	102dia	PS-PS-8/8/CM-S	PS-PS-8/8/CM-W	PS-PS-8/8/CM-B	£361
1000	1000	1100	102dia	PS-PS-10/10/CM-S	PS-PS-10/10/CM-W	PS-PS-10/10/CM-B	£518
1200	1200	1100	102dia	PS-PS-12/12/CM-S	PS-PS-12/12/CM-W	PS-PS-12/12/CM-B	£570

Pillar Tables - Round

Coffee Tables

Dia	H	Pillar	Silver	White	Black	Retail
No Cable Management						
600	425	80dia	PR-CF-6-S	PR-CF-6-W	PR-CF-6-B	£279
800	425	80dia	PR-CF-8-S	PR-CF-8-W	PR-CF-8-B	£296
1000	425	80dia	PR-CF-10-S	PR-CF-10-W	PR-CF-10-B	£456
1200	425	80dia	PR-CF-12-S	PR-CF-12-W	PR-CF-12-B	£508
With Cable Management						
600	425	102dia	PR-CF-6/CM-S	PR-CF-6/CM-W	PR-CF-6/CM-B	£327
800	425	102dia	PR-CF-8/CM-S	PR-CF-8/CM-W	PR-CF-8/CM-B	£345
1000	425	102dia	PR-CF-10/CM-S	PR-CF-10/CM-W	PR-CF-10/CM-B	£525
1200	425	102dia	PR-CF-12/CM-S	PR-CF-12/CM-W	PR-CF-12/CM-B	£577

Dining Tables

Dia	H	Pillar	Silver	White	Black	Retail
No Cable Management						
600	720	80dia	PR-DN-6-S	PR-DN-6-W	PR-DN-6-B	£302
800	720	80dia	PR-DN-8-S	PR-DN-8-W	PR-DN-8-B	£320
1000	720	80dia	PR-DN-10-S	PR-DN-10-W	PR-DN-10-B	£479
1200	720	80dia	PR-DN-12-S	PR-DN-12-W	PR-DN-12-B	£531
With Cable Management						
600	720	102dia	PR-DN-6/CM-S	PR-DN-6/CM-W	PR-DN-6/CM-B	£348
800	720	102dia	PR-DN-8/CM-S	PR-DN-8/CM-W	PR-DN-8/CM-B	£366
1000	720	102dia	PR-DN-10/CM-S	PR-DN-10/CM-W	PR-DN-10/CM-B	£546
1200	720	102dia	PR-DN-12/CM-S	PR-DN-12/CM-W	PR-DN-12/CM-B	£598

Poseur Tables

Dia	H	Pillar	Silver	White	Black	Retail
No Cable Management						
600	1100	80dia	PR-PS-6-S	PR-PS-6-W	PR-PS-6-B	£318
800	1100	80dia	PR-PS-8-S	PR-PS-8-W	PR-PS-8-B	£336
1000	1100	80dia	PR-PS-10-S	PR-PS-10-W	PR-PS-10-B	£495
1200	1100	80dia	PR-PS-12-S	PR-PS-12-W	PR-PS-12-B	£547
With Cable Management						
600	1100	102dia	PR-PS-6/CM-S	PR-PS-6/CM-W	PR-PS-6/CM-B	£372
800	1100	102dia	PR-PS-8/CM-S	PR-PS-8/CM-W	PR-PS-8/CM-B	£390
1000	1100	102dia	PR-PS-10/CM-S	PR-PS-10/CM-W	PR-PS-10/CM-B	£570
1200	1100	102dia	PR-PS-12/CM-S	PR-PS-12/CM-W	PR-PS-12/CM-B	£622

Luna SIT



NEW RAL COLOURS AVAILABLE
SEE PAGE 3 FOR FULL COLOUR RANGE AND PRICES



Seat	Type	Fabric Band	Seat Height	Seat Diameter	Silver	White	Black	Retail
------	------	-------------	-------------	---------------	--------	-------	-------	--------

Low Stools

Plain	B	500	390	LU-EBLS-PLN-BS	LU-EBLS-PLN-BW	LU-EBLS-PLN-BB	£302
	C	500	390	LU-EBLS-PLN-CS	LU-EBLS-PLN-CW	LU-EBLS-PLN-CB	£313
	D	500	390	LU-EBLS-PLN-DS	LU-EBLS-PLN-DW	LU-EBLS-PLN-DB	£351
Button	B	500	390	LU-EBLS-BTN-BS	LU-EBLS-BTN-BW	LU-EBLS-BTN-BB	£326
	C	500	390	LU-EBLS-BTN-CS	LU-EBLS-BTN-CW	LU-EBLS-BTN-CB	£338
	D	500	390	LU-EBLS-BTN-DS	LU-EBLS-BTN-DW	LU-EBLS-BTN-DB	£375
Sewn	B	500	390	LU-EBLS-SBT-BS	LU-EBLS-SBT-BW	LU-EBLS-SBT-BB	£334
	C	500	390	LU-EBLS-SBT-CS	LU-EBLS-SBT-CW	LU-EBLS-SBT-CB	£345
	D	500	390	LU-EBLS-SBT-DS	LU-EBLS-SBT-DW	LU-EBLS-SBT-DB	£383
Sewn Button	B	500	390	LU-EBLS-BSBT-BS	LU-EBLS-BSBT-BW	LU-EBLS-BSBT-BB	£358
	C	500	390	LU-EBLS-BSBT-CS	LU-EBLS-BSBT-CW	LU-EBLS-BSBT-CB	£370
	D	500	390	LU-EBLS-BSBT-DS	LU-EBLS-BSBT-DW	LU-EBLS-BSBT-DB	£407

High Stool with Wire Footrest

Plain	B	830	390	LU-RBHS-WFR-PLN-BS	LU-RBHS-WFR-PLN-BW	LU-RBHS-WFR-PLN-BB	£348
	C	830	390	LU-RBHS-WFR-PLN-CS	LU-RBHS-WFR-PLN-CW	LU-RBHS-WFR-PLN-CB	£360
	D	830	390	LU-RBHS-WFR-PLN-DS	LU-RBHS-WFR-PLN-DW	LU-RBHS-WFR-PLN-DB	£397
Button	B	830	390	LU-RBHS-WFR-BTN-BS	LU-RBHS-WFR-BTN-BW	LU-RBHS-WFR-BTN-BB	£373
	C	830	390	LU-RBHS-WFR-BTN-CS	LU-RBHS-WFR-BTN-CW	LU-RBHS-WFR-BTN-CB	£384
	D	830	390	LU-RBHS-WFR-BTN-DS	LU-RBHS-WFR-BTN-DW	LU-RBHS-WFR-BTN-DB	£422
Sewn	B	830	390	LU-RBHS-WFR-SBT-BS	LU-RBHS-WFR-SBT-BW	LU-RBHS-WFR-SBT-BB	£380
	C	830	390	LU-RBHS-WFR-SBT-CS	LU-RBHS-WFR-SBT-CW	LU-RBHS-WFR-SBT-CB	£392
	D	830	390	LU-RBHS-WFR-SBT-DS	LU-RBHS-WFR-SBT-DW	LU-RBHS-WFR-SBT-DB	£429
Sewn Button	B	830	390	LU-RBHS-WFR-BSBT-BS	LU-RBHS-WFR-BSBT-BW	LU-RBHS-WFR-BSBT-BB	£405
	C	830	390	LU-RBHS-WFR-BSBT-CS	LU-RBHS-WFR-BSBT-CW	LU-RBHS-WFR-BSBT-CB	£417
	D	830	390	LU-RBHS-WFR-BSBT-DS	LU-RBHS-WFR-BSBT-DW	LU-RBHS-WFR-BSBT-DB	£454

Luna SIT

Seat	Type	Fabric Band	Seat Height	Seat Diameter	Silver	White	Black	Retail
High Stool with Tubular Footrest								
Plain	B		830	390	LU-RBHS-TFR-PLN-BS	LU-RBHS-TFR-PLN-BW	LU-RBHS-TFR-PLN-BB	£357
	C		830	390	LU-RBHS-TFR-PLN-CS	LU-RBHS-TFR-PLN-CW	LU-RBHS-TFR-PLN-CB	£369
	D		830	390	LU-RBHS-TFR-PLN-DS	LU-RBHS-TFR-PLN-DW	LU-RBHS-TFR-PLN-DB	£407
Button	B		830	390	LU-RBHS-TFR-BTN-BS	LU-RBHS-TFR-BTN-BW	LU-RBHS-TFR-BTN-BB	£382
	C		830	390	LU-RBHS-TFR-BTN-CS	LU-RBHS-TFR-BTN-CW	LU-RBHS-TFR-BTN-CB	£394
	D		830	390	LU-RBHS-TFR-BTN-DS	LU-RBHS-TFR-BTN-DW	LU-RBHS-TFR-BTN-DB	£431
Sewn	B		830	390	LU-RBHS-TFR-SBT-BS	LU-RBHS-TFR-SBT-BW	LU-RBHS-TFR-SBT-BB	£390
	C		830	390	LU-RBHS-TFR-SBT-CS	LU-RBHS-TFR-SBT-CW	LU-RBHS-TFR-SBT-CB	£401
	D		830	390	LU-RBHS-TFR-SBT-DS	LU-RBHS-TFR-SBT-DW	LU-RBHS-TFR-SBT-DB	£439
Sewn Button	B		830	390	LU-RBHS-TFR-BSBT-BS	LU-RBHS-TFR-BSBT-BW	LU-RBHS-TFR-BSBT-BB	£414
	C		830	390	LU-RBHS-TFR-BSBT-CS	LU-RBHS-TFR-BSBT-CW	LU-RBHS-TFR-BSBT-CB	£426
	D		830	390	LU-RBHS-TFR-BSBT-DS	LU-RBHS-TFR-BSBT-DW	LU-RBHS-TFR-BSBT-DB	£463



Wire Footrest



Tubular Footrest



Plain Seat



Button Seat



Sewn Boarder Seat

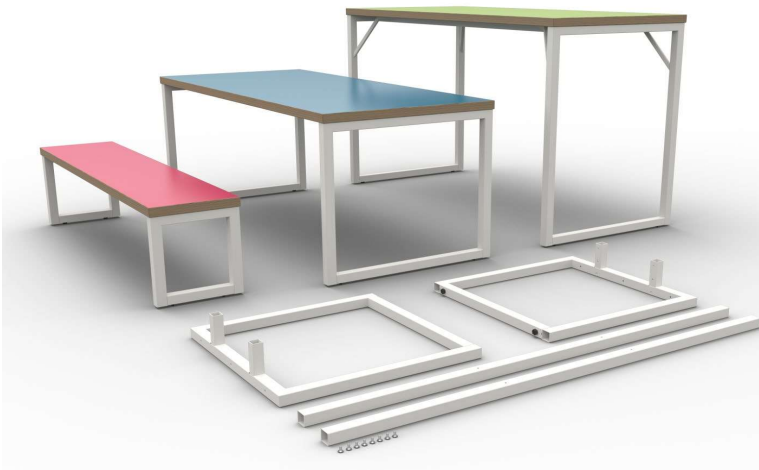


Sewn Boarder Seat with Button

Band B	Band C	Band D
Plain Top Fabrics	Plain Top Fabrics	Plain Top Fabrics
Camira Rivet Era Gravity	Camira Xtreme Manhattan Urban Canopy Chateau Main Line Plus Sprint	Camira Main Line Flax Blazer Synergy Aquarius Patina Oceanic
Sewn Border Top Fabrics	Sewn Border Top Fabrics	Sewn Border Top Fabrics
Camira Era	Camira Xtreme X2 Manhattan Urban Canopy	Camira Main Line Flax Blazer Synergy Aquarius Vita Aspect Patina Intervene Oceanic



Picnic



The PICNIC platform is a robust and sturdy system designed with 40mm x 40mm tube profile around the spigot method of assembly. The Seat ranges from 1000 to 2000mm in width at 350mm deep. The Table ranges from 1200 to 2200mm in width and 800mm deep. The Poseur legs unique triangulation design creates lateral stability and allows you to build tables that range from 1200 to 2200mm in width and 800mm deep.

Introducing an intermediate leg to the Table or Poseur range extends the possibilities to build longer configurations where the overall length can be infinite. The Poseur with intermediate leg uses an additional triangulation support to achieve great stability. POA.

W	D	H	Silver	White	Black	Quantity	Quantity	Quantity
						1-2	3-9	10 +

Seats

1000	350	410	PNS-1000-S	PNS-1000-W	PNS-1000-B	£557	£443	£342
1200	350	410	PNS-1200-S	PNS-1200-W	PNS-1200-B	£599	£478	£373
1400	350	410	PNS-1400-S	PNS-1400-W	PNS-1400-B	£624	£498	£389
1600	350	410	PNS-1600-S	PNS-1600-W	PNS-1600-B	£628	£502	£393
1800	350	410	PNS-1800-S	PNS-1800-W	PNS-1800-B	£668	£534	£417
2000	350	410	PNS-2000-S	PNS-2000-W	PNS-2000-B	£762	£611	£478



Tables

1200	800	740	PNT-12/8-S	PNT-12/8-W	PNT-12/8-B	£809	£648	£506
1400	800	740	PNT-14/8-S	PNT-14/8-W	PNT-14/8-B	£856	£690	£545
1600	800	740	PNT-16/8-S	PNT-16/8-W	PNT-16/8-B	£868	£702	£557
1800	800	740	PNT-18/8-S	PNT-18/8-W	PNT-18/8-B	£916	£742	£589
2000	800	740	PNT-20/8-S	PNT-20/8-W	PNT-20/8-B	£1,018	£826	£658
2200	800	740	PNT-22/8-S	PNT-22/8-W	PNT-22/8-B	£1,030	£838	£670



Poseurs

1200	800	1100	PNP-12/8-S	PNP-12/8-W	PNP-12/8-B	£911	£726	£564
1400	800	1100	PNP-14/8-S	PNP-14/8-W	PNP-14/8-B	£958	£769	£603
1600	800	1100	PNP-16/8-S	PNP-16/8-W	PNP-16/8-B	£970	£781	£615
1800	800	1100	PNP-18/8-S	PNP-18/8-W	PNP-18/8-B	£1,018	£820	£647
2000	800	1100	PNP-20/8-S	PNP-20/8-W	PNP-20/8-B	£1,120	£905	£716
2200	800	1100	PNP-22/8-S	PNP-22/8-W	PNP-22/8-B	£1,132	£916	£728



NEW RAL COLOURS AVAILABLE
SEE PAGE 4 FOR FULL RANGE OF COLOURS AND PRICES

Picnic T00



The PICNIC T00 platform is a robust and sturdy system designed with a three beam assembly for greater lateral stability. The seat reanges from 1000 to 1800mm in width at 350mm deep. The table and Poseur ranges from 1000 to 1800mm in width to 800 or 1000mm deep. New RAL colours - see page 4 for full range of colours and prices.



W	D	H	Silver	White	Black	Quantity 1-2	Quantity 3-9	Quantity 10 +
---	---	---	--------	-------	-------	-----------------	-----------------	------------------

Seats

1000	350	410	PNST-1000-S	PNST-1000-W	PNST-1000-B	£539	£434	£316
1200	350	410	PNST-1200-S	PNST-1200-W	PNST-1200-B	£576	£467	£344
1400	350	410	PNST-1400-S	PNST-1400-W	PNST-1400-B	£581	£471	£348
1600	350	410	PNST-1600-S	PNST-1600-W	PNST-1600-B	£621	£504	£372
1800	350	410	PNST-1800-S	PNST-1800-W	PNST-1800-B	£639	£521	£389



Tables

1000	800	740	PNNT-10/8-S	PNNT-10/8-W	PNNT-10/8-B	£786	£634	£460
1200	800	740	PNNT-12/8-S	PNNT-12/8-W	PNNT-12/8-B	£829	£672	£493
1400	800	740	PNNT-14/8-S	PNNT-14/8-W	PNNT-14/8-B	£857	£699	£520
1600	800	740	PNNT-16/8-S	PNNT-16/8-W	PNNT-16/8-B	£904	£739	£551
1800	800	740	PNNT-18/8-S	PNNT-18/8-W	PNNT-18/8-B	£930	£765	£576



1000	1000	740	PNNT-10/10-S	PNNT-10/10-W	PNNT-10/10-B	£861	£698	£514
1200	1000	740	PNNT-12/10-S	PNNT-12/10-W	PNNT-12/10-B	£925	£757	£568
1400	1000	740	PNNT-14/10-S	PNNT-14/10-W	PNNT-14/10-B	£941	£772	£583
1600	1000	740	PNNT-16/10-S	PNNT-16/10-W	PNNT-16/10-B	£991	£815	£617
1800	1000	740	PNNT-18/10-S	PNNT-18/10-W	PNNT-18/10-B	£1,020	£843	£645

Poseurs

1000	800	1100	PNPT-10/8-S	PNPT-10/8-W	PNPT-10/8-B	£854	£687	£499
1200	800	1100	PNPT-12/8-S	PNPT-12/8-W	PNPT-12/8-B	£897	£725	£532
1400	800	1100	PNPT-14/8-S	PNPT-14/8-W	PNPT-14/8-B	£924	£752	£559
1600	800	1100	PNPT-16/8-S	PNPT-16/8-W	PNPT-16/8-B	£972	£792	£590
1800	800	1100	PNPT-18/8-S	PNPT-18/8-W	PNPT-18/8-B	£998	£818	£615

1000	1000	1100	PNPT-10/10-S	PNPT-10/10-W	PNPT-10/10-B	£930	£752	£551
1200	1000	1100	PNPT-12/10-S	PNPT-12/10-W	PNPT-12/10-B	£994	£811	£605
1400	1000	1100	PNPT-14/10-S	PNPT-14/10-W	PNPT-14/10-B	£1,010	£826	£620
1600	1000	1100	PNPT-16/10-S	PNPT-16/10-W	PNPT-16/10-B	£1,061	£869	£654
1800	1000	1100	PNPT-18/10-S	PNPT-18/10-W	PNPT-18/10-B	£1,089	£898	£682



RESIDENTIAL FURNITURE



Our range of Residential Furniture offers a high quality, durable and flexible range of furniture suitable for schools, colleges, universities, care homes and even the home environment.

This range is constructed entirely from 18mm MFC, including backs and drawer boxes, and fitted with smooth ball bearing runners.

The durability of this range makes it perfect for any setting.

Mixing colours of the carcass, doors and drawer fronts creates a contemporary and stylish look without compromising on quality.



Residential Furniture

Single Door Wardrobe

W	D	H	Details	Product Code	Retail
Bow Handle					
500	600	1993	With top shelf and hanging rail	A-SW-A	£552
500	600	1993	With hanging rail & Drawers	A-SWD-A	£726
Bar Handle					
500	600	1993	With top shelf and hanging rail	A-SW-B	£556
500	600	1993	With hanging rail & Drawers	A-SWD-B	£740



Double Door Wardrobe

W	D	H	Details	Product Code	Retail
Bow Handle					
800	600	1993	With top shelf and hanging rail	A-DWS-A	£645
800	600	1993	With Integral shelves	A-INT-A	£812
800	600	1993	With hanging rail & Drawers	A-DWD-A	£858
Bar Handle					
800	600	1993	With top shelf and hanging rail	A-DWS-B	£654
800	600	1993	With Integral shelves	A-INT-B	£820
800	600	1993	With hanging rail & Drawers	A-DWD-B	£876



Chests of Drawers

W	D	H	Details	Product Code	Retail
Bow Handle					
500	545	734	3 drawers	A-CH5/3-A	£494
800	545	734	3 drawers	A-CH8/3-A	£583
500	545	937	4 drawers	A-CH5/4-A	£560
800	545	937	4 drawers	A-CH8/4-A	£629
800	545	1140	5 drawers	A-CH8/5-A	£660
Bar Handle					
500	545	734	3 drawers	A-CH5/3-B	£556
800	545	734	3 drawers	A-CH8/3-B	£740
500	545	937	4 drawers	A-CH5/4-B	£577
800	545	937	4 drawers	A-CH8/4-B	£646
800	545	1140	5 drawers	A-CH8/5-B	£768



Residential Furniture

Desk/Dressing Table

W	D	H	Details	Product Code	Retail
Bow Handle					
1000	545	730	3 Drawers	A-SD-A	£640
Bar Handle					
1000	545	730	3 Drawers	A-SD-B	£653

Please specify when ordering if drawers to be on left or right



Bedside Cabinets

W	D	H	Details	Product Code	Retail
400	445	531	Open	A-BC/O-A	£130
Bow Handle					
400	445	531	Cupboard	A-BC/C-A	£167
400	445	531	2 Drawers	A-BC/D-A	£242
Bar Handle					
400	445	531	Cupboard	A-BC/C-B	£171
400	445	531	2 Drawers	A-BC/D-B	£271

Please specify when ordering if hinges to be on left or right



Cupboards

W	D	H	Details	Product Code	Retail
Bow Handle					
500	545	730	Single door cupboard	A-SDC/F-A	£230
Bar Handle					
500	545	730	Single door cupboard	A-SDC/F-B	£235

Please specify when ordering if hinges to be on left or right



Residential Furniture

Wall Units

W	D	H	Details	Product Code	Retail
600	300	965	3 Tier Wall Unit	A-BK	£171



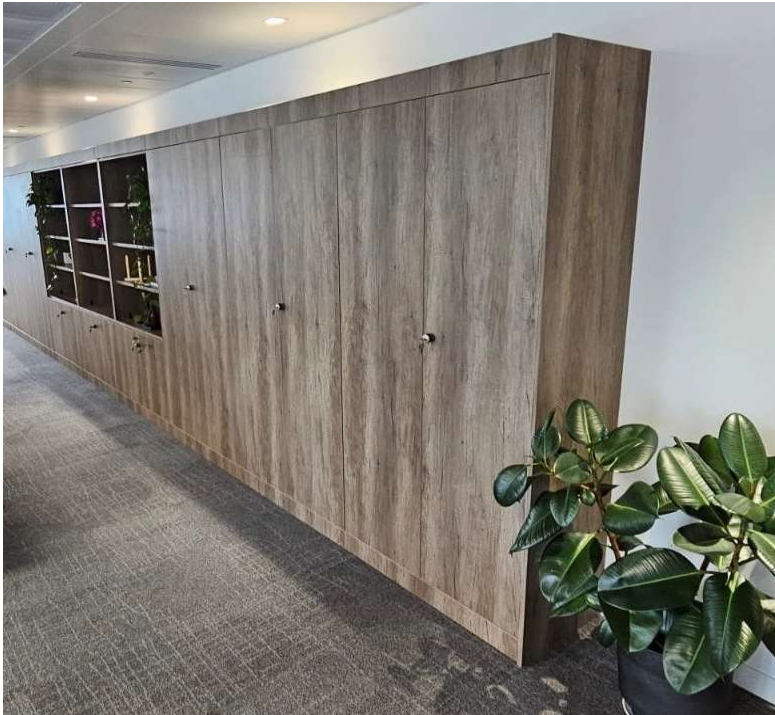
Bow Handle
L205mm



Bar Handle
L188mm
L284mm



Installations



Terms and Conditions

Guarantee

All Products in this price list have a 5-year guarantee for furniture in normal 8-hour office use.

Where furniture is used on a continuous 24-hour basis a 12-month guarantee is provided.

Note: KD Height adjustable desk frames have a 2 year guarantee.

These guarantees do not cover fair wear & tear or misuse/mistreatment of our furniture.

Dimensions and Specifications

The utmost care is taken to ensure the accuracy of dimensions.

Please note that dimensions should be considered to be approximate and that Aaron (UK) Limited cannot be held responsible for any errors or omissions.

Aaron (UK) Limited reserves the right to change dimensions and design without notification

Lead Times

Aaron (UK) Limited will at all times endeavor to deliver to estimated lead times.

However the lead-time is an estimate and under no circumstances will Aaron (UK) Limited be liable for loss due to delayed deliveries.

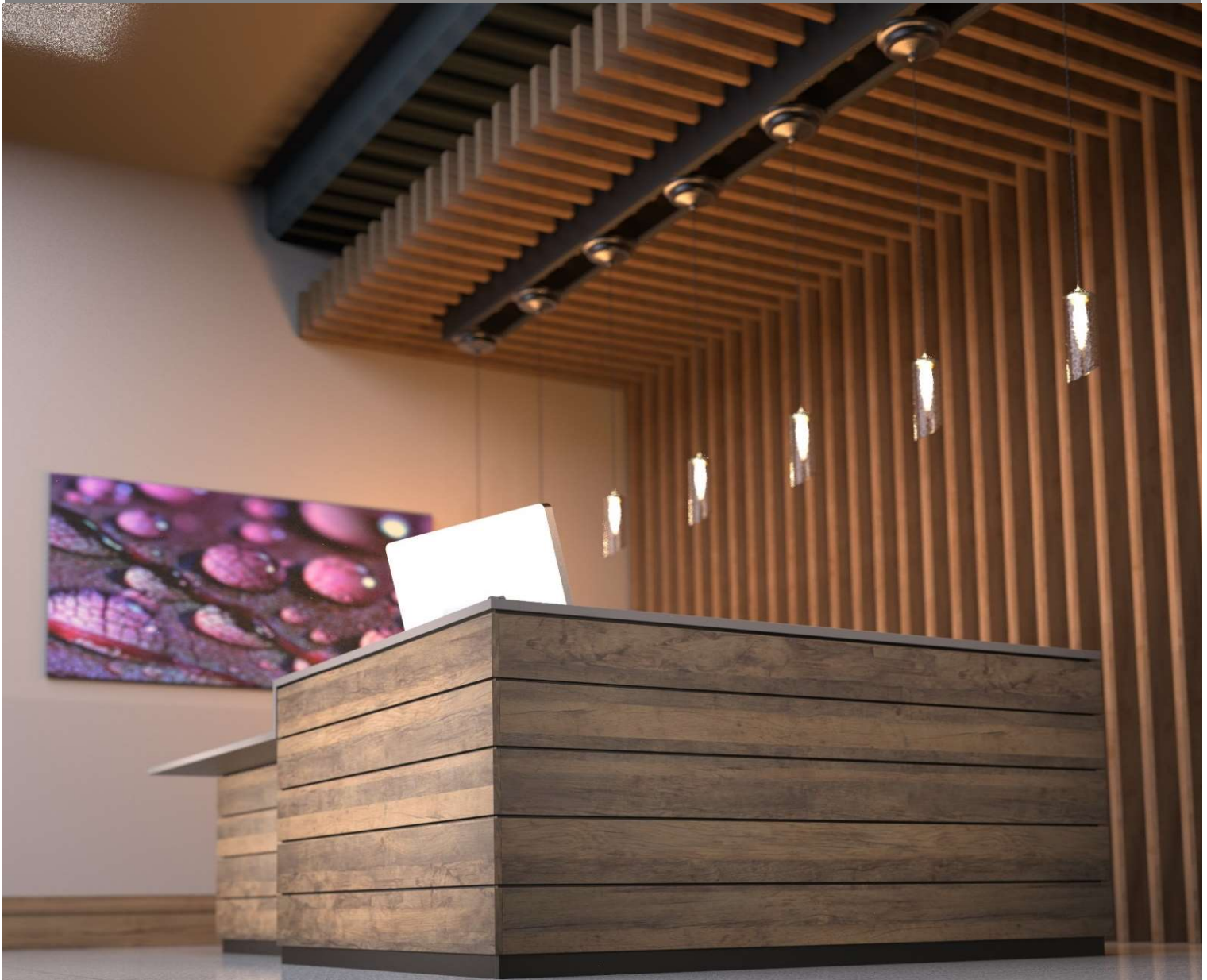
Bespoke Furniture

Approximately 3-6 weeks from receipt of order unless otherwise advised.



daron

The Souths Leading Manufacturer of
Office Furniture



Manufactured in the
United Kingdom